

# Made 2.0

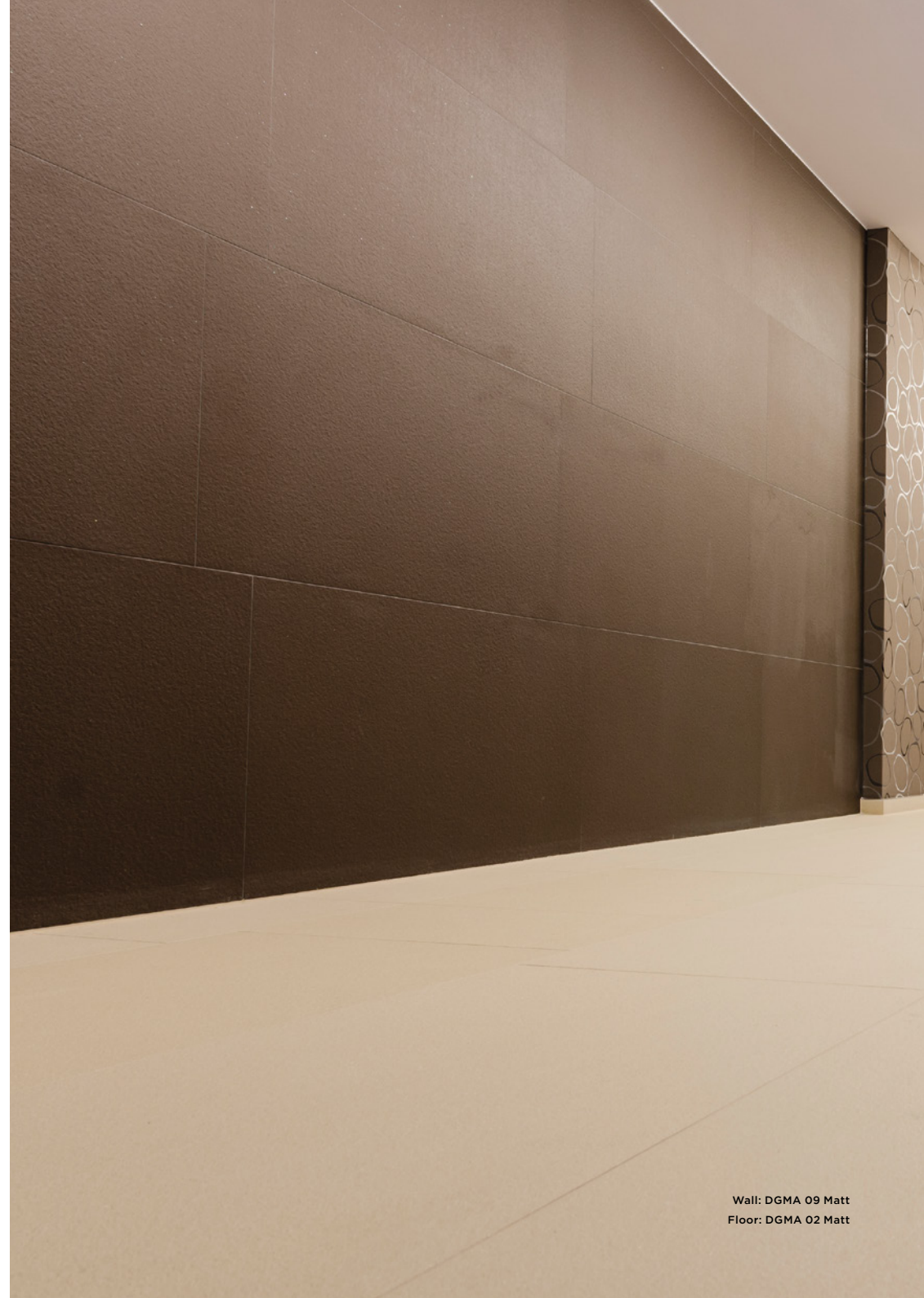
*Porcelain Minimal*



Floor: DGMA 02 Bush Hammered

11 Colours / 2 Finishes / 4 Sizes

Made 2.0 is a porcelain tile range with large-format sizes produced using the latest production technologies. In this range, stylish complementary organic tones are used to create excellent design variety and presence.



Wall: DGMA 09 Matt  
Floor: DGMA 02 Matt



Floor: DGMA 08 Matt

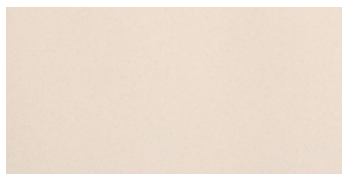


Floor: DGMA 03 Bush Hammered

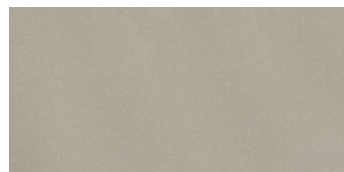




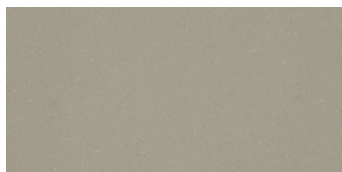
DGMA 01



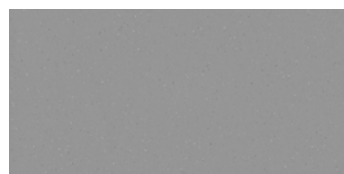
DGMA 02



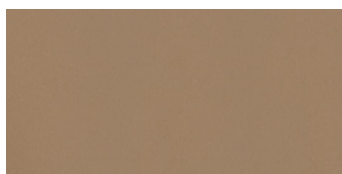
DGMA 03



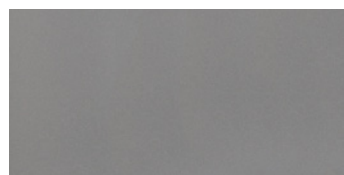
DGMA 05



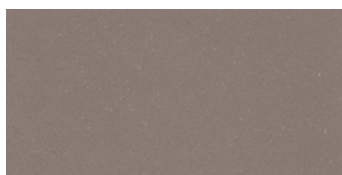
DGMA 11



DGMA 04



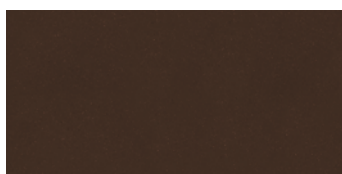
DGMA 06



DGMA 07



DGMA 08

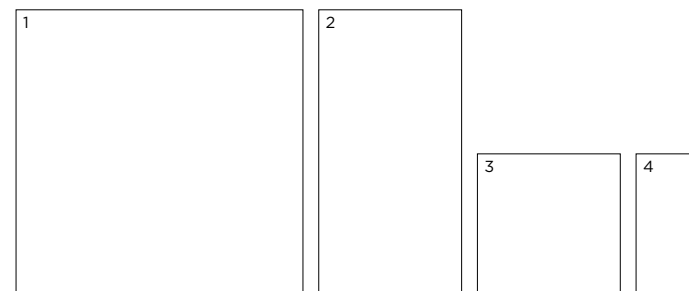


DGMA 09




DGMA 10

## Sizes



	Size (mm)	Thickness	Finish	Colour Availability
1	1190 x 1190 (R)	12	Matt	All colours
			Bush Hammered	All colours
2	1190 x 594 (R)	12	Matt	All colours
			Bush Hammered	All colours
3	594 x 594 (R)	12	Matt	All colours
			Bush Hammered	All colours
4	594 x 296 (R)	12	Matt	All colours
			Bush Hammered	All colours
	Skirting 594 x 71	12	Matt Bush Hammered	All colours All colours
	Gradino Costa Retta 1190 x 330 x 40	30	Matt Bush Hammered	All colours All colours
	Gradino Costa Retta 594 x 330 x 40	30	Matt Bush Hammered	All colours All colours

(R) Rectified size – square edge with bevel. Swatch colours may vary from original. Samples should be requested.

 V1 – Low  
Shade Variation

**DOMUS**

service@domusgroup.com | t: 020 8481 9500 | domusgroup.com

# Made 2.0

## Technical Data

**Product Type:** Unglazed Porcelain (BS EN 14411 – Group Bla)  
**Use:** Floors & Walls  
**Product Code:** DGMA

### DIMENSION & SURFACE QUALITY

Technical Characteristics	Industry Standards	Requirement	Actual Value
Length & width	BS EN ISO 10545-2	± 0.60% (max. ±2.0mm)	± 0.2%
Thickness	BS EN ISO 10545-2	± 5% (max. ±0.5mm)	± 3%
Edge straightness	BS EN ISO 10545-2	± 0.50% (max. ±1.5mm)	± 0.2%
Orthogonality (squareness)	BS EN ISO 10545-2	± 0.50% (max. ±2.0mm)	± 0.2%
Planarity (flatness)	BS EN ISO 10545-2	± 0.50% (max. ±2.0mm)	± 0.2%
Appearance	BS EN ISO 10545-2	> 95%	Conforms

### SLIP RESISTANCE

Technical Characteristics	Industry Standards	Requirement	Finish
Areas with footwear	BS EN ISO 10545-17 (DIN 51130)	R10 from 10° to 19° R11 from 19° to 27°	Matt Bush Hammered
Areas with bare feet	DIN 51097	C over 24°	Bush Hammered
Slip resistance Coefficient of friction	BS 7976-2	Test results upon request	

### PRODUCT QUALITY & DURABILITY

Technical Characteristics	Industry Standards	Requirement	Actual Value
Water absorption	BS EN ISO 10545-3	≤ 0.5%	≤ 0.1% (typical value)
Modulus of rupture (bending strength)	BS EN ISO 10545-4	≥ 35 N/mm <sup>2</sup>	≥ 40 N/mm <sup>2</sup> (typical value)
Breaking strength	BS EN ISO 10545-4	≥ 1300 N	≥ 4000 N (typical value)
Resistance to deep abrasion (of unglazed tiles)	BS EN ISO 10545-6	≤175mm <sup>3</sup>	≤145 mm <sup>3</sup> (typical value)
Linear thermal expansion coefficient	BS EN ISO 10545-8	Declared value	≤ 7 × 10 <sup>-6</sup> / °C <sup>-1</sup> (typical value)
Thermal shock resistance	BS EN ISO 10545-9	No visible defects	Resistant
Frost resistance	BS EN ISO 10545-12	No surface alteration	Resistant
Chemical resistance: Low concentrations of acids & alkalis	BS EN ISO 10545-13	No visible defects	ULA
High concentrations of acids & alkalis	BS EN ISO 10545-13	No visible defects	UHA
Domestic chemicals & additives for swimming pools	BS EN ISO 10545-13	UB min.	UA
Stain resistance	BS EN ISO 10545-14	Declared value	Class 5
Reaction to fire	Based on the decision 96/603/EC and its changes	A1 <sub>FL</sub> /A1	A1 <sub>FL</sub> /A1
Recycled content			41%

