

Reality Parquet

Engineered Laminate



10 Colours / 3 Finishes / 1 Size

Reality Parquet is an engineered laminate range that mixes modern and traditional into a unique eye-catcher that is 100% water resistant. Featuring the OmniLock click system for easy installation, this range is ideal for high-traffic areas.





Floor: ELRY 203 Herringbone Matt



Floor: ELRY 204 Herringbone Matt



ELRY 202



ELRY 204



ELRY 206



ELRY 205



ELRY 209



ELRY 203



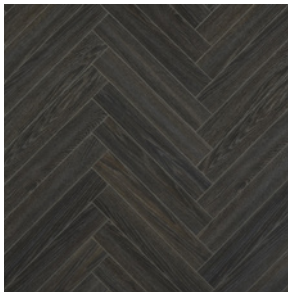
ELRY 207



ELRY 213



ELRY 214



ELRY 215

Sizes

1

	Size (mm)	Thickness	Finish	Colour Availability
1	84 x 504	8	Matt	ELRY 203, 204, 205, 206, 207, 209 & 215
			Extra Matt	ELRY 202 & 213
			Silk Matt	ELRY 214

Switch colours may vary from original. Samples should be requested. This product includes two types of parquet pieces: A and B, each clearly marked on the back and the package. For the herringbone pattern, both A and B parquet pieces are required.

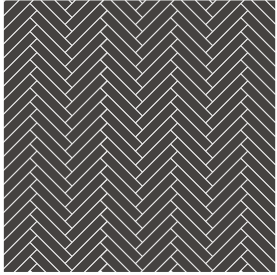
Specification

Format:	Parquet
Treatment:	Melamine resin
Texture:	Embossed
Technology:	Hydro+ water-resistance
Edge Detail:	4-way bevel
Durability:	Class 33 Class 23
Certification:	PEFC
Application:	Internal use only. Suitable with underfloor heating
Installation:	OmniLock click system Recommended for floated or bonded installation
Wet Warranty:	15 years (residential) 5 years (commercial)
Residential Warranty:	Lifetime
Commercial Warranty:	10 years

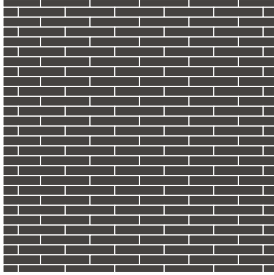


DOMUS

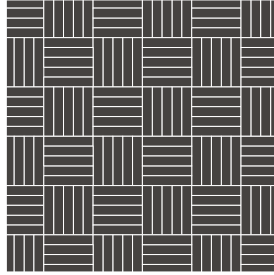
Layout Options



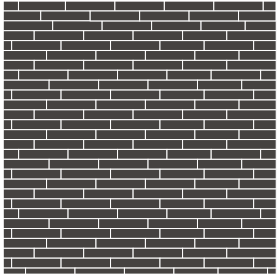
Single Herringbone



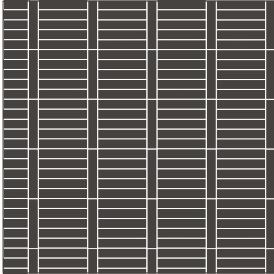
Brick



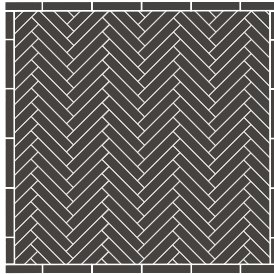
Square Basketweave



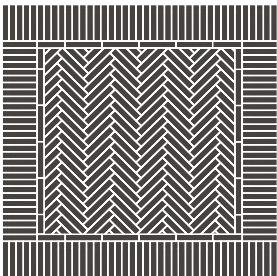
Floating



Ladder



Herringbone with Border



Herringbone with
Border & Frieze



Reality Parquet

Technical Data

Technical Data

Engineered Laminate

CLASSIFICATION & SAFETY PROPERTIES

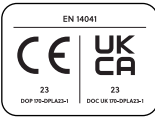
Technical Characteristics	Industry Standard	Performance
Abrasion resistance	EN 13329	AC5 (IP ≥ 6000)
Impact resistance	EN 13329	small ball : ≥ 70 mm - big ball : ≥ 1000 mm
Thickness swelling	ISO 24336	12% (requirement ≤ 15%)
Water resistance	ISO 4760	up to 24 hours
Fire resistance	EN 13501	Cfl-S1
Formaldehyde emission	EN 717-1	E1
Slip resistance	EN 13893	DS
Density	EN 323	900 kg/m ³
Resistance to staining	EN 438	5 (groups 1+2) ; 4 (group 3)
Effect of a furniture leg	EN 16581	no damage (foot type O)
Effect of a castor chair	EN 425	no damage with type W wheels
Thermal resistance in combination with underlay Excellene Plus	ISO 8302	0.08 m ² k/w - Suitable for floor heating/cooling
Level of use (domestic)	EN ISO 10874	Class 23 Heavy Residential
Level of use (commercial)	EN ISO 10874	Class 33 Heavy Commercial

Compatible with underfloor heating systems subject to K21 installation advice available on request.

All test results are based upon current test data provided by the manufacturer and are provided in good faith. Domus Group Limited cannot be held responsible for any variation in the test data due to changes in manufacture or material characteristics. Errors & omissions excepted. Please refer to Domus Group Limited Terms & Conditions of Sale, 10 December 2024 12:05 pm

Packaging

Boards per box	24
m ² per box	1.02m ²
m ² per pallet	48.77m ²
Weight per m ²	7.3kg
Weight per box	365kg



DOMUS

service@domuswood.com | t: 020 8481 9500 | domuswood.com