

Bits

Porcelain Minimal



9 Colours / 2 Finishes / 2 Sizes

Bits is a porcelain tile range that offers a vibrant palette of colours in a minimal aesthetic. The two finishes and modular size options help create spaces with beauty in simplicity and endless possibilities.





Back & Side Walls: DWBI 05 Matt & DWBI 05 Gloss
Front Wall: DWBI 03 Matt & DWBI 03 Gloss
Floor: DWBI 03 Matt & DWBI 05 Matt



Wall: DWBI 04 Matt, DWBI 05 Matt & DWBI 08 Matt

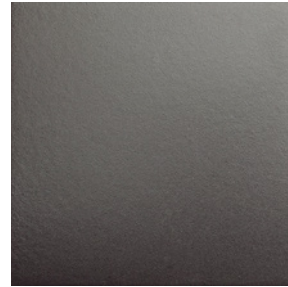
Sizes



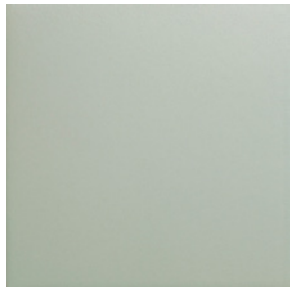
DWBI 01



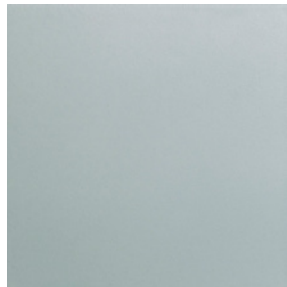
DWBI 02



DWBI 09



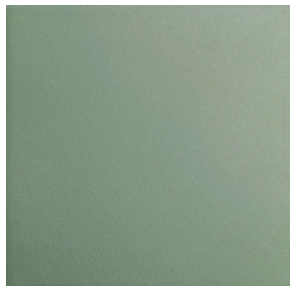
DWBI 04



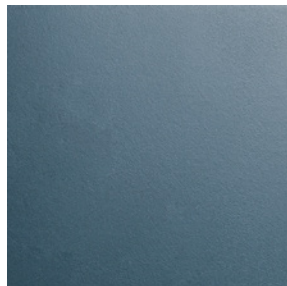
DWBI 03



DWBI 05



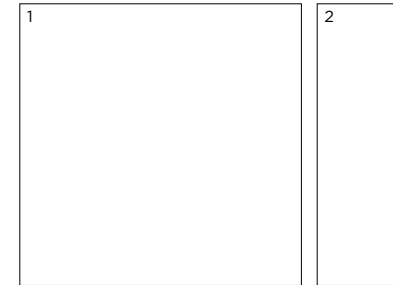
DWBI 07



DWBI 08



DWBI 06



	Size (mm)	Thickness	Finish	Colour Availability
1	115.5 x 115.5 (N)	8.5	Matt	All colours
			Gloss	All colours
2	115.5 x 37.2 (N)	8.5	Matt	All colours
			Gloss	All colours
	Edge 116 x 8	8.5	Matt Gloss	All colours All colours

(N) Nominal size – pressed edge. Swatch colours may vary from original. Samples should be requested.

Bits

Technical Data

Product Type: Glazed Porcelain (BS EN 14411 - Group Bla)

Use: Floors & Walls

Product Code: DWBI

DIMENSION & SURFACE QUALITY

Technical Characteristics	Industry Standards	Requirement (for nominal size N)		Actual Value
		70mm ≤ N < 150mm	N ≥ 150mm	
Length & width	BS EN ISO 10545-2	± 0.9mm	± 0.60% (max. ± 2.0mm)	Conforms
Thickness	BS EN ISO 10545-2	± 0.5mm	± 5% (max. ± 0.5mm)	Conforms
Edge straightness	BS EN ISO 10545-2	± 0.75mm	± 0.50% (max. ± 1.5mm)	Conforms
Orthogonality (squareness)	BS EN ISO 10545-2	± 0.75mm	± 0.50% (max. ± 2.0mm)	Conforms
Planarity (flatness)	BS EN ISO 10545-2	± 0.75mm	± 0.50% (max. ± 2.0mm)	Conforms
Appearance	BS EN ISO 10545-2	> 95%		Conforms

SLIP RESISTANCE

Technical Characteristics	Industry Standards	Requirement	Finish
Slip resistance (Pendulum) Coefficient of friction	BS EN 16165	Test results upon request	

PRODUCT QUALITY & DURABILITY

Technical Characteristics	Industry Standards	Requirement	Actual Value
Water absorption	BS EN ISO 10545-3	≤ 0.5%	Conforms
Modulus of rupture (bending strength)	BS EN ISO 10545-4	≥ 35 N/mm ²	Conforms
Breaking strength	BS EN ISO 10545-4	≥ 7.5mm ≥ 1300 N	Conforms
Resistance to surface abrasion (glazed tiles)	BS EN ISO 10545-7	PEI *see classifications below	PEI 2 - 06, 08 & 09 PEI 3 - 05 & 07 PEI 4 - 02, 03 & 04 PEI 5 - 01
Linear thermal expansion coefficient	BS EN ISO 10545-8	Declared value	< 9 x 10 ⁻⁶ / °C (Typical Value)
Crazing resistance	BS EN ISO 10545-11	No visible signs	Resistant
Frost resistance	BS EN ISO 10545-12	No surface alteration	Resistant
Chemical resistance: High concentrations of acids & alkalis	BS EN ISO 10545-13	No visible defects	GHA
Domestic chemicals & additives for swimming pools	BS EN ISO 10545-13	UB/GB min.	GA
Stain resistance	BS EN ISO 10545-14	Min. Class 3 - glazed	Class 3
Reaction to fire	Based on the decision 96/603/EC and its changes	A1 _{FL} /A1	A1 _{FL} /A1
Recycled content			47%

*PEI classifications

- PEI 1 - Very light traffic
- PEI 2 - Light traffic
- PEI 3 - Light to moderate traffic
- PEI 4 - Moderate to heavy traffic
- PEI 5 - Heavy to extra heavy traffic



All test results are based upon current test data provided by the manufacturer and are provided in good faith. Domus Group cannot be held responsible for any variation in the test data due to changes in manufacture or material characteristics. Errors & omissions excepted. Please refer to Domus Group Terms & Conditions of Sale. February 2025

DOMUS

service@domusgroup.com | t: 020 8481 9500 | domusgroup.com