

Bera & Beren Wall Slim

Lightweight Slabs / Ceramic Design



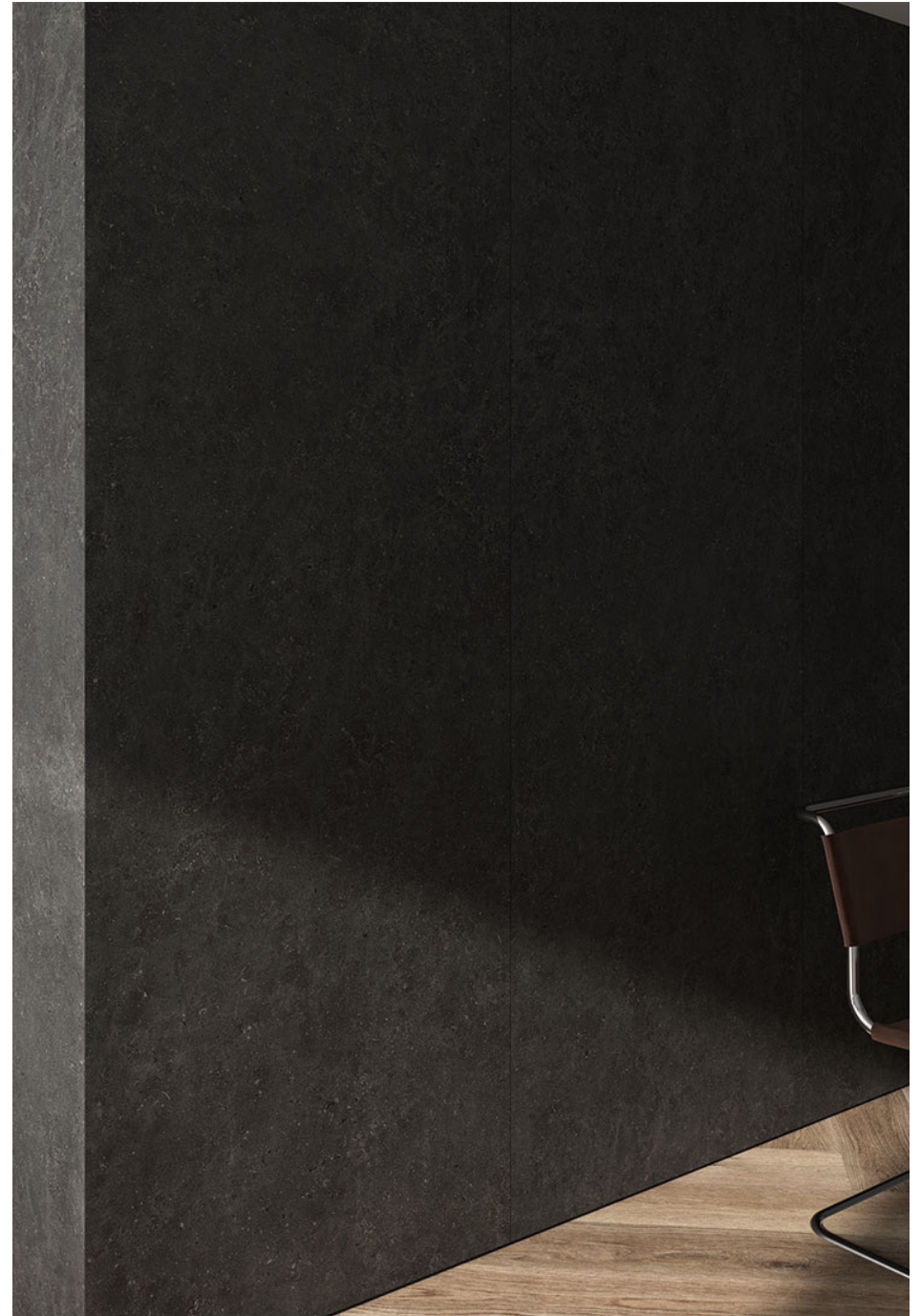
8 Colours / 2 Finishes / 2 Sizes

Bera & Beren Wall Slim is a highly versatile lightweight ceramic slab range for walls that utilises the ground-breaking Ductile® technology. Due to the high adaptability of the large-sized sheets, it is perfect for interior cladding. Easy to handle thanks to its 6mm thickness.





Wall: DLBWS 05 Natural



Wall: DLBWS 07 Natural

Sizes



DLBWS 08



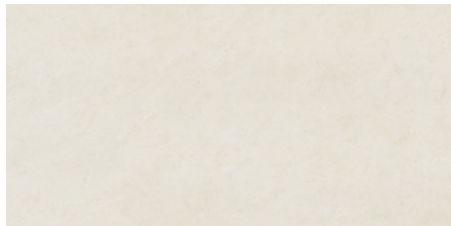
DLBWS 02



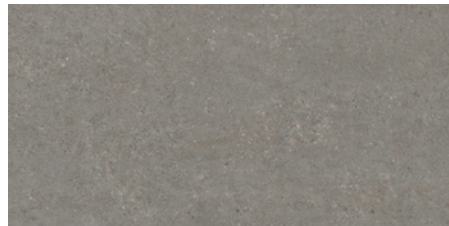
DLBWS 09



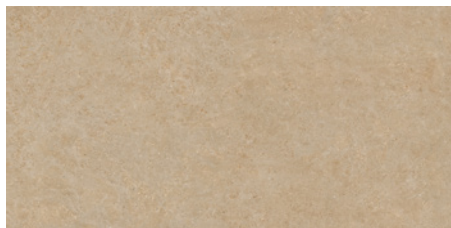
DLBWS 03



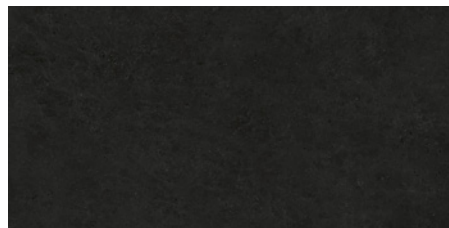
DLBWS 01



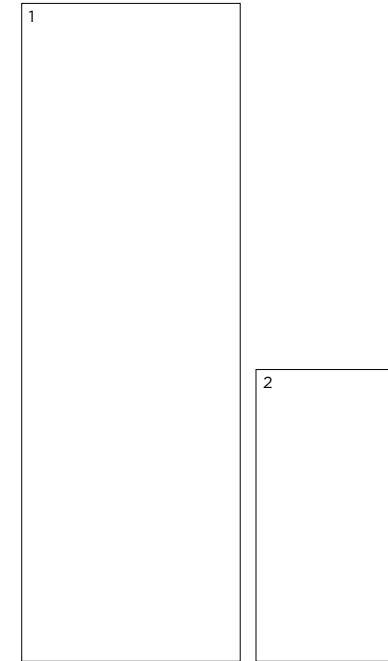
DLBWS 05



DLBWS 04



DLBWS 07

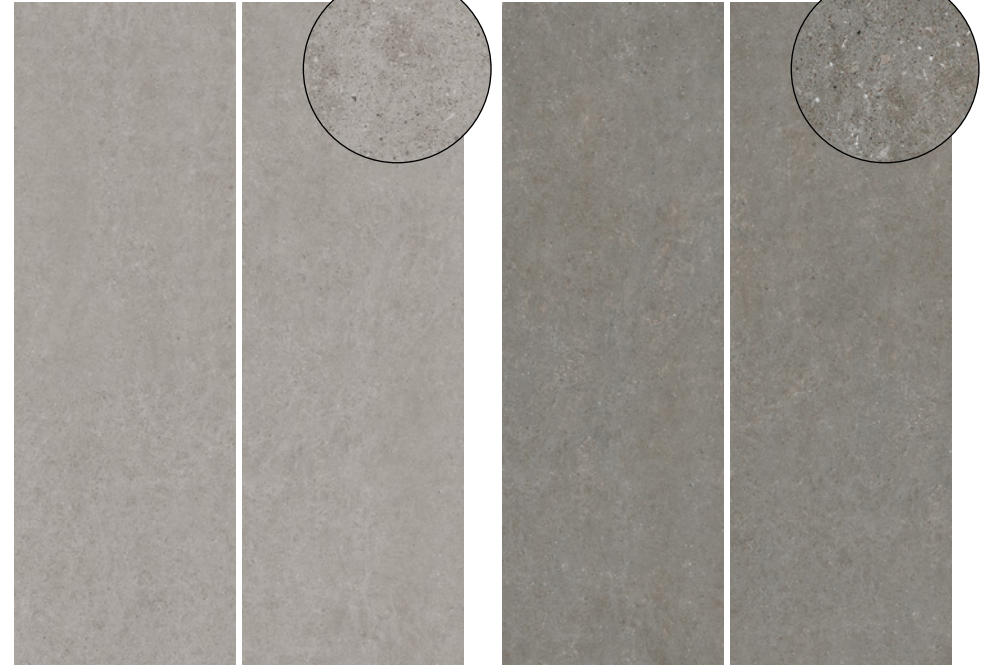


	Size (mm)	Thickness	Finish	Colour Availability
1	2698 x 898 (R)	6	Natural	All colours
2	1198 x 598 (R)	6	Soft Natural	All colours All colours

(R) Rectified size - squared edge with bevel. For use on internal walls only.
Swatch colours may vary from original. Samples should be requested.



DLBWS 01



DLBWS 03

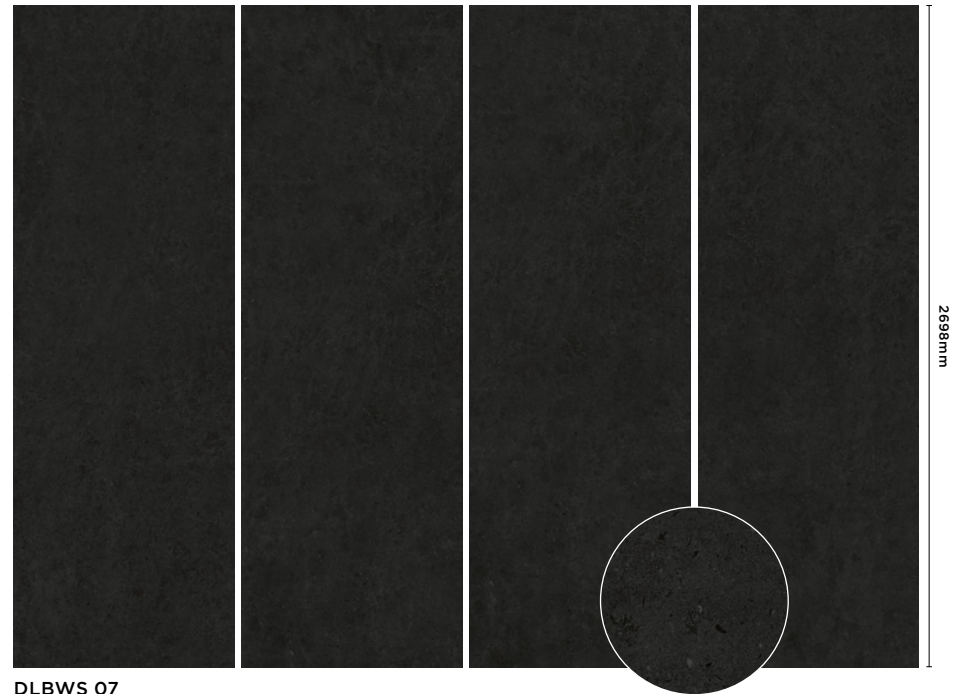
DLBWS 05

898mm



DLBWS 02

DLBWS 04



DLBWS 07

Bera & Beren Wall Slim

Technical Data

Product Type: Glazed Ceramic (BS EN 14411 – Group BIII)

Use: Walls (Internal only)

Product Code: DLBWS

DIMENSION & SURFACE QUALITY

Technical Characteristics	Industry Standards	Requirement	Actual Value
Length & width	BS EN ISO 10545-2	± 0.50% (max. ± 2.0mm)	Conforms
Thickness	BS EN ISO 10545-2	± 10% (max. ± 0.5mm)	Conforms
Edge straightness	BS EN ISO 10545-2	± 0.30% (max. ± 1.5mm)	Conforms
Orthogonality (squareness)	BS EN ISO 10545-2	± 0.50% (max. ± 2.0mm)	Conforms
Planarity (flatness): Centre curvature	BS EN ISO 10545-2	+ 0.5% (max. + 2.0mm) - 0.3% (max. - 1.5mm)	Conforms
Edge curvature	BS EN ISO 10545-2	+ 0.5% (max. + 2.0mm) - 0.3% (max. - 1.5mm)	Conforms
Warpage	BS EN ISO 10545-2	± 0.5% (max. ± 2.0mm)	Conforms
Appearance	BS EN ISO 10545-2	> 95%	Conforms

PRODUCT QUALITY & DURABILITY

Technical Characteristics	Industry Standards	Requirement	Actual Value
Water absorption	BS EN ISO 10545-3	> 10%	> 10% (typical value)
Modulus of rupture (bending strength)	BS EN ISO 10545-4	< 7.5mm thick ≥ 15 N/mm ²	>20 N/mm ² (typical value)
Breaking strength	BS EN ISO 10545-4	< 7.5mm thick ≥ 200 N	> 400N (typical value)
Thermal shock resistance	BS EN ISO 10545-9	No visible defects	Conforms
Crazing resistance	BS EN ISO 10545-11	No visible defects	Conforms
Chemical resistance: Low concentrations of acids & alkalis	BS EN ISO 10545-13	No visible defects	GLA
Domestic chemicals & additives for swimming pools	BS EN ISO 10545-13	GB min.	GA
Stain resistance	BS EN ISO 10545-14	Min. Class 3	Class 5
Reaction to fire	Based on the decision 96/603/EC and its changes	A1	A1
Recycled content			30%

All test results are based upon current test data provided by the manufacturer and are provided in good faith. Domus Group cannot be held responsible for any variation in the test data due to changes in manufacture or material characteristics. Errors & omissions excepted. Please refer to Domus Group Terms & Conditions of Sale. January 2023



DOMUS

service@domusgroup.com | t: 020 8481 9500 | domusgroup.com