

# Drammen

Porcelain Stone



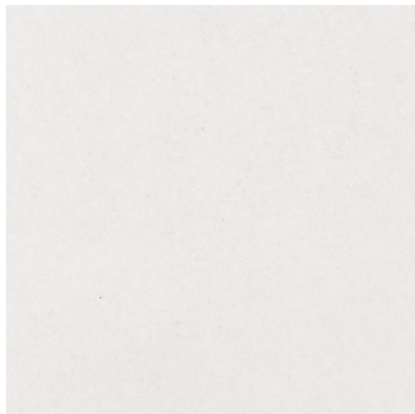
Floor: DADR 05 Natural Grip

5 Colours / 1 Finish / 4 Sizes

This elegant fine-grained classic limestone-effect porcelain tile range in soft neutral colours is a practical, high-performance product range with sizes up to 1200 x 600mm. A co-ordinating ceramic wall tile range, Drammen Wall, is available and features a chiselled stone-effect linear décor.



Floor: DADR 02 Natural Grip



DADR 01



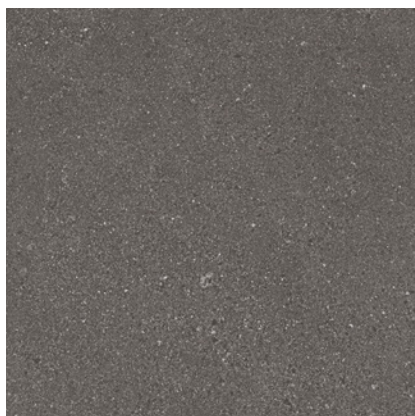
DADR 02



DADR 04

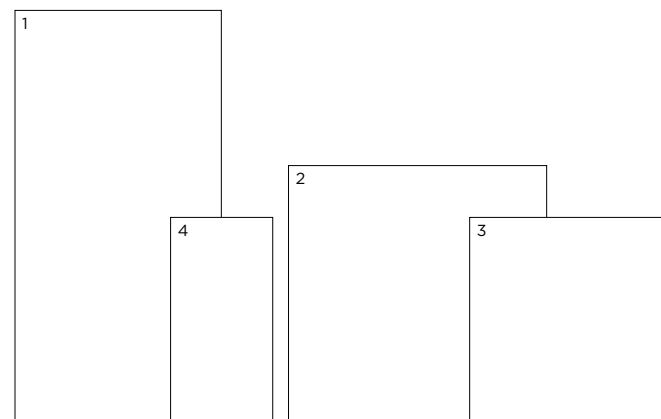


DADR 03



DADR 05

# Sizes



|   | Size (mm)      | Thickness | Finish       | Colour Availability |
|---|----------------|-----------|--------------|---------------------|
| 1 | 1200 x 600 (R) | 9         | Natural Grip | All colours         |
| 2 | 750 x 750 (R)  | 9         | Natural Grip | All colours         |
| 3 | 600 x 600 (R)  | 9         | Natural Grip | All colours         |
| 4 | 600 x 298 (R)  | 9         | Natural Grip | All colours         |

(R) Rectified size - square edge with bevel.  
 Swatch colours may vary from original. Samples should be requested.

# Drammen

## Technical Data

**Product Type: Glazed Porcelain (BS EN 14411 - Group Bla)**

**Use: Floors & Walls**

**Product Code: DADR**

### DIMENSION & SURFACE QUALITY

| Technical Characteristics  | Industry Standards | Requirement            | Actual Value |
|----------------------------|--------------------|------------------------|--------------|
| Length & width             | BS EN ISO 10545-2  | ± 0.60% (max. ± 2.0mm) | Conforms     |
| Thickness                  | BS EN ISO 10545-2  | ± 5% (max. ± 0.5mm)    | Conforms     |
| Edge straightness          | BS EN ISO 10545-2  | ± 0.50% (max. ± 1.5mm) | Conforms     |
| Orthogonality (squareness) | BS EN ISO 10545-2  | ± 0.50% (max. ± 2.0mm) | Conforms     |
| Planarity (flatness)       | BS EN ISO 10545-2  | ± 0.50% (max. ± 2.0mm) | Conforms     |
| Appearance                 | BS EN ISO 10545-2  | > 95%                  | Conforms     |

### SLIP RESISTANCE

| Technical Characteristics                  | Industry Standards             | Requirement               | Finish       |
|--|--------------------------------|---------------------------|--------------|
| Areas with footwear                        | BS EN ISO 10545-17 (DIN 51130) | R10 from 10° to 19°       | Natural Grip |
| Areas with bare feet                       | DIN 51097                      | C over 24°                | Natural Grip |
| Slip resistance<br>Coefficient of friction | BS 7976-2                      | Test results upon request |              |

### PRODUCT QUALITY & DURABILITY

| Technical Characteristics                                     | Industry Standards                              | Requirement                       | Actual Value   |
|---|---|-----------------------------------|--|
| Water absorption  | BS EN ISO 10545-3                               | ≤ 0.5%                            | Conforms   |
| Modulus of rupture (bending strength)                         | BS EN ISO 10545-4                               | ≥ 35 N/mm <sup>2</sup>            | Conforms   |
| Breaking strength   | BS EN ISO 10545-4                               | ≥ 1300 N                          | Conforms   |
| Resistance to surface abrasion (glazed tiles)                 | BS EN ISO 10545-7                               | PEI<br>*see classifications below | Class 4 - DADR 01 & 02<br>Class 3 - DADR 03, 04 & 05 |
| Thermal shock resistance                                      | BS EN ISO 10545-9                               | No visible defects                | Resistant  |
| Crazing resistance  | BS EN ISO 10545-11                              | No visible signs                  | Resistant  |
| Frost resistance  | BS EN ISO 10545-12                              | No surface alteration             | Resistant  |
| Chemical resistance:<br>Low concentrations of acids & alkalis | BS EN ISO 10545-13                              | No visible defects                | GLB  |
| High concentrations of acids & alkalis                        | BS EN ISO 10545-13                              | No visible defects                | GHB  |
| Domestic chemicals & additives for swimming pools             | BS EN ISO 10545-13                              | GB min.                           | GB   |
| Stain resistance  | BS EN ISO 10545-14                              | Min. Class 3                      | Conforms   |
| Reaction to fire  | Based on the decision 96/603/EC and its changes | A <sub>1FL</sub> /A1              | A <sub>1FL</sub> /A1                                 |
| Recycled content  |   |                                   | 16%  |

#### \*PEI classifications

PEI 2 - Light traffic  
PEI 3 - Light to moderate traffic  
PEI 4 - Moderate to heavy traffic  
PEI 5 - Heavy to extra heavy traffic

All test results are based upon current test data provided by the manufacturer and are provided in good faith. Domus Group cannot be held responsible for any variation in the test data due to changes in manufacture or material characteristics. Errors & omissions excepted. Please refer to Domus Group Terms & Conditions of Sale. November 2019



**DOMUS**

service@domusgroup.com | t: 020 8481 9500 | domusgroup.com