

Earth 1.0

Porcelain Minimal



Wall & Floor: DKER 07 Natural Grip

8 Colours / 1 Finish / 2 Sizes

Earth 1.0 is a contemporary porcelain range with a minimal aesthetic of cool and warm colours carefully designed to coordinate and complement each other. Suitable for wall and floor applications in budget-conscious projects. This range is easy to clean and maintain, and designed to provide high levels of slip performance in wet and dry areas.



Wall: DKER 01 Natural Grip
Floor: DKER 04 Natural Grip



Wall & Floor: DKER 03 Natural Grip



Wall: DKER 05 Natural Grip
Floor: DKER 08 Natural Grip



DKER 01



DKER 05



DKER 02



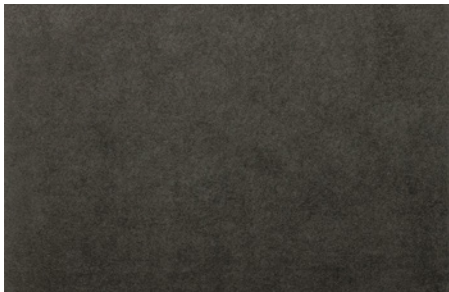
DKER 06



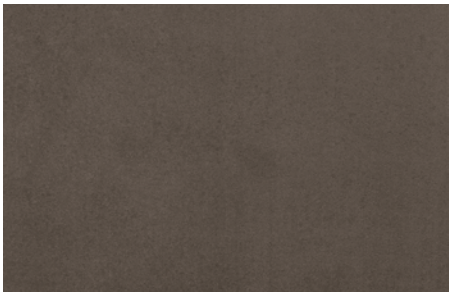
DKER 03



DKER 07

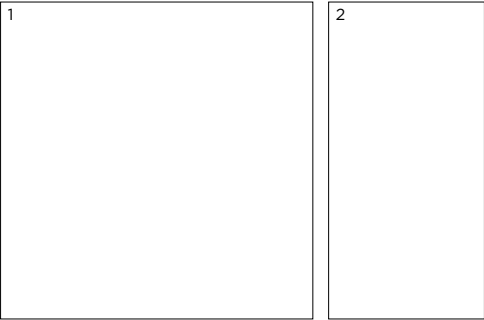


DKER 04




DKER 08

Sizes



	Size (mm)	Thickness	Finish	Colour Availability
1	600 x 600 (R)	9.5	Natural Grip	All colours
2	600 x 300 (R)	8.5	Natural Grip	All colours

(R) Rectified size - square edge with bevel.
Swatch colours may vary from original. Samples should be requested.

 V2 - Moderate
Shade Variation

DOMUS

service@domusgroup.com | t: 020 8481 9500 | domusgroup.com

Earth 1.0

Technical Data

Product Type: Glazed Porcelain (BS EN 14411 – Group Bla)
Use: Floors & Walls
Product Code: DKER

DIMENSION & SURFACE QUALITY

Technical Characteristics	Industry Standards	Requirement	Actual Value
Length & width	BS EN ISO 10545-2	± 0.60% (max. ± 2.0mm)	± 0.2%
Thickness	BS EN ISO 10545-2	± 5% (max. ± 0.5mm)	Conforms
Edge straightness	BS EN ISO 10545-2	± 0.50% (max. ± 1.5mm)	Conforms
Orthogonality (squareness)	BS EN ISO 10545-2	± 0.50% (max. ± 2.0mm)	Conforms
Planarity (flatness)	BS EN ISO 10545-2	± 0.50% (max. ± 2.0mm)	Conforms
Appearance	BS EN ISO 10545-2	> 95%	Conforms

SLIP RESISTANCE

Technical Characteristics	Industry Standards	
Slip resistance (Pendulum) Coefficient of friction	BS EN 16165	Exceeds PTV +36 Shod & Bare Foot

PRODUCT QUALITY & DURABILITY

Technical Characteristics	Industry Standards	Requirement	Actual Value
Water absorption	BS EN ISO 10545-3	≤ 0.5%	0.05% (Typical value)
Modulus of rupture (bending strength)	BS EN ISO 10545-4	≥ 35 N/mm²	55 N/mm² (Typical value)
Breaking strength	BS EN ISO 10545-4	≥ 1300 N	2461 N (Typical value)
Resistance to surface abrasion	BS EN ISO 10545-7	PEI *see classifications below	Class 4
Thermal shock resistance	BS EN ISO 10545-9	No visible defects	Resistant
Crazing resistance	BS EN ISO 10545-11	No visible signs	Resistant
Frost resistance	BS EN ISO 10545-12	No surface alteration	Resistant
Chemical resistance: Low concentrations of acids & alkalis	BS EN ISO 10545-13	No visible defects	GLA
Domestic chemicals & additives for swimming pools	BS EN ISO 10545-13	GB min.	GA
Stain resistance	BS EN ISO 10545-14	Min. Class 3	Class 5
Reaction to fire	Based on the decision 96/603/CE and its changes	A1/A1 _{FL}	A1/A1 _{FL}
Recycled content			5%

*PEI classifications
PEI 2 - Light traffic
PEI 3 - Light to moderate traffic
PEI 4 - Moderate to heavy traffic
PEI 5 - Heavy to extra heavy traffic



All test results are based upon current test data provided by the manufacturer and are provided in good faith. Domus Group cannot be held responsible for any variation in the test data due to changes in manufacture or material characteristics. Errors & omissions excepted. Please refer to Domus Group Terms & Conditions of Sale. September 2024