

Stone Life

Porcelain Stone



4 Colours / **2** Finishes / **3** Sizes

Loosely inspired by Burgundy limestone, Stone Life's versatile surface forms the perfect backdrop for settings with a free, contemporary flavour. This porcelain tile range is part of Florim's 'CarbonZero' selection of Climate-Positive surfaces, which reduce the amount of CO₂ in the atmosphere.



Sizes



DCSLF 01



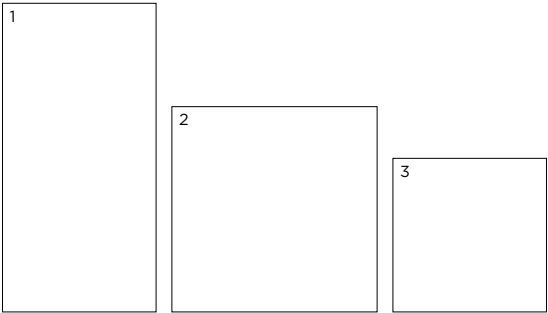
DCSLF 02



DCSLF 03



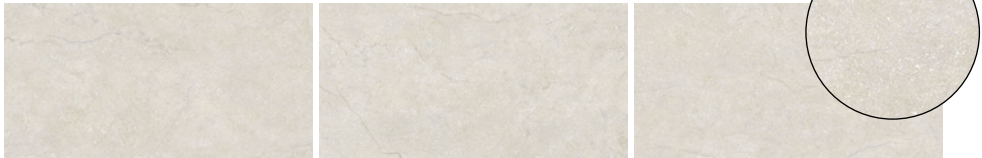
DCSLF 04



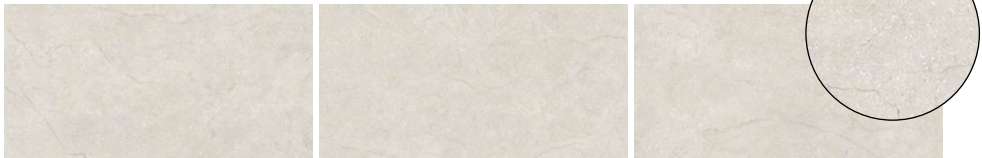
	Size (mm)	Thickness	Finish	Colour Availability
1	1197 x 597 (R)	9	Matt Grip	All colours All colours
2	797 x 797 (R)	9	Matt	All colours
3	597 x 597 (R)	9	Matt	All colours
	Plinth Skirting 1197 x 46	9	Matt	All colours
	Step Tread 1197 x 330	9	Matt Grip	All colours All colours

(R) Rectified size – square edge with bevel. Swatch colours may vary from original. Samples should be requested.

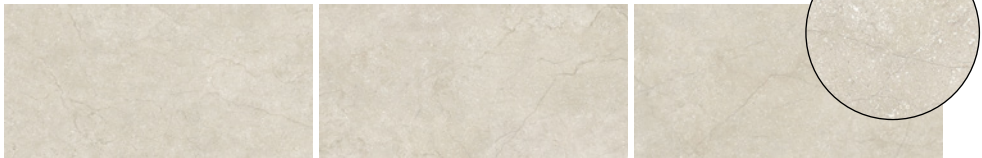
V3 - High Shade Variation



DCSLF 01 Matt



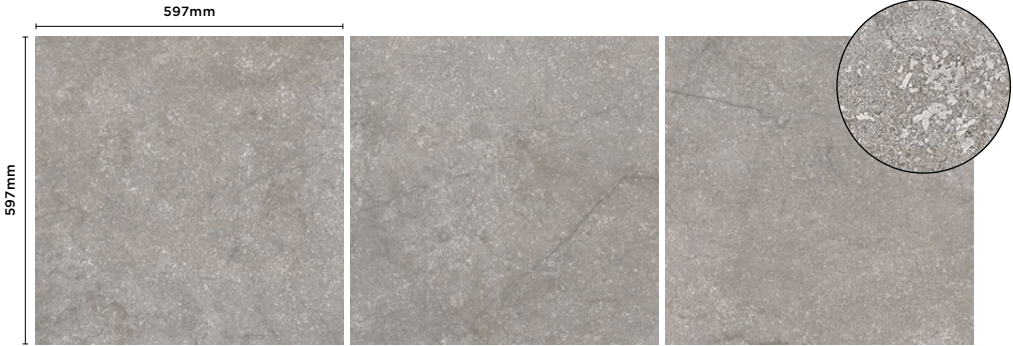
DCSLF 01 Grip



DCSLF 02 Grip



DCSLF 02 Matt



DCSLF 03 Matt



DCSLF 04 Matt

Stone Life

Technical Data

Product Type: Glazed Porcelain (BS EN 14411 – Group Bla)

Use: Floors & Walls

Product Code: DCSLF

DIMENSION & SURFACE QUALITY

Technical Characteristics	Industry Standards	Requirement	Actual Value
Length & width	BS EN ISO 10545-2	± 0.60% (max. ± 2.0mm)	Conforms
Thickness	BS EN ISO 10545-2	± 5% (max. ± 0.5mm)	Conforms
Edge straightness	BS EN ISO 10545-2	± 0.50% (max. ± 1.5mm)	Conforms
Orthogonality (squareness)	BS EN ISO 10545-2	± 0.50% (max. ± 2.0mm)	Conforms
Planarity (flatness)	BS EN ISO 10545-2	± 0.50% (max. ± 2.0mm)	Conforms
Appearance	BS EN ISO 10545-2	> 95%	Conforms

SLIP RESISTANCE

Technical Characteristics	Industry Standards	Requirement	Finish
Areas with footwear	BS EN 16165 Annex B	R10 from 10° to 19° R11 from 19° to 27°	Matt Grip
Slip resistance (Pendulum) Coefficient of friction	BS EN 16165	Test results upon request	

PRODUCT QUALITY & DURABILITY

Technical Characteristics	Industry Standards	Requirement	Actual Value
Water absorption	BS EN ISO 10545-3	≤ 0.5%	0.08% (Average Value)
Modulus of rupture (bending strength)	BS EN ISO 10545-4	≥ 35 N/mm²	50 N/mm² (Average Value)
Breaking strength	BS EN ISO 10545-4	≥ 7.5mm ≥ 1300 N	2200 N (Average Value)
Resistance to surface abrasion (glazed tiles)	BS EN ISO 10545-7	PEI *see classifications below	Class 2 – DCSLF 04 Class 4 – DCSLF 01, 02 & 03
Thermal shock resistance	BS EN ISO 10545-9	No visible defects	Resistant
Crazing resistance	BS EN ISO 10545-11	No visible signs	Resistant
Frost resistance	BS EN ISO 10545-12	No surface alteration	Resistant
Chemical resistance: Low concentrations of acids & alkalis	BS EN ISO 10545-13	No visible defects	GLA
Domestic chemicals & additives for swimming pools	BS EN ISO 10545-13	UB/GB min.	GA
Stain resistance	BS EN ISO 10545-14	Min. Class 3 – glazed	Class 4-5
Reaction to fire	Based on the decision 96/603/EC and its changes	A1 _{FL} /A1	A1 _{FL} /A1
Recycled content			22.5%

***PEI classifications**
PEI 1 – Very light traffic
PEI 2 - Light traffic
PEI 3 - Light to moderate traffic
PEI 4 - Moderate to heavy traffic
PEI 5 - Heavy to extra heavy traffic



All test results are based upon current test data provided by the manufacturer and are provided in good faith. Domus Group cannot be held responsible for any variation in the test data due to changes in manufacture or material characteristics. Errors & omissions excepted. Please refer to Domus Group Terms & Conditions of Sale.
April 2025