

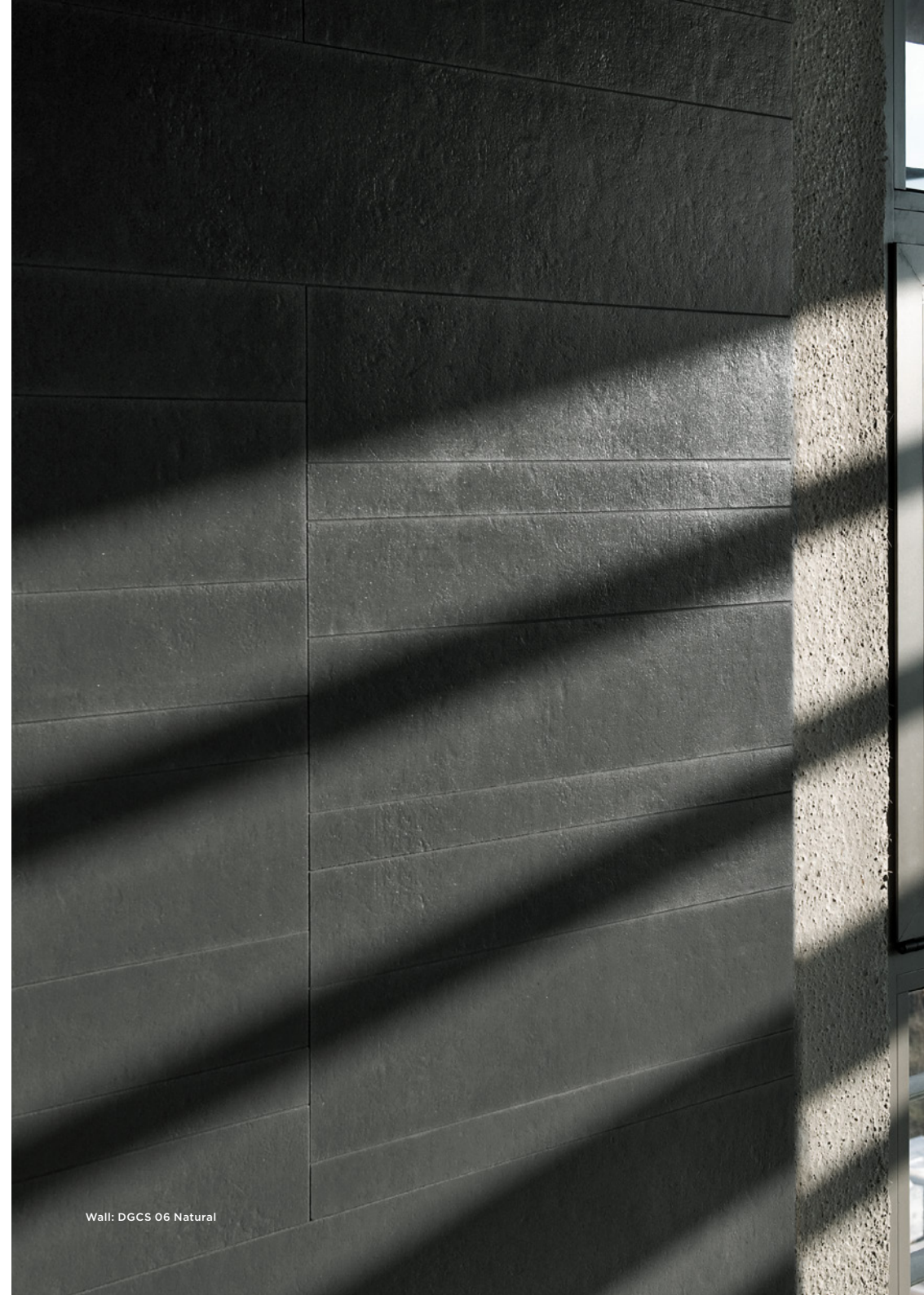
Creta Wall Slim

Lightweight Slabs / Porcelain Concrete



11 Colours / 1 Finish / 12 Sizes & 1 Mix of 3 Sizes / 4 Mosaics

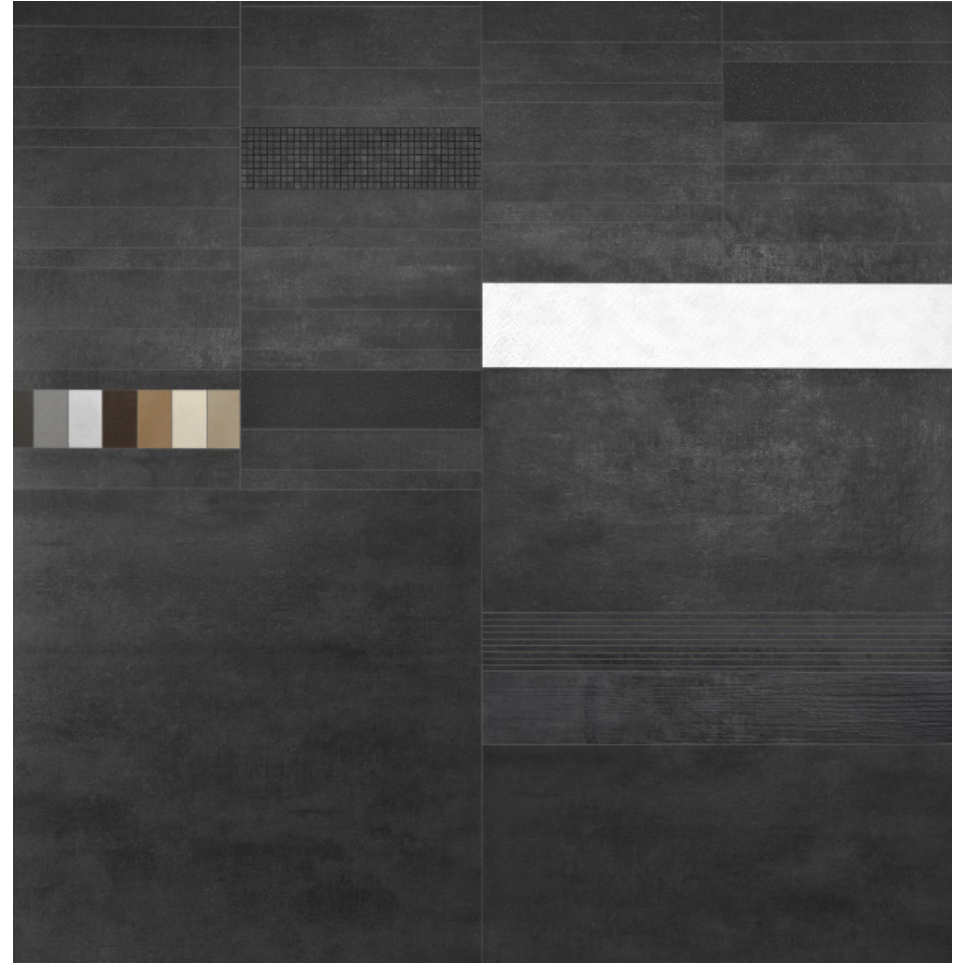
Creta Wall Slim is a concrete-effect porcelain range consisting of 4.8mm-thick lightweight slabs. This range offers a palette of contemporary cementitious colours to help create a modern industrial look. Its subtle shading and uniform appearance make it ideal for minimal interior styling.



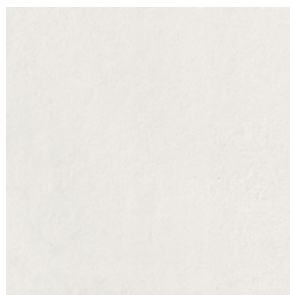
Wall: DGCS 06 Natural



Wall: DGCS 04 Natural



Wall: DGCS 05, DGCS 05 Mosaic & DGCS 05 Stripes Mosaic Natural



DGCS 07



DGCS 09



DGCS 03



DGCS 01



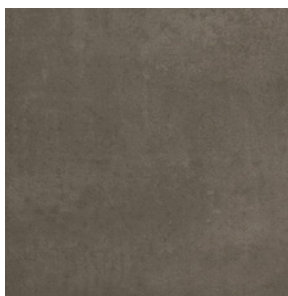
DGCS 08



DGCS 02



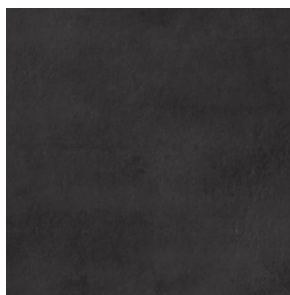
DGCS 11



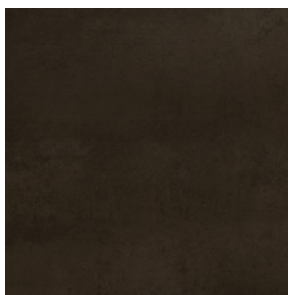
DGCS 10



DGCS 06

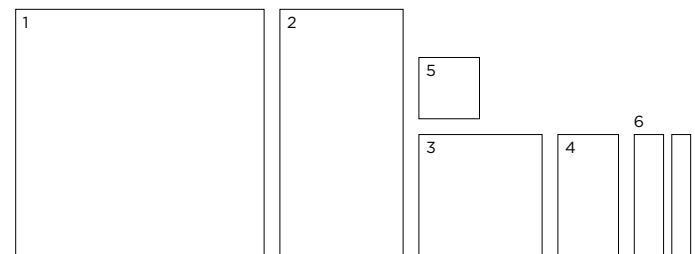


DGCS 05



DGCS 04

Sizes



	Size (mm)	Thickness	Finish	Colour Availability
1	1190 x 1190 (R)	4.8	Natural	All colours
2	1190 x 594 (R)	4.8	Natural	All colours
3	594 x 594 (R)	4.8	Natural	All colours
4	594 x 296 (R)	4.8	Natural	All colours
5	296 x 296 (R)	4.8	Natural	All colours
6	Blend (3 sizes in 1 box) 594 x 147 (R) 594 x 97.33 (R) 594 x 47.67 (R)	4.8	Natural	All colours
	Plinth Skirting 1190 x 71	4.8	Natural	All colours

(R) Rectified size - square edge with bevel. Swatch colours may vary from original. Samples should be requested. More sizes shown on next page.

V1 - Low
Shade Variation

DOMUS

service@domusgroup.com | t: 020 8481 9500 | domusgroup.com

Pentagon



DGCS 01



DGCS 02

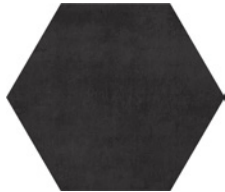


DGCS 03

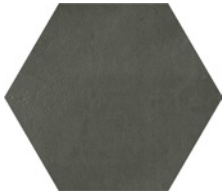


DGCS 04

Large Hexagon



DGCS 05

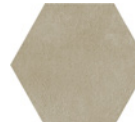


DGCS 06

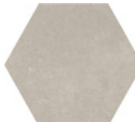
Small Hexagon



DGCS 07



DGCS 08



DGCS 09

Diamond



DGCS 10



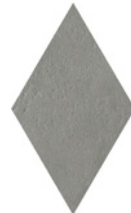
DGCS 11



DGCS 01



DGCS 02

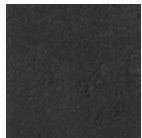


DGCS 03

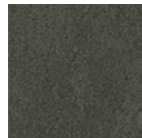


DGCS 04

Small

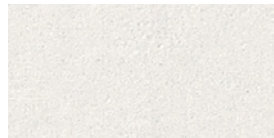


DGCS 05



DGCS 06

Brick

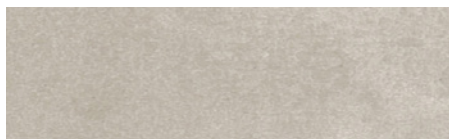


DGCS 07

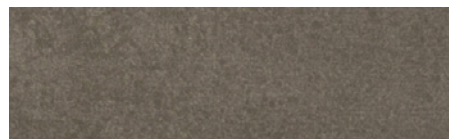


DGCS 08

Plate

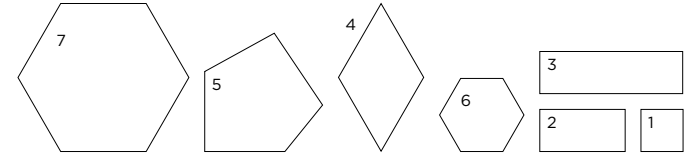


DGCS 09



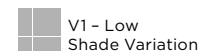
DGCS 10

More Sizes



	Size (mm)	Thickness	Finish	Colour Availability
1	Small 87.5 x 87.5 (R)	4.8	Natural	All colours
2	Brick 177 x 87.5 (R)	4.8	Natural	All colours
3	Plate 296 x 87.5 (R)	4.8	Natural	All colours
4	Diamond 306 x 177 (R)	4.8	Natural	All colours
5	Pentagon 166.2 x 96.5 (R)	4.8	Natural	All colours
6	Small Hexagon 177 x 153 (R)	4.8	Natural	All colours
7	Large Hexagon 354 x 306 (R)	4.8	Natural	All colours

(R) Rectified size - square edge with bevel. Swatch colours may vary from original. Samples should be requested. Mosaics shown on next page.



Stripes Mosaic 1200 x 15mm



DCGS 01



DCGS 02

Stripes Mosaic 600 x 15mm

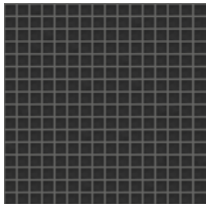


DGCS 03

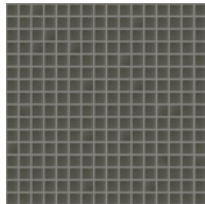


DGCS 04

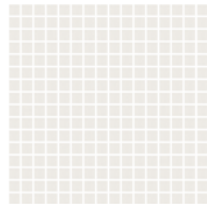
Mosaic 15 x 15mm



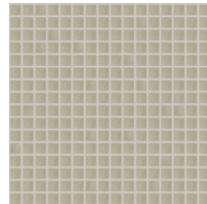
DGCS 05



DGCS 06

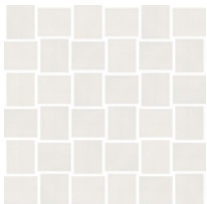


DGCS 07



DGCS 08

Action Mosaic 51 x 43mm



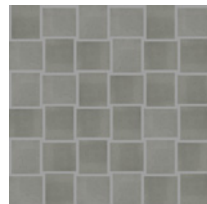
DGCS 07



DGCS 01

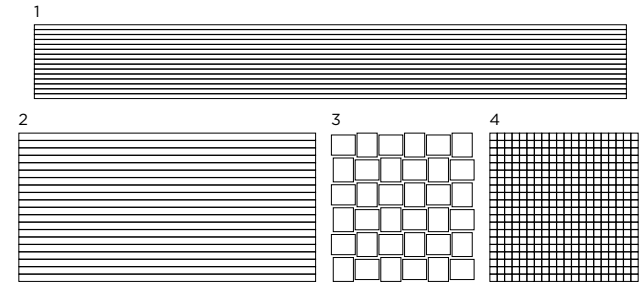


DGCS 08



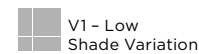
DGCS 03

Mosaics



	Size (mm)	Thickness	Finish	Colour Availability
1	Stripes Mosaic 1200 x 15 on 1200 x 150 sheet	4.8	Natural	All colours
2	Stripes Mosaic 600 x 15 on 600 x 300 sheet	4.8	Natural	All colours
3	Action Mosaic 51 x 43 on 300 x 300 sheet	4.8	Natural	DGCS 01, 03, 05, 07 & 08
4	Mosaic 15 x 15 on 300 x 300 sheet	4.8	Natural	All colours

Swatch colours may vary from original. Samples should be requested.



Creta Wall Slim

Technical Data

Product Type: Unglazed Porcelain (BS EN 14411 – Group Bla)

Use: Floors & Walls

Product Code: DGCS / DGZL

DIMENSION & SURFACE QUALITY

Technical Characteristics	Industry Standards	Requirement	Actual Value
Length & width	BS EN ISO 10545-2	± 0.60% (max. ± 2.0mm)	± 0.2%
Thickness	BS EN ISO 10545-2	± 5% (max. ± 0.5mm)	± 3%
Edge straightness	BS EN ISO 10545-2	± 0.50% (max. ± 1.5mm)	± 0.2%
Orthogonality (squareness)	BS EN ISO 10545-2	± 0.50% (max. ± 2.0mm)	± 0.2%
Planarity (flatness)	BS EN ISO 10545-2	± 0.50% (max. ± 2.0mm)	± 0.2%
Appearance	BS EN ISO 10545-2	> 95%	Conforms

SLIP RESISTANCE

Technical Characteristics	Industry Standards	Requirement	Finish
Areas with footwear	BS EN ISO 10545-17 (DIN 51130)	R10 from 10° to 19°	Natural
Slip resistance Coefficient of friction	BS 7976-2	Test results upon request	

PRODUCT QUALITY & DURABILITY

Technical Characteristics	Industry Standards	Requirement	Actual Value
Water absorption	BS EN ISO 10545-3	≤ 0.5%	≤ 0.1% (Typical value)
Modulus of rupture (bending strength)	BS EN ISO 10545-4	≥ 35 N/mm ²	≥ 40 N/mm ² (Typical value)
Breaking strength	BS EN ISO 10545-4	≥ 700 N	Conforms
Resistance to deep abrasion (unglazed tiles)	BS EN ISO 10545-6	≤ 175mm ³	≤ 145 mm ³ (Typical value)
Linear thermal expansion coefficient	BS EN ISO 10545-8	Declared value	≤ 7x10 ⁻⁶ / °C ⁻¹ (Typical value)
Thermal shock resistance	BS EN ISO 10545-9	No visible defects	Resistant
Frost resistance	BS EN ISO 10545-12	No surface alteration	Resistant
Chemical resistance: Low concentrations of acids & alkalis	BS EN ISO 10545-13	No visible defects	ULA
High concentrations of acids & alkalis	BS EN ISO 10545-13	No visible defects	UHA
Domestic chemicals & additives for swimming pools	BS EN ISO 10545-13	UB min.	UA
Stain resistance	BS EN ISO 10545-14	Declared value	Class 5
Reaction to fire	Based on the decision 96/603/EC and its changes	A1 _{FL} /A1	A1 _{FL} /A1
Recycled content			4%

All test results are based upon current test data provided by the manufacturer and are provided in good faith. Domus Group cannot be held responsible for any variation in the test data due to changes in manufacture or material characteristics. Errors & omissions excepted. Please refer to Domus Group Terms & Conditions of Sale. July 2019



DOMUS

service@domusgroup.com | t: 020 8481 9500 | domusgroup.com