

Mater

Porcelain Design



Floor: DMATRS 03 Glazed

8 Colours / 2 Finishes / 3 Sizes

Mater (matter in Italian) is a porcelain tile range with an innovative glazing technique which creates a tactile effect with stunning visual impact. Mater is suitable for residential and commercial spaces, indoor and outdoor.

Design Patricia Urquiola

Mutina



Wall: DMATR 01 Matt
Floor & Stairs: DMATRS 01 Glazed



Wall: DMATRS 05 Glazed
Floor: DMATR 02 Matt



Wall & Floor: DMATRS 02 Glazed



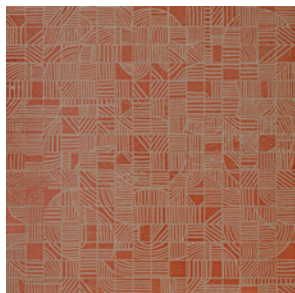
DMATR 01



DMATR 02



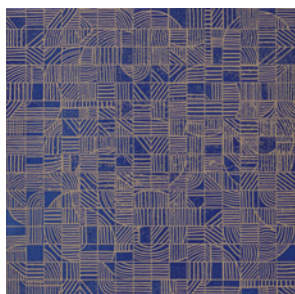
DMATRS 01



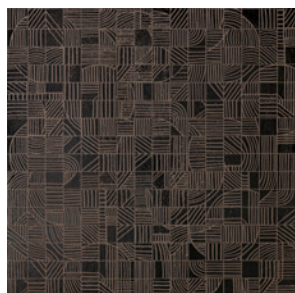
DMATRS 02



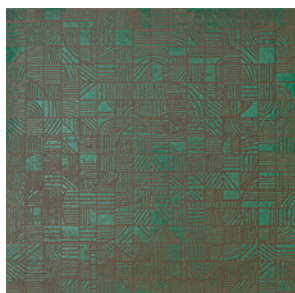
DMATRS 04



DMATRS 03

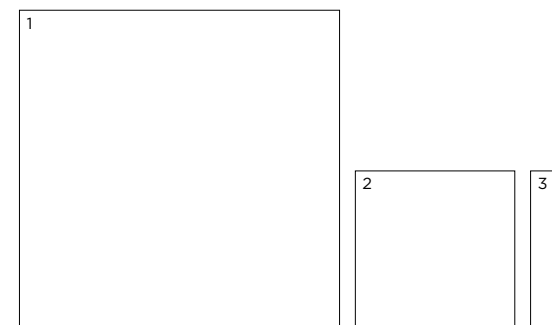


DMATRS 06




DMATRS 05

Sizes



	Size (mm)	Thickness	Finish	Colour Availability
1	1196 x 1196 (R)	10.5	Matt Glazed	All DMATR colours All DMATRS colours
2	597 x 597 (R)	10.5	Matt Glazed	All DMATR colours All DMATRS colours
3	597 x 147.5 (R)	10.5	Matt Glazed	All DMATR colours All DMATRS colours
	Skirting 600 x 38	10.5	Matt Glazed	All DMATR colours All DMATRS colours

(R) Rectified size – squared edge with bevel. Swatch colours may vary from original. Samples should be requested. Old stock in 9mm thickness may still be available in the following calibres: 1190 x 1190mm, 594 x 594mm, and 594 x 147mm. Please consult with your Sales Consultant for any further information.

 V2 - Moderate
Shade Variation

DOMUS

service@domusgroup.com | t: 020 8481 9500 | domusgroup.com

Mater (DMATR)

Technical Data

Use: Floors & Walls

Product Code: DMATR

Please note: the nominal sizes for this range are:

1200mm x 1200mm / 600mm x 600mm / 150mm x 600mm

The work sizes (calibres) are:

1190mm x 1190mm / 594mm x 594mm / 147mm x 594mm

DIMENSION & SURFACE QUALITY

Technical Characteristics	Industry Standards	Requirement	Actual Value
Length & width	BS EN ISO 10545-2	± 0.60% (max. ± 2.0mm)	Conforms
Thickness	BS EN ISO 10545-2	± 5% (max. ± 0.5mm)	Conforms
Edge straightness	BS EN ISO 10545-2	± 0.50% (max. ± 1.5mm)	Conforms
Orthogonality (squareness)	BS EN ISO 10545-2	± 0.50% (max. ± 2.0mm)	Conforms
Planarity (flatness)	BS EN ISO 10545-2	± 0.50% (max. ± 2.0mm)	Conforms
Appearance	BS EN ISO 10545-2	> 95%	Conforms

SLIP RESISTANCE

Technical Characteristics	Industry Standards	Requirement	Finish
Areas with footwear	BS EN ISO 10545-17 (DIN 51130)	R11 from 19° to 27°	Matt
Areas with bare feet	DIN 51097	B over 18° to 24°	Matt
Slip resistance (Pendulum) Coefficient of friction	BS EN 16165	Test results upon request	

All test results are based upon current test data provided by the manufacturer and are provided in good faith. Domus Group cannot be held responsible for any variation in the test data due to changes in manufacture or material characteristics. Errors & omissions excepted. Please refer to Domus Group Terms & Conditions of Sale. March 2024

PRODUCT QUALITY & DURABILITY

Technical Characteristics	Industry Standards	Requirement	Actual Value
Water absorption	BS EN ISO 10545-3	≤ 0.5%	0.06% (typical value)
Breaking strength	BS EN ISO 10545-4	≥ 7.5mm ≥ 1300 N	Conforms
Resistance to deep abrasion (unglazed tiles)	BS EN ISO 10545-6	≤ 175 mm ³	Conforms
Thermal shock resistance	BS EN ISO 10545-9	No visible defects	Resistant
Frost resistance	BS EN ISO 10545-12	No surface alteration	Resistant
Chemical resistance: Low concentrations of acids & alkalis	BS EN ISO 10545-13	No visible defects	ULA
High concentrations of acids & alkalis	BS EN ISO 10545-13	No visible defects	UHA
Domestic chemicals & additives for swimming pools	BS EN ISO 10545-13	UB/GB min.	UA
Stain resistance	BS EN ISO 10545-14	Declared value - unglazed	Class 5
Reaction to fire	Based on the decision 96/603/EC and its changes	A1 _{FL} /A1	A1 _{FL} /A1
Recycled content			20%



DOMUS

service@domusgroup.com | t: 020 8481 9500 | domusgroup.com

Mater (DMATRS)

Technical Data

Use: Floors & Walls

Product Code: DMATRS

Please note: the nominal sizes for this range are:

1200mm x 1200mm / 600mm x 600mm / 150mm x 600mm

The work sizes (calibres) are:

1190mm x 1190mm / 594mm x 594mm / 147mm x 594mm

DIMENSION & SURFACE QUALITY

Technical Characteristics	Industry Standards	Requirement	Actual Value
Length & width	BS EN ISO 10545-2	± 0.60% (max. ± 2.0mm)	Conforms
Thickness	BS EN ISO 10545-2	± 5% (max. ± 0.5mm)	Conforms
Edge straightness	BS EN ISO 10545-2	± 0.50% (max. ± 1.5mm)	Conforms
Orthogonality (squareness)	BS EN ISO 10545-2	± 0.50% (max. ± 2.0mm)	Conforms
Planarity (flatness)	BS EN ISO 10545-2	± 0.50% (max. ± 2.0mm)	Conforms
Appearance	BS EN ISO 10545-2	> 95%	Conforms

SLIP RESISTANCE

Technical Characteristics	Industry Standards	Requirement	Finish
Areas with footwear	BS EN ISO 10545-17 (DIN 51130)	R9 from 3° to 10°	Glazed
Areas with bare feet	DIN 51097	A over 12° to 18°	Glazed
Slip resistance (Pendulum) Coefficient of friction	BS EN 16165	Test results upon request	

PRODUCT QUALITY & DURABILITY

Technical Characteristics	Industry Standards	Requirement	Actual Value
Water absorption	BS EN ISO 10545-3	≤ 0.5%	0.06% (typical value)
Breaking strength	BS EN ISO 10545-4	≥ 7.5mm ≥ 1300 N	Conforms
Resistance to surface abrasion (glazed tiles)	BS EN ISO 10545-7	PEI *see classifications below	Class 3 : DMATRS 04 & 06 Class 4 : DMATRS 01, 02, 03 & 05
Thermal shock resistance	BS EN ISO 10545-9	No visible defects	Resistant
Frost resistance	BS EN ISO 10545-12	No surface alteration	Resistant
Chemical resistance: Low concentrations of acids & alkalis	BS EN ISO 10545-13	No visible defects	GLA
High concentrations of acids & alkalis	BS EN ISO 10545-13	No visible defects	GHA
Domestic chemicals & additives for swimming pools	BS EN ISO 10545-13	UB/GB min.	GA
Stain resistance	BS EN ISO 10545-14	Min. Class 3 – glazed	Class 5
Reaction to fire	Based on the decision 96/603/EC and its changes	A1 _{FL} /A1	A1 _{FL} /A1
Recycled content			20%

***PEI classifications**
PEI 1 – Very light traffic
PEI 2 - Light traffic
PEI 3 - Light to moderate traffic
PEI 4 - Moderate to heavy traffic
PEI 5 - Heavy to extra heavy traffic

All test results are based upon current test data provided by the manufacturer and are provided in good faith. Domus Group cannot be held responsible for any variation in the test data due to changes in manufacture or material characteristics. Errors & omissions excepted. Please refer to Domus Group Terms & Conditions of Sale. March 2024

