

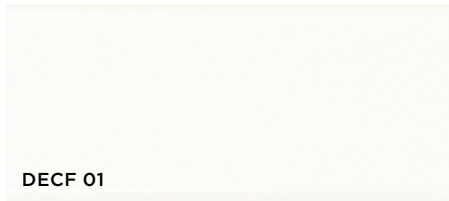
# Farrow

*Ceramic Colours*

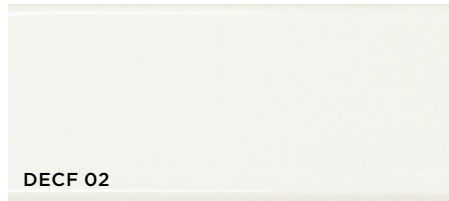


12 Colours / 1 Finish / 1 Size

An elegant glazed ceramic range of gloss strips in 250mm lengths in a palette of contemporary colours. Beautiful interior walls can be created with brick-bond, in-line or staggered layouts.



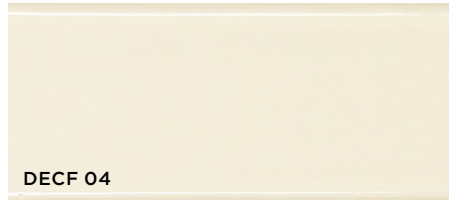
DECF 01



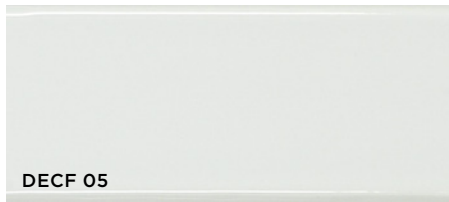
DECF 02



DECF 03



DECF 04



DECF 05



DECF 06



DECF 07



DECF 08



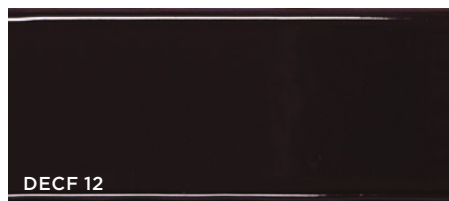
DECF 09



DECF 10



DECF 11



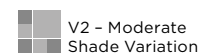
DECF 12

# Sizes



	Size (mm)	Thickness	Finish	Colour Availability
1	250 x 50 (N)	8.3	Gloss	All colours

(N) Nominal size - pressed edge. For wall use only.  
Swatch colours may vary from original. Samples should be requested.



# Farrow

Technical Data

**Product Type:** Glazed Ceramic (BS EN 14411 – Group BIII)

**Use:** Walls (Internal only)

**Product Code:** DECF

## DIMENSION & SURFACE QUALITY

Technical Characteristics	Industry Standards	Requirement (for nominal size <i>N</i> )		Actual Value
		70mm ≤ <i>N</i> < 150mm	<i>N</i> ≥ 150mm	
Length & width	BS EN ISO 10545-2	± 0.75mm	± 0.50% (max. ± 2.0mm)	Conforms
Thickness	BS EN ISO 10545-2	± 0.5mm	± 10% (max. ± 0.5mm)	Conforms
Edge straightness	BS EN ISO 10545-2	± 0.5mm	± 0.30% (max. ± 1.5mm)	Conforms
Orthogonality (squareness)	BS EN ISO 10545-2	± 0.75mm	± 0.50% (max. ± 2.0mm)	Conforms
Planarity (flatness): Centre curvature	BS EN ISO 10545-2	+ 0.75mm - 0.5mm	+ 0.5% (max. + 2.0mm) - 0.3% (max. - 1.5mm)	Conforms
Edge curvature	BS EN ISO 10545-2	+ 0.75mm - 0.5mm	+ 0.5% (max. + 2.0mm) - 0.3% (max. - 1.5mm)	Conforms
Warpage	BS EN ISO 10545-2	± 0.75mm	± 0.5% (max. ± 2.0mm)	Conforms

## PRODUCT QUALITY & DURABILITY

Technical Characteristics	Industry Standards	Requirement	Actual Value
Water absorption	BS EN ISO 10545-3	> 10%	Conforms
Crazing resistance	BS EN ISO 10545-11	No visible defects	Resistant
Chemical resistance: Low concentrations of acids & alkalis	BS EN ISO 10545-13	No visible defects	GLA
Stain resistance	BS EN ISO 10545-14	Min. Class 3	Class 5
Reaction to fire	Based on the decision 96/603/EC and its changes	A1	A1
Recycled content			61%



All test results are based upon current test data provided by the manufacturer and are provided in good faith. Domus Group cannot be held responsible for any variation in the test data due to changes in manufacture or material characteristics. Errors & omissions excepted. Please refer to Domus Group Terms & Conditions of Sale. July 2021

**DOMUS**

service@domusgroup.com | t: 020 8481 9500 | domusgroup.com