

Mantle

Porcelain Minimal



Floor & Wall: DACR 05 Matt

6 Colours / 1 Finish / 5 Sizes

Mantle is a porcelain tile range with a minimal aesthetic. The subtle character and organic tones provide a sophisticated finish and a wide choice of sizes, making Mantle an ideal solution for wall and floor surfaces.



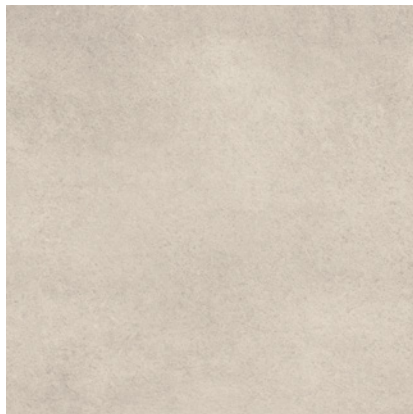
Floor & Wall: DACR 06 Matt



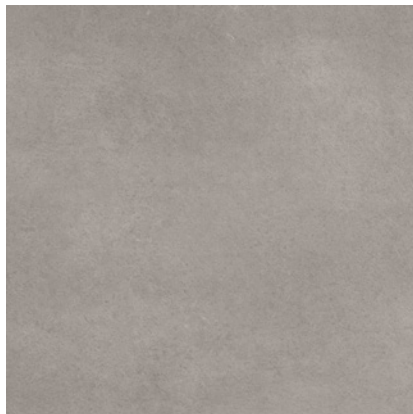
Wall & Floor: DACR 02 Matt



Floor: DACR 04 Matt



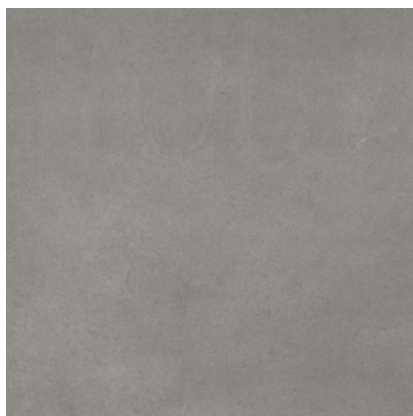
DACR 01



DACR 03



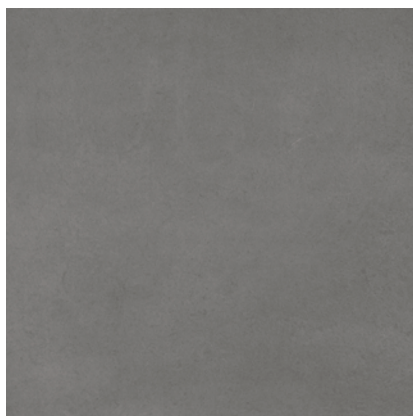
DACR 02



DACR 04

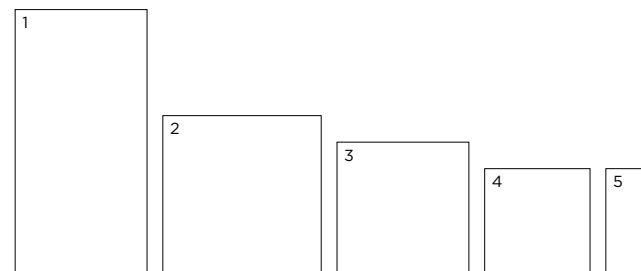


DACR 06



DACR 05

Sizes



	Size (mm)	Thickness	Finish	Colour Availability
1	1500 x 750 (R)	11	Matt	All colours
2	900 x 900 (R)	10.5	Matt	All colours
3	750 x 750 (R)	9	Matt	All colours
4	600 x 600 (R)	9	Matt	All colours
5	600 x 298 (R)	9	Matt	All colours

(R) Rectified size - square edge with bevel. Swatch colours may vary from original. Samples should be requested.

Mantle

Technical Data

Product Type: Glazed Porcelain (BS EN 14411 - Group Bla)

Use: Floors & Walls

Product Code: DACR

DIMENSION & SURFACE QUALITY

Technical Characteristics	Industry Standards	Requirement	Actual Value
Length & width	BS EN ISO 10545-2	± 0.60% (max. ± 2.0mm)	Conforms
Thickness	BS EN ISO 10545-2	± 5% (max. ± 0.5mm)	Conforms
Edge straightness	BS EN ISO 10545-2	± 0.50% (max. ± 1.5mm)	Conforms
Orthogonality (squareness)	BS EN ISO 10545-2	± 0.50% (max. ± 2.0mm)	Conforms
Planarity (flatness)	BS EN ISO 10545-2	± 0.50% (max. ± 2.0mm)	Conforms
Appearance	BS EN ISO 10545-2	> 95%	Conforms

SLIP RESISTANCE

Technical Characteristics	Industry Standards	Requirement	Finish
Areas with footwear	BS EN ISO 10545-17 (DIN 51130)	R10 from 10° to 19°	Matt
Areas with bare feet	DIN 51097	C over 24°	Matt
Slip resistance Coefficient of friction	BS 7976-2	Test results upon request	

PRODUCT QUALITY & DURABILITY

Technical Characteristics	Industry Standards	Requirement	Actual Value
Water absorption	BS EN ISO 10545-3	≤ 0.5%	Conforms
Modulus of rupture (bending strength)	BS EN ISO 10545-4	≥ 35 N/mm ²	Conforms
Breaking strength	BS EN ISO 10545-4	≥ 1300 N	Conforms
Resistance to surface abrasion	BS EN ISO 10545-7	PEI *see classifications below	Class 2 – DACR 05 Class 3 – DACR 02, 03, 04 & 06 Class 4– DACR 01
Linear thermal expansion coefficient	BS EN ISO 10545-8	Declared value	≤ 9 x 10 ⁻⁶ / °C (Typical value)
Thermal shock resistance	BS EN ISO 10545-9	No visible defects	Resistant
Crazing resistance	BS EN ISO 10545-11	No visible signs	Resistant
Frost resistance	BS EN ISO 10545-12	No surface alteration	Resistant
Chemical resistance: Low concentrations of acids & alkalis	BS EN ISO 10545-13	No visible defects	GLB
Domestic chemicals & additives for swimming pools	BS EN ISO 10545-13	GB min.	GA
Stain resistance	BS EN ISO 10545-14	Min. Class 3	Class 3
Reaction to fire	Based on the decision 96/603/EC and its changes	A1 _{FL} /A1	A1 _{FL} /A1
Colour resistance to light exposure	DIN 51094	No noticeable colour alteration	Resistant
Recycled content			16%

*PEI classifications

PEI 2 - Light traffic
PEI 3 - Light to moderate traffic
PEI 4 - Moderate to heavy traffic
PEI 5 - Heavy to extra heavy traffic



All test results are based upon current test data provided by the manufacturer and are provided in good faith. Domus Group cannot be held responsible for any variation in the test data due to changes in manufacture or material characteristics. Errors & omissions excepted. Please refer to Domus Group Terms & Conditions of Sale. November 2019

DOMUS

service@domusgroup.com | t: 020 8481 9500 | domusgroup.com