

Bjelin Parquet Lacquered

Engineered Wood



Floor: WDVLS 202 Classic UV Cured Acrylic

4 Colours / 1 Finish / 2 Sizes

Bjelin Parquet Lacquered is a sophisticated blend of tradition and innovation. Its design is enhanced by advanced technology, ensuring exceptional durability and dent resistance. Sourced from responsibly managed forests, this range of engineered wood flooring is both beautiful and sustainable.



Floor: WDVLS 206 Modern UV Cured Acrylic



Floor: WDVLS 201 Classic UV Cured Acrylic



Floor: WDVLS 203 Modern UV Cured Acrylic

Sizes



WDVLS 201

Limed



WDVLS 202

Tinted



WDVLS 203

Tinted



WDVLS 206

Tinted



	Size (mm)	Thickness (Lamella)	Finish	Colour Availability
1	Classic 68 x 340	11.2 (0.6)	UV Cured Acrylic	All colours
2	Modern 91 x 546	11.2 (0.6)	UV Cured Acrylic	All colours

Swatch colours may vary from original. Samples should be requested. This product comes in two types of parquet pieces: A and B, each clearly marked on the back and the package. For the herringbone pattern, both A and B parquet pieces are required.

Specification

Material:	Oak top layer. Välinge Compositex™ core. Natural wood backing
Grade:	Select
Brushing:	N/A
Technology:	Woodura®
Edge Detail:	Square-edged (no bevel)
Certification:	FSC™ Mix
Application:	Internal use only. Suitable with underfloor heating
Installation:	5G* Dry™ waterproof technology Recommended for floated or bonded installation
Treatments:	Limed (WDVLS 201) Tinted (WDVLS 202, 203 & 206)

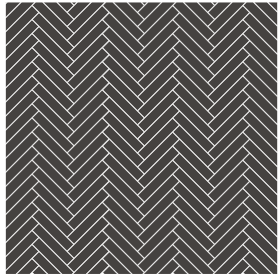


The mark of
responsible forestry
FSC™ C140725

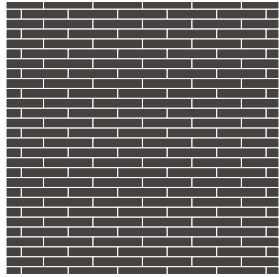
DOMUS

service@domuswood.com | t: 020 8481 9500 | domuswood.com

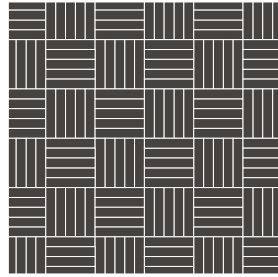
Layout Options



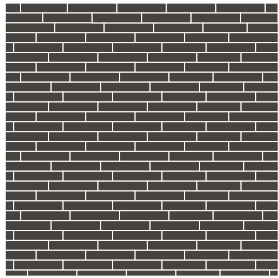
Single Herringbone



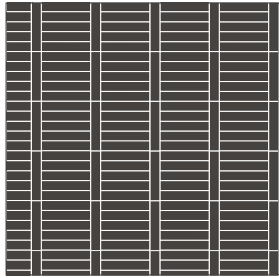
Brick



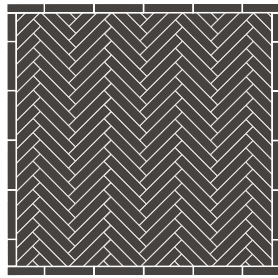
Square Basketweave



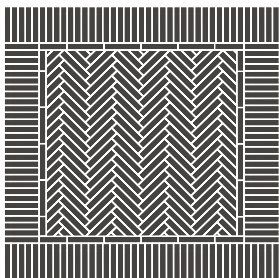
Floating



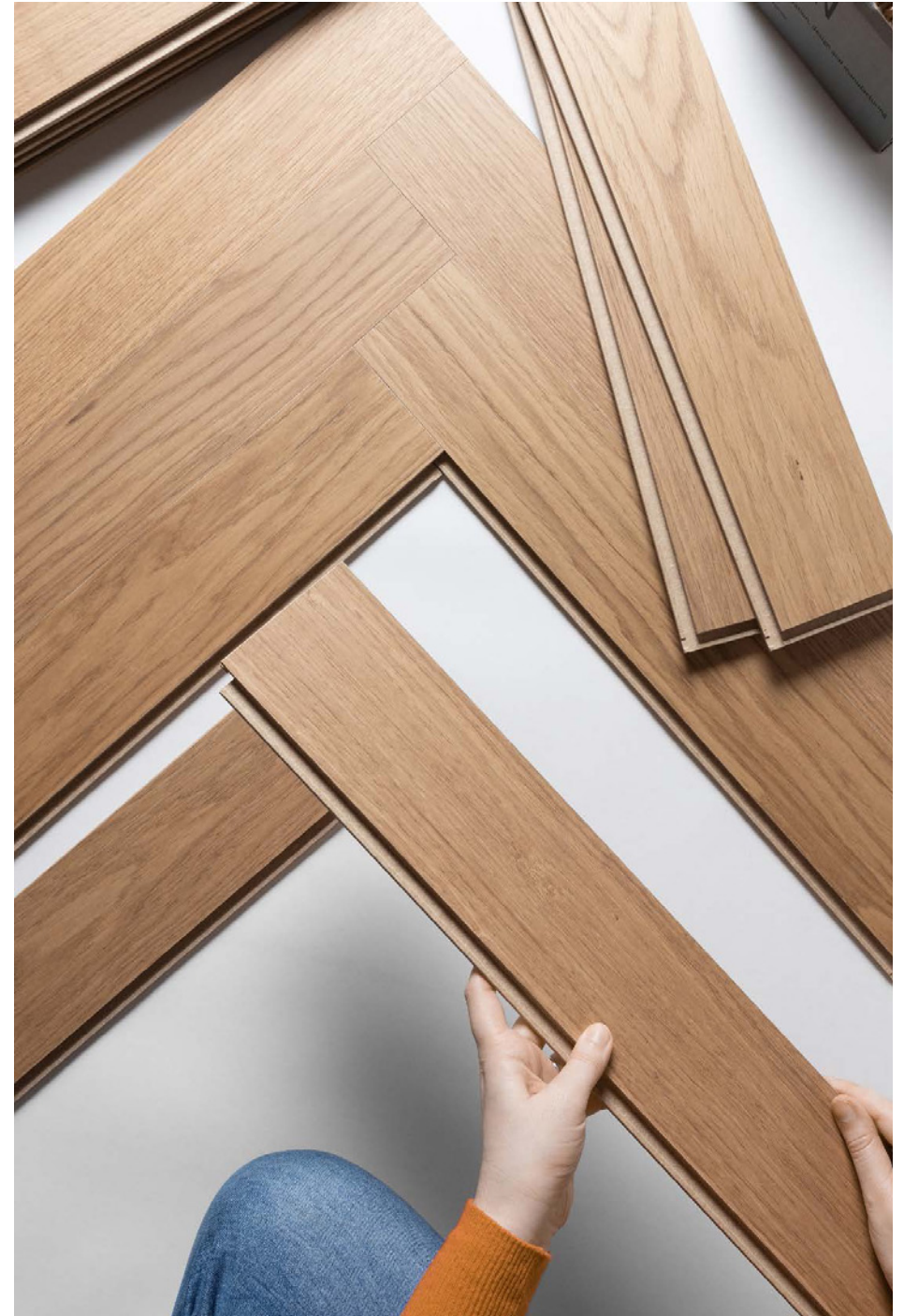
Ladder



Herringbone with Border



Herringbone with Border & Frieze



Bjelin Parquet Lacquered

Technical Data

Technical Data

Engineered Wood

CLASSIFICATION & SAFETY PROPERTIES

Packaging	Classic 68 x 340mm	Modern 91 x 546mm
Boards per box	24	22
m ² per box	0.55 m ²	1.09 m ²
m ² per pallet	53.28 m ²	52.47 m ²
Weight per m ²	11.53 kg	11.1 kg
Weight per box	6.40 kg	12.1 kg

Technical Characteristics	Industry Standard	Performance
Fire resistance	EN 13501	Cfl-S1 (hardly flammable)
Thermal conductivity	EN 12664	0.16 W/(m x K)
Thermal resistance	EN 12667	0.07 (m ² x K)/W
Formaldehyde emission	EN 717-1	E1
Brinell hardness	EN 1534	10 HB (average value)
Impact resistance	EN 14354	EC3
Thickness swelling	EN 14354	<8%
Wear resistance	EN 14354	>6000 cycles (when tested on a flat surface)
Slip resistance	EN 14342:2013	EU: With slider 55: 66 GB: With slider 96: 62
Slip resistance (pendulum) Coefficient of friction	BS EN 16165	Test results upon request
Step sound reduction when using 2mm underlay foam	EN ISO 10140-3 EN ISO 717-2	18-20 dB
Level of use (domestic)	EN ISO 10874	Class 23 Heavy Residential
Level of use (commercial)	EN ISO 10874	Class 33 Heavy Commercial

Compatible with underfloor heating systems subject to K21 installation advice available on request.

All test results are based upon current test data provided by the manufacturer and are provided in good faith. Domus Group Limited cannot be held responsible for any variation in the test data due to changes in manufacture or material characteristics. Errors & omissions excepted. Please refer to Domus Group Limited Terms & Conditions of Sale, 14 May 2026 2:52 pm



The mark of
responsible forestry
FSC™ C140725

DOMUS

service@domuswood.com | t: 020 8481 9500 | domuswood.com