

Bjelin Parquet Lacquered

Engineered Wood



Floor: WDVLS 204 Herringbone UV Cured Acrylic

3 Colours / 1 Finish / 1 Size

Bjelin Parquet Lacquered is a sophisticated blend of tradition and innovation. Its classic design is enhanced by advanced technology, ensuring exceptional durability and dent resistance. Sourced from responsibly managed forests, this range of engineered wood flooring is both beautiful and sustainable.



Floor: WDVLS 202 Herringbone UV Cured Acrylic



Floor: WDVLS 203 Herringbone UV Cured Acrylic



Floor: WDVLS 202 Herringbone UV Cured Acrylic

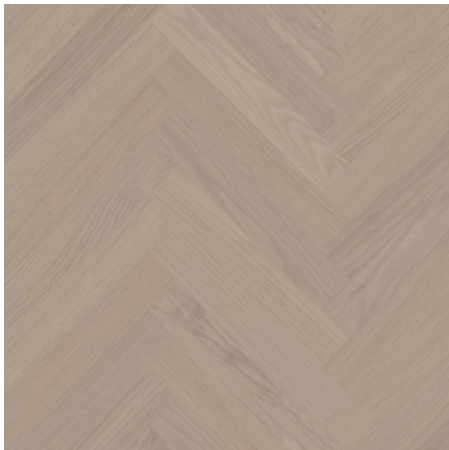
Sizes



WDVLS 202 Tinted



WDVLS 203 Tinted



WDVLS 204 Tinted

1

	Size (mm)	Thickness (Lamella)	Finish	Colour Availability
1	91 x 546	11.3 (0.6)	UV Cured Acrylic	All colours

Swatch colours may vary from original. Samples should be requested. This product comes in two types of parquet pieces: A and B, each clearly marked on the back and the package. For the herringbone pattern, both A and B parquet pieces are required.

Specification

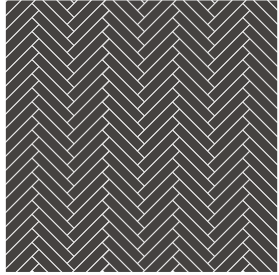
Material:	Oak top layer. Välinge Compositetek™ core. Natural wood backing
Grade:	Select
Brushing:	N/A
Technology:	Woodura®
Edge Detail:	4-way micro-bevel
Certification:	FSC™ Mix
Application:	Internal use only. Suitable with underfloor heating
Installation:	5G* Click
	Recommended for floated or bonded installation
Treatment:	Tinted



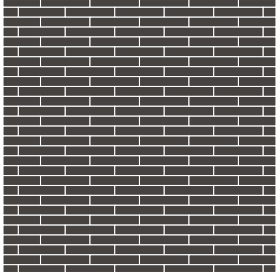
The mark of responsible forestry
FSC® C140725

DOMUS

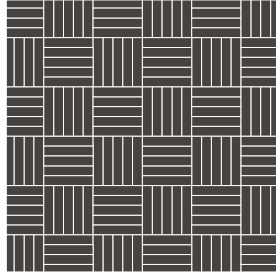
Layout Options



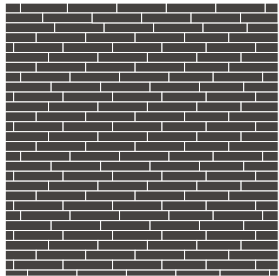
Single Herringbone



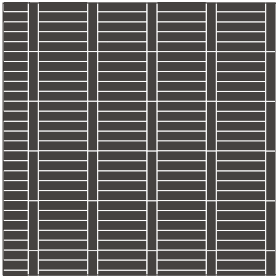
Brick



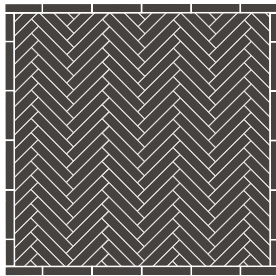
Square Basketweave



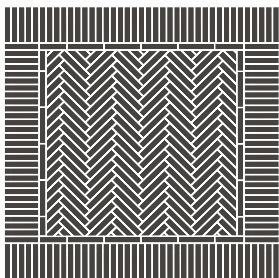
Floating



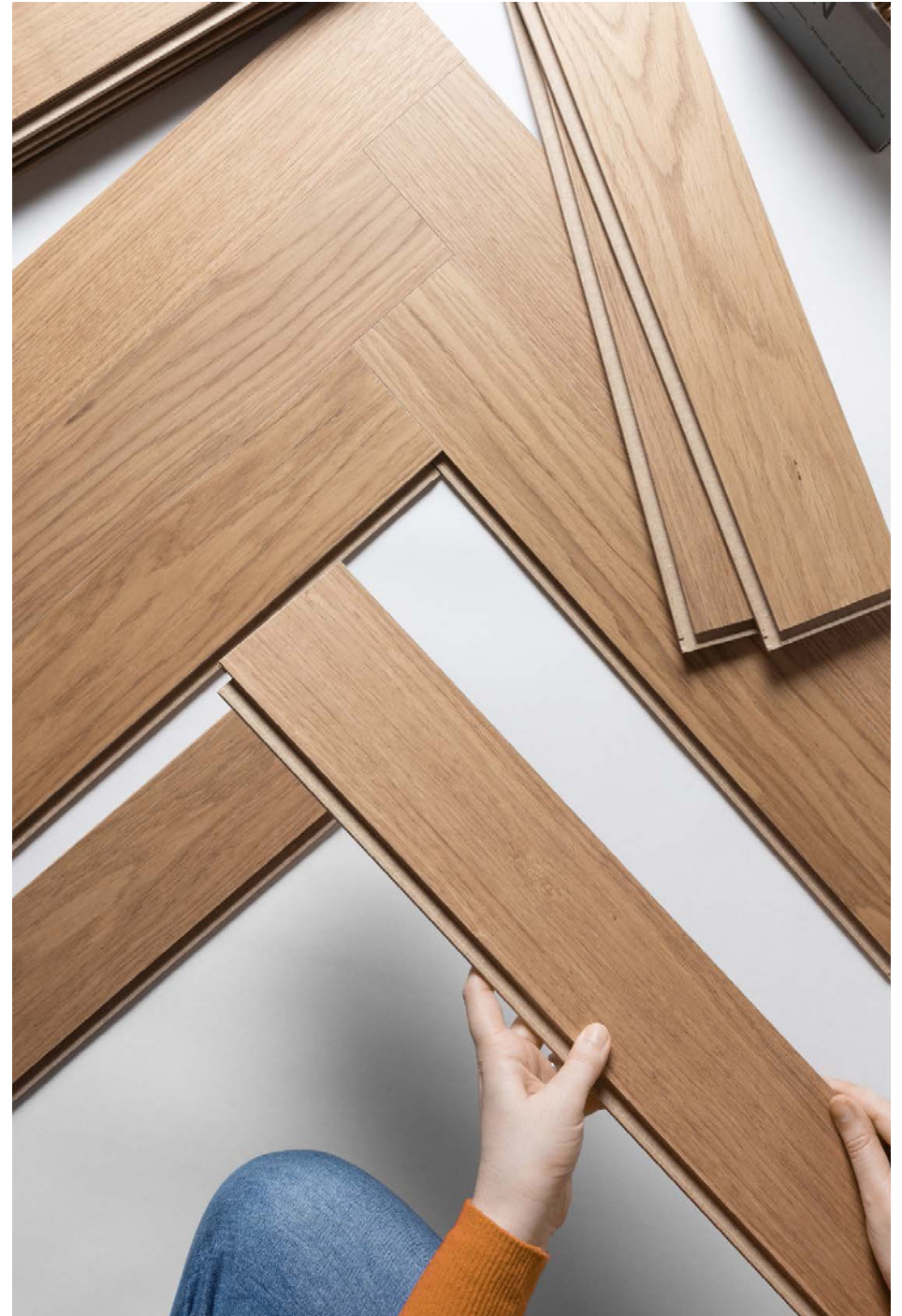
Ladder



Herringbone with Border



Herringbone with
Border & Frieze



Bjelin Parquet Lacquered

Technical Data

Technical Data

Engineered Wood

Packaging

Boards per box	22
m ² per box	1.09m ²
m ² per pallet	52.47m ²
Weight per m ²	11kg
Weight per box	12kg

CLASSIFICATION & SAFETY PROPERTIES

Technical Characteristics	Industry Standard	Performance
Fire resistance	EN 13501	Cfl-S1 (hardly flammable)
Thermal conductivity	EN 12664	0.16W/(m*K)
Thermal resistance	EN 12667	0.07(m ² *K)/W
Formaldehyde emission	EN 717-1	E1
Brinell hardness	EN 1534	10HB (average value)
Impact resistance	EN 14354	EC3
Thickness swelling	EN 14354	<8%
Wear resistance	EN 14354	>6000 cycles
Slip resistance	EN 14342:2013	EU: With slider 55: 66 GB: With slider 96: 62
Slip resistance (pendulum) Coefficient of friction	BS EN 16165	Test results upon request
Step sound reduction when using 2mm underlay foam	EN ISO 10140-3 EN ISO 717-2	18-20dB
Level of use (domestic)	EN ISO 10874	Class 23 Heavy Residential
Level of use (commercial)	EN ISO 10874	Class 33 Heavy Commercial

Compatible with underfloor heating systems subject to K21 installation advice available on request.

All test results are based upon current test data provided by the manufacturer and are provided in good faith. Domus Group Limited cannot be held responsible for any variation in the test data due to changes in manufacture or material characteristics. Errors & omissions excepted. Please refer to Domus Group Limited Terms & Conditions of Sale, 5 December 2024 9:06 am



The mark of
responsible forestry
FSC® C140725

DOMUS

service@domuswood.com | t: 020 8481 9500 | domuswood.com