

# Verso Wall

*Ceramic Design*



**6 Colours / 2 Patterns / 1 Finish / 1 Size**

Verso Wall is a ceramic tile range that uses parallel and symmetrical lines to create two unique reliefs, Arpa and Arco. The surface is flat, and the grooves form a semicircle. The colours are available in two different forms: Vein Cut and Cross Cut.







Wall: DLVEW 02 Vein Cut Arco Natural



Wall: DLVEW 04 Cross Cut Arco Natural



DLVEW 04 Cross Cut Arco



DLVEW 04 Cross Cut Arpa



DLVEW 01 Vein Cut Arco



DLVEW 01 Vein Cut Arpa



DLVEW 05 Cross Cut Arco



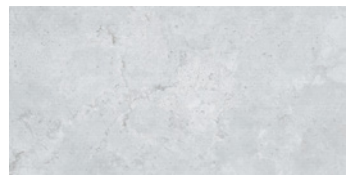
DLVEW 05 Cross Cut Arpa



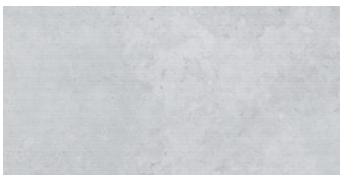
DLVEW 02 Vein Cut Arco



DLVEW 02 Vein Cut Arpa



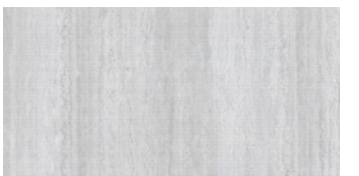
DLVEW 06 Cross Cut Arco



DLVEW 06 Cross Cut Arpa

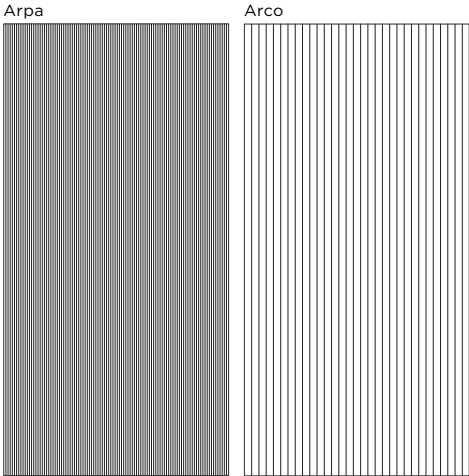


DLVEW 03 Vein Cut Arco



DLVEW 03 Vein Cut Arpa

# Sizes



	Size (mm)	Thickness	Finish	Colour Availability
1	1198 x 598 (R)	9	Natural	All colours

(R) Rectified size – squared edge with bevel. For use on internal walls only.  
Swatch colours may vary from original. Samples should be requested.

V2 – Moderate  
Shade Variation

DOMUS

# Verso Wall

## Technical Data

**Product Type:** Glazed Ceramic (BS EN 14411 – Group BIII)

**Use:** Walls (Internal only)

**Product Code:** DLVEW

### DIMENSION & SURFACE QUALITY

Technical Characteristics	Industry Standards	Requirement (for nominal size N)	Actual Value
Length & width	BS EN ISO 10545-2	± 0.50% (max. ± 2.0mm)	Conforms
Thickness	BS EN ISO 10545-2	± 10% (max. ± 0.5mm)	Conforms
Edge straightness	BS EN ISO 10545-2	± 0.30% (max. ± 1.5mm)	Conforms
Orthogonality (squareness)	BS EN ISO 10545-2	± 0.50% (max. ± 2.0mm)	Conforms
Planarity (flatness): Centre curvature	BS EN ISO 10545-2	+ 0.5% (max. + 2.0mm) - 0.3% (max. - 1.5mm)	Conforms
Edge curvature	BS EN ISO 10545-2	+ 0.5% (max. + 2.0mm) - 0.3% (max. - 1.5mm)	Conforms
Warpage	BS EN ISO 10545-2	± 0.5% (max. ± 2.0mm)	Conforms

### PRODUCT QUALITY & DURABILITY

Technical Characteristics	Industry Standards	Requirement	Actual Value
Water absorption	BS EN ISO 10545-3	> 10%	Conforms
Modulus of rupture (bending strength)	BS EN ISO 10545-4	≥ 7.5mm thick ≥ 12 N/mm²	≥ 18 N/mm² (Typical Value)
Breaking strength	BS EN ISO 10545-4	≥ 7.5mm thick ≥ 600 N	≥ 600 N (Typical Value)
Thermal shock resistance	BS EN ISO 10545-9	No visible defects	Resistant
Crazing resistance	BS EN ISO 10545-11	No visible signs	Resistant
Chemical resistance: Low concentrations of acids & alkalis	BS EN ISO 10545-13	No visible defects	GLA
High concentrations of acids & alkalis	BS EN ISO 10545-13	No visible defects	GHA
Domestic chemicals & additives for swimming pools	BS EN ISO 10545-13	GB min.	GA
Stain resistance	BS EN ISO 10545-14	Min. Class 3	Class 4
Reaction to fire	Based on the decision 96/603/EC and its changes	A1	A1
Recycled content			45%



All test results are based upon current test data provided by the manufacturer and are provided in good faith. Domus Group cannot be held responsible for any variation in the test data due to changes in manufacture or material characteristics. Errors & omissions excepted. Please refer to Domus Group Terms & Conditions of Sale.  
March 2025