

# Kendo

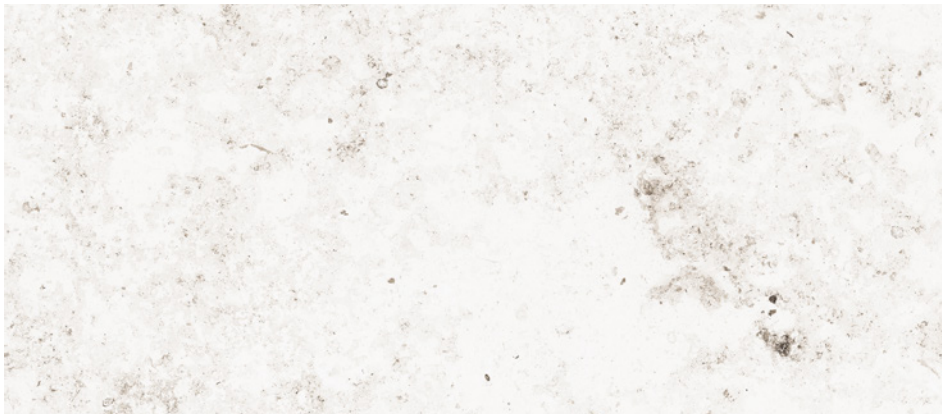
*Porcelain Stone*



**3** Colours / **3** Finishes / **6** Sizes / **3** Mosaics

Kendo is inspired by the protected stone of the Deutch Jura Mountains, a stone from marine deposits with numerous markings on its surface. This porcelain tile range depicts dark-coloured organic-shaped markings with an extraordinary richness of intensities.

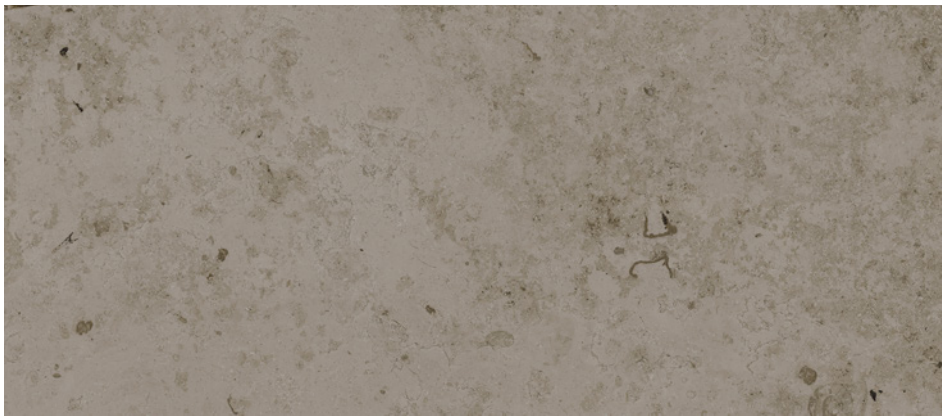




DLKN 04

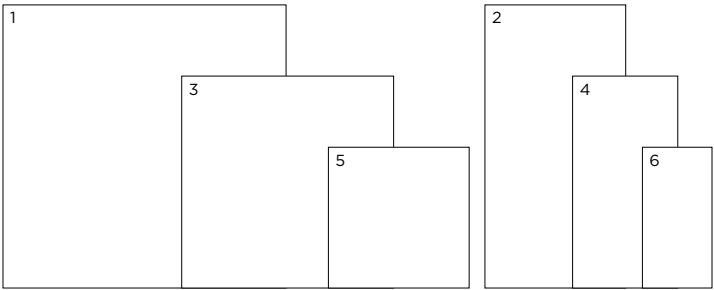


DLKN 01



DLKN 02

# Sizes



|   | Size (mm)       | Thickness | Finish  | Colour Availability                       |
|---|-----------------|-----------|---|---|
| 1 | 1198 x 1198 (R) | 9         | Soft Textured<br>Honed<br>Bush Hammered Anti-Slip | All colours<br>All colours<br>All colours |
| 2 | 1198 x 598 (R)  | 9         | Soft Textured<br>Honed<br>Bush Hammered Anti-Slip | All colours<br>All colours<br>All colours |
| 3 | 898 x 898 (R)   | 9         | Soft Textured<br>Honed<br>Bush Hammered Anti-Slip | All colours<br>All colours<br>All colours |
| 4 | 898 x 448 (R)   | 9         | Soft Textured<br>Honed<br>Bush Hammered Anti-Slip | All colours<br>All colours<br>All colours |
| 5 | 598 x 598 (R)   | 9         | Soft Textured<br>Honed<br>Bush Hammered Anti-Slip | All colours<br>All colours<br>All colours |
| 6 | 598 x 298 (R)   | 9         | Soft Textured<br>Honed<br>Bush Hammered Anti-Slip | All colours<br>All colours<br>All colours |

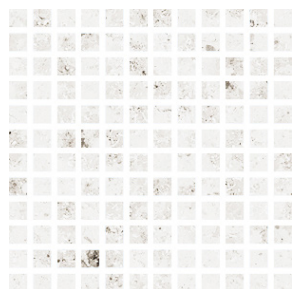
(R) Rectified size – squared edge with bevel. Mosaics and special pieces shown on next page.  
Swatch colours may vary from original. Samples should be requested.

V2 – Moderate  
Shade Variation

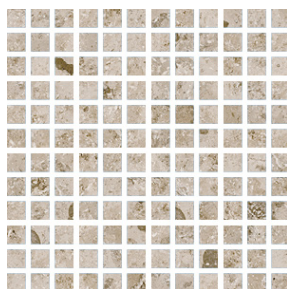
DOMUS

# Mosaics & Special Pieces

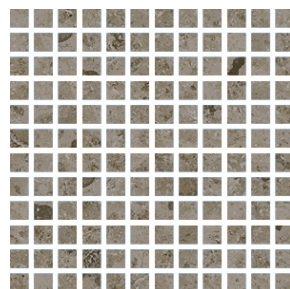
Mosaic 25 x 25mm



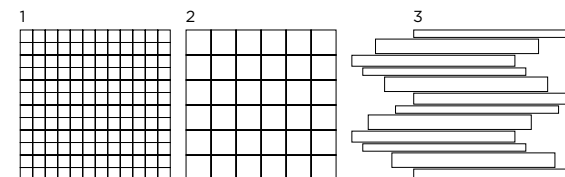
DLKN 04



DLKN 01



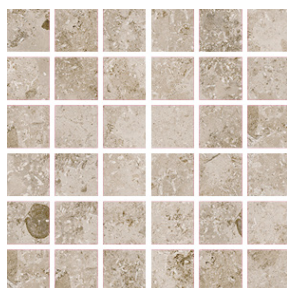
DLKN 02



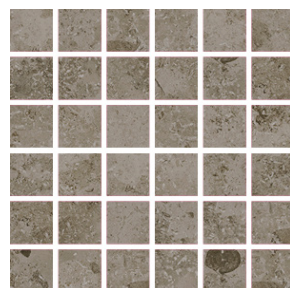
Mosaic 48 x 48mm



DLKN 04



DLKN 01



DLKN 02

Muretto Mosaic



DLKN 04



DLKN 01



DLKN 02

|   | Size (mm)                            | Thickness | Finish  | Colour Availability                       |
|---|--------------------------------------|-----------|---|---|
| 1 | Mosaic 25 x 25<br>on 298 x 298 sheet | 9         | Soft Textured<br>Honed<br>Bush Hammered Anti-Slip | All colours<br>All colours<br>All colours |
| 2 | Mosaic 48 x 48<br>on 298 x 298 sheet | 9         | Soft Textured<br>Honed<br>Bush Hammered Anti-Slip | All colours<br>All colours<br>All colours |
| 3 | Muretto Mosaic<br>on 298 x 298 sheet | 9         | Soft Textured<br>Honed<br>Bush Hammered Anti-Slip | All colours<br>All colours<br>All colours |
|   | Skirting<br>1198 x 48                | 9         | Soft Textured<br>Honed<br>Bush Hammered Anti-Slip | All colours<br>All colours<br>All colours |
|   | Skirting<br>898 x 48                 | 9         | Soft Textured<br>Honed<br>Bush Hammered Anti-Slip | All colours<br>All colours<br>All colours |
|   | Skirting<br>598 x 48                 | 9         | Soft Textured<br>Honed<br>Bush Hammered Anti-Slip | All colours<br>All colours<br>All colours |

Swatch colours may vary from original. Samples should be requested.

# Kendo

## Technical Data

Product Type: Glazed Porcelain (BS EN 14411 – Group BIa)

Use: Floors & Walls

Product Code: DLKN

### DIMENSION & SURFACE QUALITY

| Technical Characteristics  | Industry Standards | Requirement (for nominal size <i>N</i> ) |                           | Actual Value |
|----------------------------|--------------------|--|---------------------------|--------------|
|                            |                    | 70mm ≤ <i>N</i> < 150mm                  | <i>N</i> ≥ 150mm          |              |
| Length & width             | BS EN ISO 10545-2  | ± 0.9mm                                  | ± 0.60%<br>(max. ± 2.0mm) | Conforms     |
| Thickness                  | BS EN ISO 10545-2  | ± 0.5mm                                  | ± 5%<br>(max. ± 0.5mm)    | Conforms     |
| Edge straightness          | BS EN ISO 10545-2  | ± 0.75mm                                 | ± 0.50%<br>(max. ± 1.5mm) | Conforms     |
| Orthogonality (squareness) | BS EN ISO 10545-2  | ± 0.75mm                                 | ± 0.50%<br>(max. ± 2.0mm) | Conforms     |
| Planarity (flatness)       | BS EN ISO 10545-2  | ± 0.75mm                                 | ± 0.50%<br>(max. ± 2.0mm) | Conforms     |
| Appearance                 | BS EN ISO 10545-2  | > 95%                                    |                           | Conforms     |

### SLIP RESISTANCE

| Technical Characteristics                             | Industry Standards                | Requirement                                | Finish                                   |
|---|-----------------------------------|--|--|
| Areas with footwear                                   | BS EN ISO 10545-17<br>(DIN 51130) | R10 from 10° to 19°<br>R11 from 19° to 27° | Soft Textured<br>Bush Hammered Anti-Slip |
| Areas with bare feet                                  | DIN 51097                         | B over 18° to 24°<br>C over 24°            | Soft Textured<br>Bush Hammered Anti-Slip |
| Slip resistance (Pendulum)<br>Coefficient of friction | BS 16165                          | Test results upon request                  |  |

All test results are based upon current test data provided by the manufacturer and are provided in good faith. Domus Group cannot be held responsible for any variation in the test data due to changes in manufacture or material characteristics. Errors & omissions excepted. Please refer to Domus Group Terms & Conditions of Sale.

### PRODUCT QUALITY & DURABILITY

| Technical Characteristics                                     | Industry Standards                                    | Requirement  | Actual Value           |
|---|---|--|------------------------|
| Water absorption  | BS EN ISO 10545-3                                     | ≤ 0.5%   | < 0.5%                 |
| Modulus of rupture (bending strength)                         | BS EN ISO 10545-4                                     | ≥ 35 N/mm <sup>2</sup>                             | > 52 N/mm <sup>2</sup> |
| Breaking strength   | BS EN ISO 10545-4                                     | ≥ 1300 N   | > 2,500 N              |
| Resistance to surface abrasion<br>(glazed tiles)              | BS EN ISO 10545-7                                     | PEI<br>*see classifications below                  | 3                      |
| Thermal shock resistance                                      | BS EN ISO 10545-9                                     | No visible defects                                 | Conforms               |
| Crazing resistance  | BS EN ISO 10545-11                                    | No visible signs                                   | Conforms               |
| Frost resistance  | BS EN ISO 10545-12                                    | No surface alteration                              | Conforms               |
| Chemical resistance:<br>Low concentrations of acids & alkalis | BS EN ISO 10545-13                                    | No visible defects                                 | GLA                    |
| High concentrations of acids & alkalis                        | BS EN ISO 10545-13                                    | No visible defects                                 | GHA                    |
| Domestic chemicals & additives<br>for swimming pools          | BS EN ISO 10545-13                                    | UB/GB min.   | GA                     |
| Stain resistance  | BS EN ISO 10545-14                                    | Min. Class 3 – glazed<br>Declared value - unglazed | Class 5                |
| Reaction to fire  | Based on the decision<br>96/603/EC<br>and its changes | A1 <sub>FL</sub> /A1                               | A1 <sub>FL</sub> /A1   |
| Recycled content  |   |  | 30%                    |

\*PEI classifications  
PEI 1 - Very light traffic  
PEI 2 - Light traffic  
PEI 3 - Light to moderate traffic  
PEI 4 - Moderate to heavy traffic  
PEI 5 - Heavy to extra heavy traffic



DOMUS

service@domusgroup.com | t: 020 8481 9500 | domusgroup.com