

Hamar

Porcelain Stone



6 Colours / 2 Finishes / 6 Sizes

Hamar is a porcelain collection inspired by the natural character of Jura stone. Subtle tones and a refined mineral texture create calm, timeless surfaces. Designed for versatility, it performs seamlessly across residential and public spaces.





Wall: Hamar Wall DAHMM 01 Filo Décor Matt
Floor: DAHM 06 Matt



Floor: DAHM 03 Matt



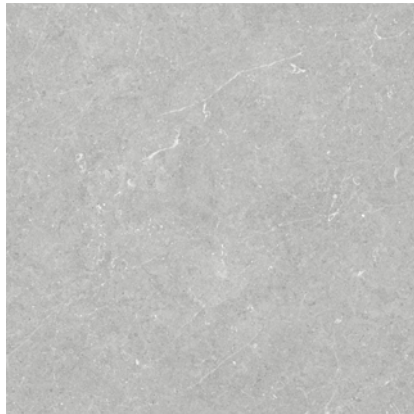
DAHM 01



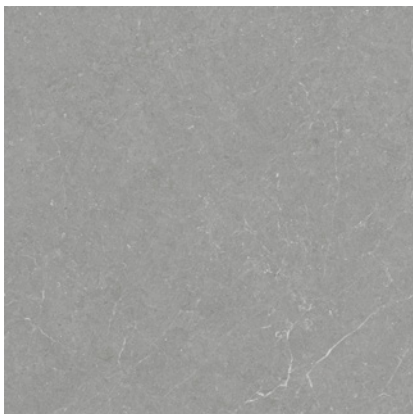
DAHM 02



DAHM 03



DAHM 04

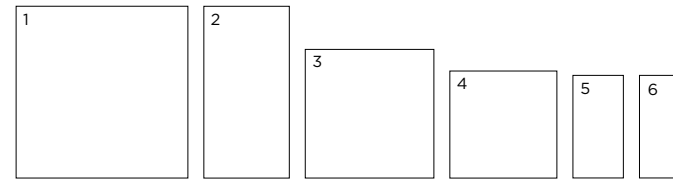


DAHM 05



DAHM 06

Sizes



	Size (mm)	Thickness	Finish	Colour Availability
1	1200 x 1200 (R)	9	Matt	All colours
2	1200 x 600 (R)	9	Matt Natural Grip	All colours All colours
3	900 x 900 (R)	9	Matt	All colours
4	600 x 600 (R)	9	Matt Natural Grip	All colours DAHM 02, 03, 04 & 05
5	600 x 298 (R)	9	Matt	All colours
6	600 x 150 (R)	9	Matt	All colours

(R) Rectified size - square edge with bevel. Special pieces shown on next page. Swatch colours may vary from original. Samples should be requested.

V2 - Moderate
Shade Variation

DOMUS

service@domusgroup.com | t: 020 8481 9500 | domusgroup.com

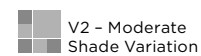


Floor: DAHM 03 Matt

Special Pieces

Size (mm)	Thickness	Finish	Colour Availability
Skirting			
1200 x 90	9	Matt	All colours
600 x 90	9	Matt	All colours
Bullnose Step Tread			
1200 x 300	9	Matt	All colours
600 x 300	9	Matt	All colours
Step Tread			
1200 x 300	9	Matt	All colours
600 x 300	9	Matt	All colours

Swatch colours may vary from original. Samples should be requested.



V2 - Moderate
Shade Variation

DOMUS

service@domusgroup.com | t: 020 8481 9500 | domusgroup.com

Hamar

Technical Data

Use: Floors & Walls
Product Code: DAHM

DIMENSION & SURFACE QUALITY

Technical Characteristics	Industry Standards	Requirement	Actual Value
Length & width	BS EN ISO 10545-2	± 0.60% (max. ± 2.0mm)	Conforms
Thickness	BS EN ISO 10545-2	± 5% (max. ± 0.5mm)	Conforms
Edge straightness	BS EN ISO 10545-2	± 0.50% (max. ± 1.5mm)	Conforms
Orthogonality (squareness)	BS EN ISO 10545-2	± 0.50% (max. ± 2.0mm)	Conforms
Planarity (flatness)	BS EN ISO 10545-2	± 0.50% (max. ± 2.0mm)	Conforms
Appearance	BS EN ISO 10545-2	> 95%	Conforms

SLIP RESISTANCE

Technical Characteristics	Industry Standards	Requirement	Finish
Areas with footwear	BS EN 16165 Annex B	R10 from 10° to 19° R11 from 19° to 27°	Matt Natural Grip
Areas with bare feet	BS EN 16165 Annex A	B over 18° to 24° C over 24°	Matt Natural Grip
Slip resistance (Pendulum) Coefficient of friction	BS EN 16165	Test results upon request	

PRODUCT QUALITY & DURABILITY

Technical Characteristics	Industry Standards	Requirement	Actual Value
Water absorption	BS EN ISO 10545-3	≤ 0.5%	Conforms
Modulus of rupture (bending strength)	BS EN ISO 10545-4	≥ 35 N/mm ²	Conforms
Breaking strength	BS EN ISO 10545-4	≥ 7.5mm ≥ 1300 N	Conforms
Resistance to surface abrasion (glazed tiles)	BS EN ISO 10545-7	PEI *see classifications below	Class 3 – DAHM 06 Class 4 – DAHM 01, 02, 03, 04 & 05
Linear thermal expansion coefficient	BS EN ISO 10545-8	Declared value	< 9 x 10 ⁻⁶ °C ⁻¹ (Average value)
Thermal shock resistance	BS EN ISO 10545-9	No visible defects	Resistant
Crazing resistance	BS EN ISO 10545-11	No visible signs	Resistant
Frost resistance	BS EN ISO 10545-12	No surface alteration	Resistant
Chemical resistance: Low concentrations of acids & alkalis	BS EN ISO 10545-13	No visible defects	GLA
High concentrations of acids & alkalis	BS EN ISO 10545-13	No visible defects	GHA
Domestic chemicals & additives for swimming pools	BS EN ISO 10545-13	UB/GB min.	GA
Stain resistance	BS EN ISO 10545-14	Min. Class 3 – glazed	Conforms
Reaction to fire	Based on the decision 96/603/EC and its changes	A1 _{FL} /A1	A1 _{FL} /A1
Recycled content			16%

*PEI classifications

PEI 1 – Very light traffic
PEI 2 – Light traffic
PEI 3 – Light to moderate traffic
PEI 4 – Moderate to heavy traffic
PEI 5 – Heavy to extra heavy traffic



All test results are based upon current test data provided by the manufacturer and are provided in good faith. Domus Group cannot be held responsible for any variation in the test data due to changes in manufacture or material characteristics. Errors & omissions excepted. Please refer to Domus Group Terms & Conditions of Sale. May 2026

DOMUS

service@domusgroup.com | t: 020 8481 9500 | domusgroup.com