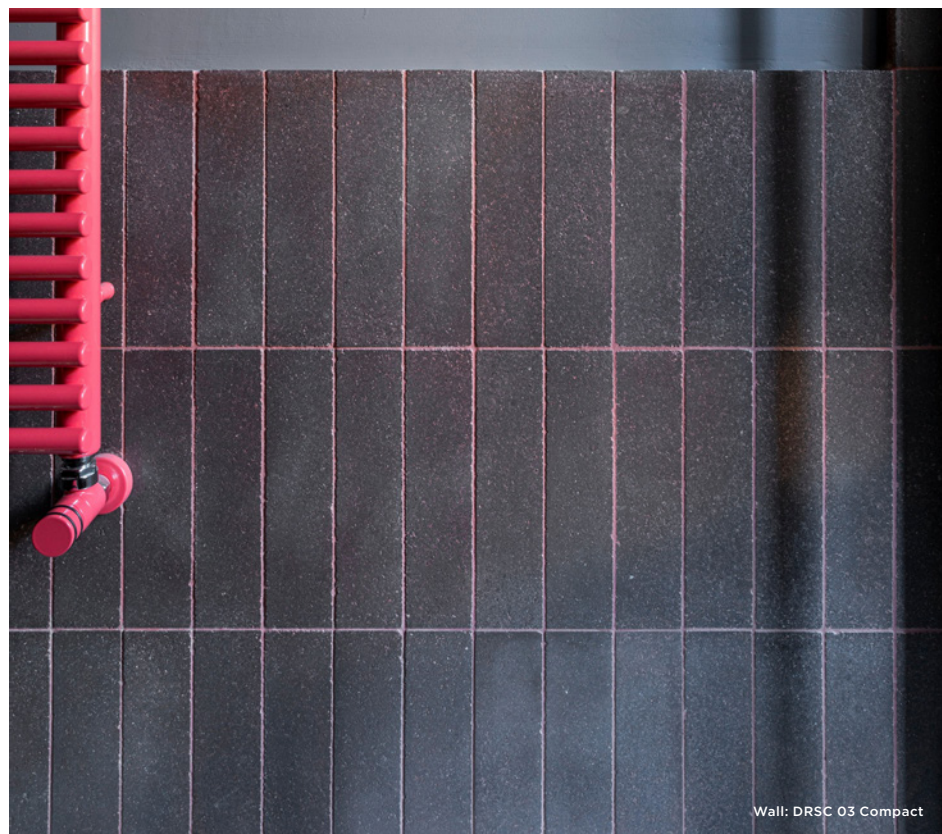


Cromie 15mm

Technical Stone



Wall: DRSC 03 Compact

20 Colours / 2 Finishes / 11 Sizes

Cromie 15mm is a colourful eco-friendly interior tile range comprised of natural recycled materials. The by-products from Italy's quarries are 'cold-pressed' into tiles, producing a uniquely textured, low-embodied energy material—sealed for ease of cleaning. View Cromie 22mm for unsealed tiles suitable for outdoor use.



Wall: DRSC 07 Compact

Compact Finish



DRSC 07



DRSC 04



DRSC 05



DRSC 06



DRSC 09



DRSC 10



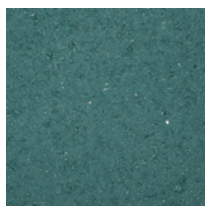
DRSC 11



DRSC 12



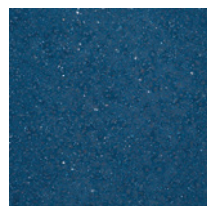
DRSC 19



DRSC 17



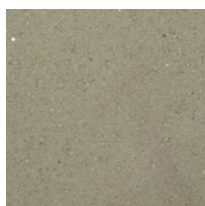
DRSC 18



DRSC 20



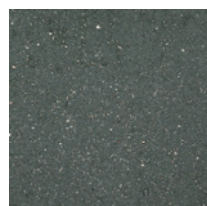
DRSC 13



DRSC 15



DRSC 14



DRSC 16



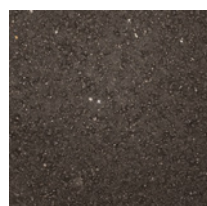
DRSC 01



DRSC 02

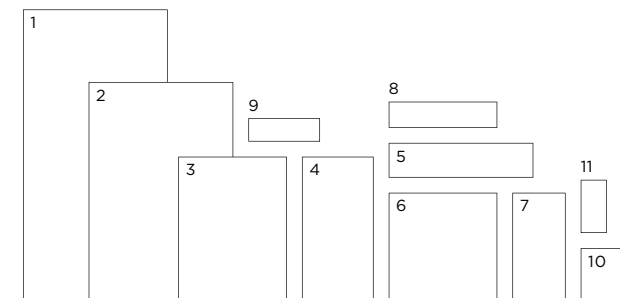


DRSC 08



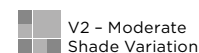
DRSC 03

Sizes



	Size (mm)	Thickness	Finish	Colour Availability
1	672 x 333 (N)	15	Compact Consolare	All colours All colours
2	505 x 333 (N)	15	Compact Consolare	All colours All colours
3	333 x 250 (N)	15	Compact Consolare	All colours All colours
4	333 x 165 (N)	15	Compact Consolare	All colours All colours
5	333 x 80 (N)	15	Compact Consolare	All colours All colours
6	250 x 250 (N)	15	Compact Consolare	All colours All colours
7	250 x 122.5 (N)	15	Compact Consolare	All colours All colours
8	250 x 60 (N)	15	Compact Consolare	All colours All colours
9	165 x 54 (N)	15	Compact Consolare	All colours All colours
10	122.5 x 122.5 (N)	15	Compact Consolare	All colours All colours
11	122.5 x 60 (N)	15	Compact Consolare	All colours All colours

(N) Nominal size - pressed edge. Swatch colours may vary from original. Samples should be requested. This is a sealed product suitable for indoor use only.



DOMUS

Consolare Finish



DRSC 07



DRSC 04



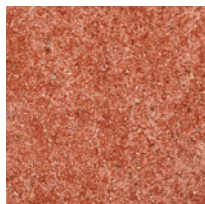
DRSC 05



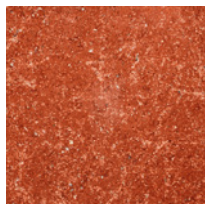
DRSC 06



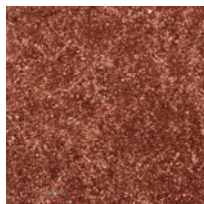
DRSC 09



DRSC 10



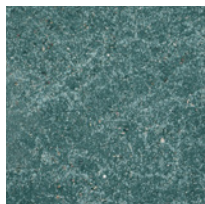
DRSC 11



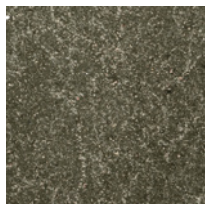
DRSC 12



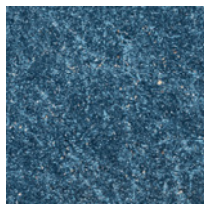
DRSC 19



DRSC 17



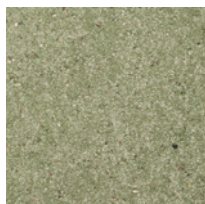
DRSC 18



DRSC 20



DRSC 13



DRSC 15



DRSC 14



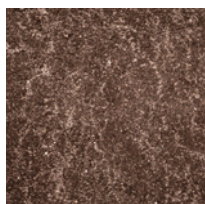
DRSC 16



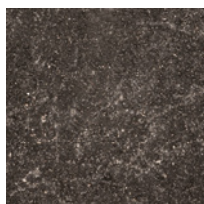
DRSC 01



DRSC 02



DRSC 08



DRSC 03

Special Pieces

	Size (mm)	Thickness	Finish	Colour Availability
1	Step Tread Toro 333 x 250 (N)	30	Compact Consolare	All colours All colours
2	Step Tread Becco 333 x 250 (N)	22	Compact Consolare	All colours All colours
3	Skirting 250 x 122.5 (N)	15	Compact Consolare	All colours All colours

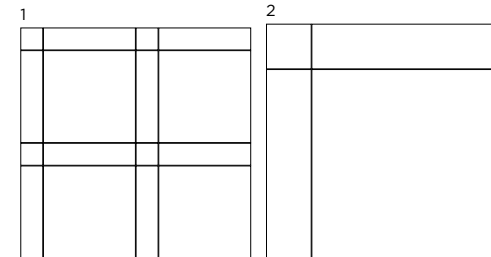
(N) Nominal size - pressed edge.





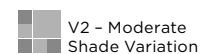
Zdora XL
 Cromie 15mm DRSC 01 Compact, DRSC 06 Compact & DRSC 12 Compact
 Pigmento 15mm DSRG 01 Compact

Custom Designs



	Size (mm)	Thickness	Finish	Colour Availability
1	Zdora 122.5 x 122.5 (N) 122.5 x 30 (N) 30 x 30 (N) on 309 x 309 sheet	15	Compact	All colours
2	Zdora XL 250 x 250 (N) 250 x 60 (N) 60 x 60 (N) on 311 x 311 sheet	15	Compact	All colours

(N) Nominal size – pressed edge. Swatch colours may vary from original. Samples should be requested. This is a sealed product suitable for indoor use only. Zdora and Zdora XL custom designs can be produced upon request using any colours of Cromie 15mm and Pigmento 15mm.



DOMUS

Cromie 15mm

Technical Data

Product Type: Reconstituted Stone (sealed)

Use: Internal Floors & Walls

Product Code: DRSC

Finishes: Compact – smooth surface, even edges

Consolare – aged surface, aged edges

DIMENSION & SURFACE QUALITY

THIS IS AN ARTISANAL, HANDMADE / HAND-FINISHED PRODUCT
IRREGULAR EDGES, VARIATION IN TONE, THICKNESS, SIZE / PLANARITY
(FLATNESS) ARE CHARACTERISTICS OF THIS MATERIAL
DIMENSIONS CAN VARY BY ± 1 mm FROM THE NOMINAL SIZE.

SLIP RESISTANCE

Technical Characteristics	Industry Standards	Requirement	Finish
Areas with footwear	DIN 51130	R12 from 27° to 35°	Sealed (15mm)
Slip resistance Coefficient of friction	BS 7976-2 / BS EN 16165	Test results upon request	

PRODUCT QUALITY & DURABILITY

Technical Characteristics	Industry Standards	Unit of Measure	Actual Value
Impact Strength	RD n 2234	Kg/cm ²	0.34 (typical value)
Resistance to abrasion	EN 202	mm ²	705
Flexural strength	UN EN 100	Kg/cm ²	Side 12.5 = 119 kg/cm ² Side 25 = 88 kg/cm ²
Resistance to frost	UNI EN 202	Declared Value	Resistant
Compressive strength	UNI EN 202	Kg/m ²	744 - 1282
Resistance to salt			Resistant
Reaction to fire	Based on the decision 96/603/EC and its changes		A1 _{FL} /A1
Recycled content			60%

