

Formatech Magnum

Lightweight Slabs / Porcelain Concrete



Floor: DMAG 297 Cure Matt
Wall: DMAG 294 Cure Matt
Step: Formatech DFMT 04 Cast Matt

9 Colours / 1 Finish / 4 Sizes

Designed with Gensler and manufactured by Florim, Formatech reinterprets plaster, concrete and metal, capturing their depth and materiality in large-format porcelain slabs. The Magnum range minimises joints and creates a seamless visual effect, making it ideal for walls, floors and architectural surfaces where scale and continuity are key.

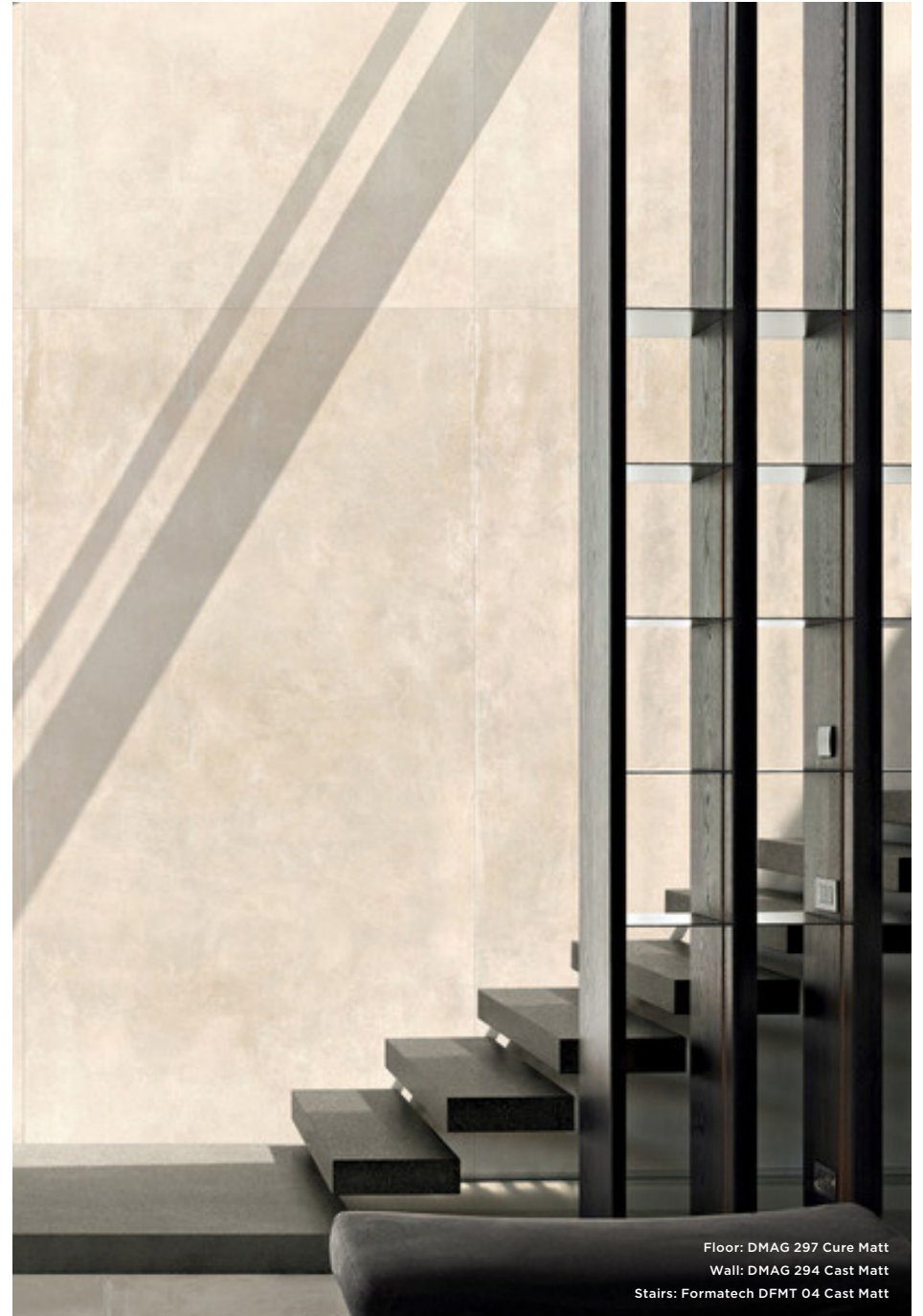
Product Design Consultant **Gensler**



Floor: DMAG 297 Cure Matt
Kitchen Island: DMAG 301 Forge & DMAG 302 Forge Matt



Wall: DMAG 294 Cure Matt



Floor: DMAG 297 Cure Matt
Wall: DMAG 294 Cast Matt
Stairs: Formatech DFMT 04 Cast Matt



DMAG 294 Cure



DMAG 295 Cure



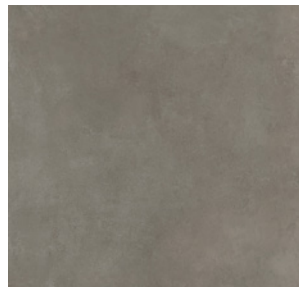
DMAG 296 Cure



DMAG 297 Cure



DMAG 298 Cure



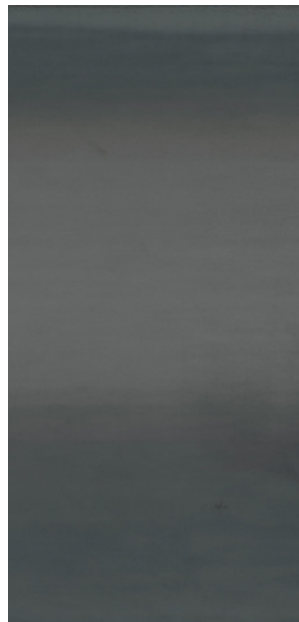
DMAG 299 Cure



DMAG 300 Forge

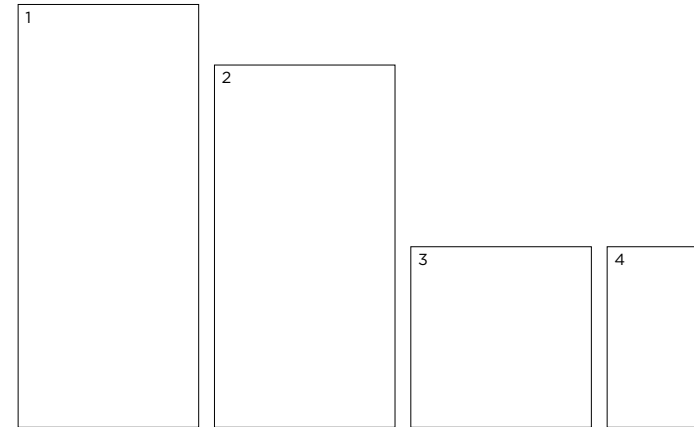


DMAG 301 Forge



DMAG 302 Forge

Sizes



	Size (mm)	Thickness	Finish	Colour Availability
1	2797 x 1197 (R)	6	Matt	All DMAG Forge colours
2	2397 x 1197 (R)	6	Matt	All DMAG Cure colours
3	1197 x 1197 (R)	6	Matt	All DMAG Cure colours
4	1197 x 597 (R)	6	Matt	All DMAG Cure colours

(R) Rectified size - square edge with bevel. Swatch colours may vary from original. Samples should be requested.

V2 Moderate - V3 High Shade Variation

DOMUS

service@domusgroup.com | t: 020 8481 9500 | domusgroup.com

V2 - Moderate Shade Variation



DMAG 294 Cure Matt



DMAG 297 Cure Matt



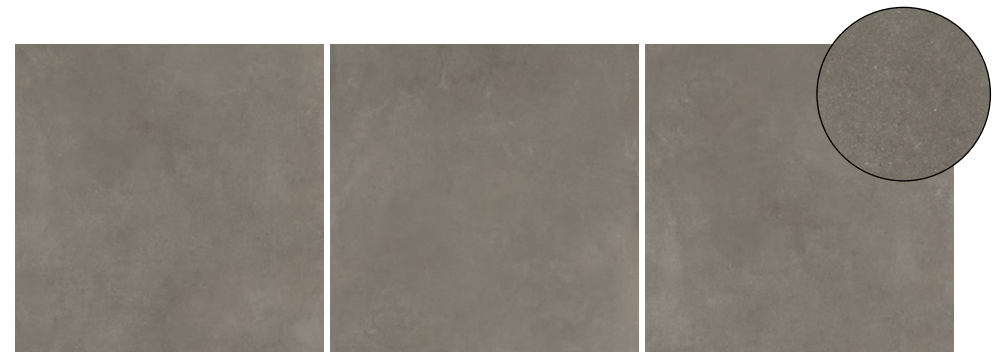
DMAG 295 Cure Matt



DMAG 298 Cure Matt



DMAG 296 Cure Matt



DMAG 299 Cure Matt

Formatech Magnum

Technical Data

Use: Floors & Walls
Product Code: DMAG

DIMENSION & SURFACE QUALITY

Technical Characteristics	Industry Standards	Requirement	Actual Value
Length & width	BS EN ISO 10545-2	± 0.60% (max. ± 2.0mm)	Conforms
Thickness	BS EN ISO 10545-2	± 5% (max. ± 0.5mm)	Conforms
Edge straightness	BS EN ISO 10545-2	± 0.50% (max. ± 1.5mm)	Conforms
Orthogonality (squareness)	BS EN ISO 10545-2	± 0.50% (max. ± 2.0mm)	Conforms
Planarity (flatness)	BS EN ISO 10545-2	± 0.50% (max. ± 2.0mm)	Conforms
Appearance	BS EN ISO 10545-2	> 95%	Conforms

SLIP RESISTANCE

Technical Characteristics	Industry Standards	Requirement	Finish
Areas with footwear	BS EN 16165 Annex B	R9 from 3° to 10° R10 from 10° to 19°	Forge Matt Cure Matt
Areas with bare feet	BS EN 16165 Annex A	B over 18° to 24°	Cure Matt
Slip resistance (Pendulum) Coefficient of friction	BS EN 16165	Test results upon request	

PRODUCT QUALITY & DURABILITY

Technical Characteristics	Industry Standards	Requirement	Actual Value
Water absorption	BS EN ISO 10545-3	≤ 0.5%	0.08% (Average value)
Modulus of rupture (bending strength)	BS EN ISO	≥ 35 N/mm ²	52 N/mm ² (Average value)
Breaking strength	BS EN ISO 10545-4	< 7.5mm ≥ 700 N	1350 N (Average value)
Resistance to deep abrasion (unglazed tiles)	BS EN ISO 10545-6	≤ 175 mm ³	140 mm ³ (Average value)
Thermal shock resistance	BS EN ISO 10545-9	No visible defects	Resistant
Frost resistance	BS EN ISO 10545-12	No surface alteration	Resistant
Chemical resistance: Low concentrations of acids & alkalis	BS EN ISO 10545-13	No visible defects	ULA
High concentrations of acids & alkalis	BS EN ISO 10545-13	No visible defects	UHA
Domestic chemicals & additives for swimming pools	BS EN ISO 10545-13	UB/GB min.	UA
Stain resistance	BS EN ISO 10545-14	Declared value - unglazed	Class 4
Reaction to fire	Based on the decision 96/603/EC and its changes	A1 _{FL} /A1	A1 _{FL} /A1
Recycled content			5% - DMAG 294, 295 & 296 16% - DMAG 297 - 302



All test results are based upon current test data provided by the manufacturer and are provided in good faith. Domus Group cannot be held responsible for any variation in the test data due to changes in manufacture or material characteristics. Errors & omissions excepted. Please refer to Domus Group Terms & Conditions of Sale. February 2026