

# Inclusion Classico

*Porcelain Terrazzo*



**8 Colours / 2 Finishes / 3 Sizes**

Inspired by the forces of nature, Inclusion Classico is an encounter between contemporary and modern settings. The porcelain stoneware flakes are produced under the skilful control of our laboratory technicians and deposited on the surface to create delicate surfaces with a tangible and three-dimensional effect.







Floor & Stairs: DGCNC 07 Matt



Floor: DGCNC 01, 02 & 03 Matt



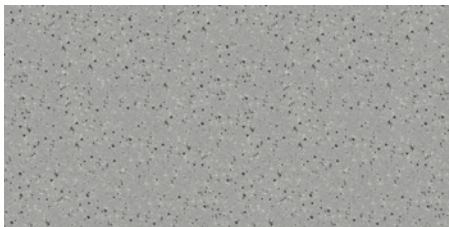
# Sizes



DGCNC 01



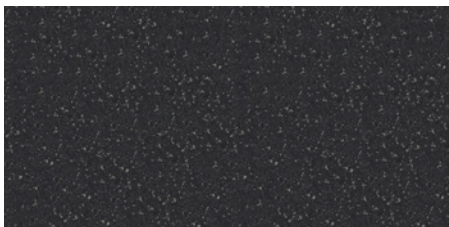
DGCNC 02



DGCNC 06



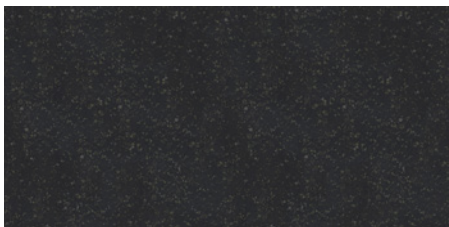
DGCNC 03



DGCNC 07



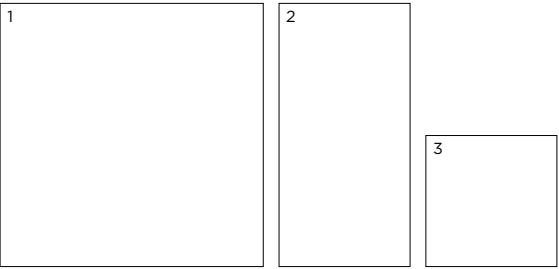
DGCNC 04



DGCNC 08



DGCNC 05



	Size (mm)	Thickness	Finish	Colour Availability
1	1190 x 1190 (R)	12	Matt	All colours
2	1190 x 594 (R)	12	Matt Honed	All colours All colours
3	594 x 594 (R)	12	Matt Honed	All colours All colours

(R) Rectified size – square edge with bevel. Swatch colours may vary from original. Samples should be requested. Special pieces shown on next page.

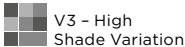


Counter: DGCNC 05 Matt  
Floor: DGCNC 01 & 05 Matt

# Special Pieces

	Size (mm)	Thickness	Finish	Colour Availability
1	Skirting 594 x 71	12	Matt	All colours
			Honed	All colours
2	Step Tread 1190 x 330 x 41	12	Matt	All colours
3	Step Tread 594 x 330 x 41	12	Matt	All colours

Swatch colours may vary from original. Samples should be requested.



V3 - High  
Shade Variation

**DOMUS**

# Inclusion Classico

## Technical Data

**Product Type:** Unglazed Porcelain (BS EN 14411 – Group Bla)

**Use:** Floors & Walls

**Product Code:** DGCNC

### DIMENSION & SURFACE QUALITY

Technical Characteristics	Industry Standards	Requirement	Actual Value
Length & width	BS EN ISO 10545-2	± 0.60% (max. ±2.0mm)	Conforms
Thickness	BS EN ISO 10545-2	± 5% (max. ±0.5mm)	Conforms
Edge straightness	BS EN ISO 10545-2	± 0.50% (max. ±1.5mm)	Conforms
Orthogonality (squareness)	BS EN ISO 10545-2	± 0.50% (max. ±2.0mm)	Conforms
Planarity (flatness)	BS EN ISO 10545-2	± 0.50% (max. ±2.0mm)	Conforms
Appearance	BS EN ISO 10545-2	> 95%	Conforms

### SLIP RESISTANCE

Technical Characteristics	Industry Standards	Requirement	Finish
Areas with footwear	BS EN ISO 10545-17 (DIN 51130)	R10 from 10° to 19°	Matt
Areas with bare feet	DIN 51097	B over 18° to 24°	Matt (average value)
Slip resistance Coefficient of friction	BS 7976-2	Test results upon request	

All test results are based upon current test data provided by the manufacturer and are provided in good faith. Domus Group cannot be held responsible for any variation in the test data due to changes in manufacture or material characteristics. Errors & omissions excepted. Please refer to Domus Group Terms & Conditions of Sale.  
December 2021

### PRODUCT QUALITY & DURABILITY

Technical Characteristics	Industry Standards	Requirement	Actual Value
Water absorption	BS EN ISO 10545-3	≤ 0.5%	≤ 0.1% (typical value)
Modulus of rupture (bending strength)	BS EN ISO 10545-4	≥ 35 N/mm²	≥ 40 N/mm² (typical value)
Breaking strength	BS EN ISO 10545-4	≥ 1300 N	≥ 4000 N (typical value)
Resistance to deep abrasion (of unglazed tiles)	BS EN ISO 10545-6	≤175mm³	≤145 mm³ (typical value)
Linear thermal expansion coefficient	BS EN ISO 10545-8	Declared value	≤ 7 x 10 <sup>-6</sup> / °C <sup>-1</sup> (typical value)
Thermal shock resistance	BS EN ISO 10545-9	No visible defects	Resistant
Frost resistance	BS EN ISO 10545-12	No surface alteration	Resistant
Chemical resistance: Low concentrations of acids & alkalis	BS EN ISO 10545-13	No visible defects	ULA-ULB
Domestic chemicals & additives for swimming pools	BS EN ISO 10545-13	UB min.	UA
Stain resistance	BS EN ISO 10545-14	Declared value	Class 5
Reaction to fire	Based on the decision 96/603/EC and its changes		A1 <sub>FL</sub> /A1
Recycled content			41%



**DOMUS**

service@domusgroup.com | t: 020 8481 9500 | domusgroup.com