

# Limestone Slim

---

*Lightweight Slabs / Porcelain Stone*



**4 Colours / 1 Finish / 2 Sizes**

Limestone Slim is a range of lightweight porcelain slabs in extra-large sizes up to 3000mm. Produced with cutting-edge ink-jet ceramic technology, its level of detail and tonal variation is exceptional. Refer to Limestone and Limestone 20mm for other ranges in the series.



# Sizes



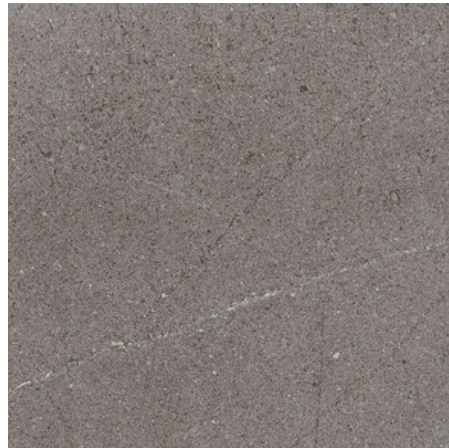
DCKP 65



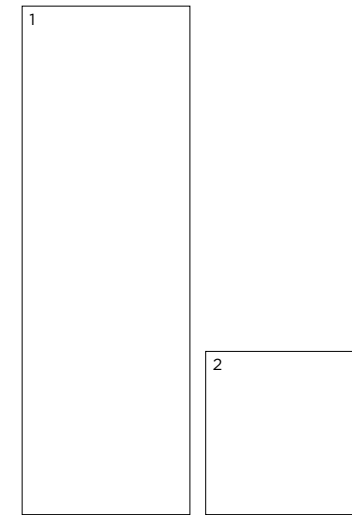
DCKP 66



DCKP 67



DCKP 68



	Size (mm)	Thickness	Finish	Colour Availability
1	3000 x 997	5.5	Natural	All colours
2	997 x 997	5.5	Natural	All colours

Swatch colours may vary from original. Samples should be requested.

# Limestone Slim

## Technical Data

**Product Type:** Unglazed Porcelain (BS EN 14411 – Group Bla) reinforced with fibreglass mesh-backing

**Use:** Walls & Floors

*(Not suitable for heavy duty areas, e.g. trolleys with hard wheels)*

**Product Code:** DCKP

## DIMENSION & SURFACE QUALITY

Technical Characteristics	Industry Standards	Requirement	Actual Value
Length & width	BS EN ISO 10545-2	± 0.60% (max. ± 2.0mm)	Conforms
Thickness	BS EN ISO 10545-2	± 5% (max. ± 0.5mm)	Conforms
Edge straightness	BS EN ISO 10545-2	± 0.50% (max. ± 1.5mm)	Conforms
Orthogonality (squareness)	BS EN ISO 10545-2	± 0.50% (max. ± 2.0mm)	Conforms
Planarity (flatness)	BS EN ISO 10545-2	± 0.50% (max. ± 2.0mm)	Conforms
Appearance	BS EN ISO 10545-2	> 95%	Conforms

## SLIP RESISTANCE

Technical Characteristics	Industry Standards	Requirement	Finish
Areas with footwear	BS EN ISO 10545-17 (DIN 51130)	R10 from 10° to 19°	Natural
Areas with bare feet	DIN 51097	B over 18° to 24°	Natural
Slip resistance Coefficient of friction	BS 7976-2	Test results upon request	

## PRODUCT QUALITY & DURABILITY

Technical Characteristics	Industry Standards	Requirement	Actual Value
Water absorption	BS EN ISO 10545-3	≤ 0.5%	0.1% (average value)
Modulus of rupture (bending strength)	BS EN ISO 10545-4	≥ 35 N/mm <sup>2</sup>	50 N/mm <sup>2</sup> (average value)
Breaking strength	BS EN ISO 10545-4	< 7.5mm ≥ 700 N	Conforms
Resistance to deep abrasion (unglazed tiles)	BS EN ISO 10545-6	≤ 175 mm <sup>3</sup>	Conforms
Linear thermal expansion coefficient	BS EN ISO 10545-8	Declared value	≤ 7 x 10 <sup>-6</sup> °C <sup>-1</sup> (average value)
Thermal shock resistance	BS EN ISO 10545-9	No visible defects	Resistant
Frost resistance	BS EN ISO 10545-12	No surface alteration	Resistant
Chemical resistance: Low concentrations of acids & alkalis	BS EN ISO 10545-13	No visible defects	ULA
High concentrations of acids & alkalis	BS EN ISO 10545-13	No visible defects	UHA
Domestic chemicals & additives for swimming pools	BS EN ISO 10545-13	UB min.	Conforms
Stain resistance	BS EN ISO 10545-14	Declared value	Class 5
Reaction to fire	EN 13823 EN 9239-1	CPR (EU) 305/2011, 2000/147/EC, EN 13501-1	Class A2-s1, d0 (wall) Class A2fl-s1 (floor)
Recycled content			0%

