

Otta Wall

Ceramic Design



Wall: DAGW 03 Matt

4 Colours / 1 Finish / 2 Sizes / 2 Décors

Otta Wall combines advanced technology with a highly meticulous, refined design. Inspired by pure Italian Sassi cement, these ceramic tiles stand out due to their oxide inlays and the subtle reliefs that bestow the characteristic industrial look of cement. Refer to Otta for porcelain tiles with varying thickness options.



Left Wall: DAGW 04 Matt

Right Wall: DAGW 04 Square Décor Matt



Left Wall: DAGW 02 Matt
Right Wall: DAGW 02 Geo Décor Matt



Wall: DAGW 01 Matt
Counter: DAGW 04 Geo Décor Matt



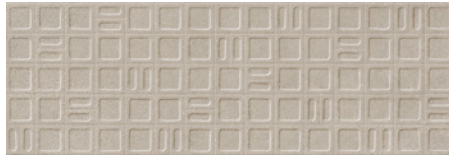
DAGW 01



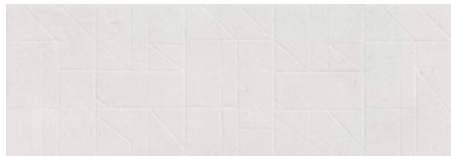
DAGW 03



DAGW 01 Square Décor



DAGW 03 Square Décor



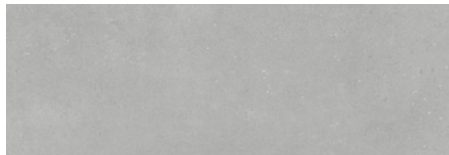
DAGW 01 Geo Décor



DAGW 03 Geo Décor



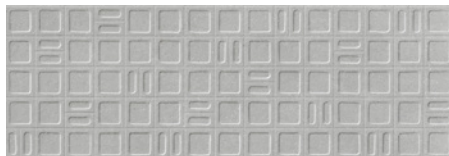
DAGW 02



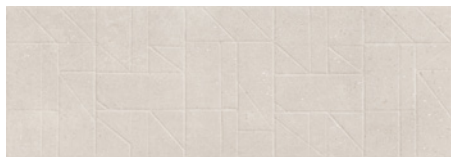
DAGW 04



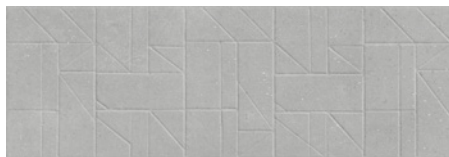
DAGW 02 Square Décor



DAGW 04 Square Décor

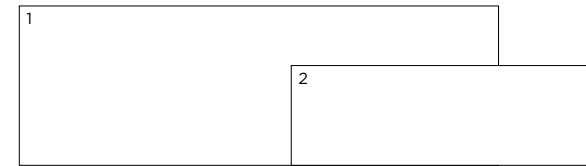


DAGW 02 Geo Décor



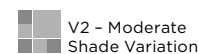
DAGW 04 Geo Décor

Sizes



	Size (mm)	Thickness	Finish	Colour Availability
1	1200 x 400 (R)	10.8	Matt	All colours
	Square Décor 1200 x 400 (R)	10.8	Matt	All colours
2	753 x 251 (N)	8.7	Matt	All colours
	Geo Décor 753 x 251 (N)	8.7	Matt	All colours

(R) Rectified size - square edge with bevel. (N) Nominal size - pressed edge. For wall use only. Swatch colours may vary from original. Samples should be requested.



Otta Wall

Technical Data

Product Type: Glazed Ceramic (BS EN 14411 – Group BIII)

Use: Walls (Internal only)

Product Code: DAGW

Sizes: 1200 x 400 x 10.8 mm (rect.) / 753 x 251 x 8.7 mm (non-rect.)*

DIMENSION & SURFACE QUALITY

* Please be aware that the non-rectified tile is produced in five calibres, which vary slightly from the nominal size, details below.

Calibre 1: 751 x 250.2 mm (uncommon calibre)
 Calibre 2: 752 x 250.6 mm
 Calibre 3: 753 x 251 mm
 Calibre 4: 754 x 251.4 mm
 Calibre 5: 755 x 251.8 mm (uncommon calibre)

Where there is a requirement for a specific calibre, please ensure this is quoted on all correspondence.
 Where a specific calibre is not requested, a random calibre will be assigned to all orders.
 Please ensure all tiles from the same calibre are used within the same project.

Dimensional tolerances for all sizes as below

Technical Characteristics	Industry Standards	Requirement	Actual Value
Length & width	BS EN ISO 10545-2	± 0.50% (max. ± 2.0mm)	Conforms
Thickness	BS EN ISO 10545-2	± 10% (max. ± 0.5mm)	Conforms
Edge straightness	BS EN ISO 10545-2	± 0.30% (max. ± 1.5mm)	Conforms
Orthogonality (squareness)	BS EN ISO 10545-2	± 0.50% (max. ± 2.0mm)	Conforms
Planarity (flatness): Centre curvature	BS EN ISO 10545-2	+ 0.5% (max. + 2.0mm) - 0.3% (max. - 1.5mm)	Conforms
Edge curvature	BS EN ISO 10545-2	+ 0.5% (max. + 2.0mm) - 0.3% (max. - 1.5mm)	Conforms
Warpage	BS EN ISO 10545-2	± 0.5% (max. ± 2.0mm)	Conforms
Appearance	BS EN ISO 10545-2	> 95%	Conforms

All test results are based upon current test data provided by the manufacturer and are provided in good faith. Domus Group cannot be held responsible for any variation in the test data due to changes in manufacture or material characteristics. Errors & omissions excepted. Please refer to Domus Group Terms & Conditions of Sale. February 2022

PRODUCT QUALITY & DURABILITY

Technical Characteristics	Industry Standards	Requirement	Actual Value
Water absorption	BS EN ISO 10545-3	> 10%	Conforms
Modulus of rupture (bending strength)	BS EN ISO 10545-4	≥ 12 N/mm ²	Conforms
Breaking strength	BS EN ISO 10545-4	≥ 600 N	Conforms
Thermal shock resistance	BS EN ISO 10545-9	No visible defects	Resistant
Crazing resistance	BS EN ISO 10545-11	No visible defects	Resistant
Chemical resistance: Low concentrations of acids & alkalis	BS EN ISO 10545-13	No visible defects	GLB min.
High concentrations of acids & alkalis	BS EN ISO 10545-13	No visible defects	GHB min.
Domestic chemicals & additives for swimming pools	BS EN ISO 10545-13	GB min.	Conforms
Stain resistance	BS EN ISO 10545-14	Min. Class 3	Conforms
Reaction to fire	Based on the decision 96/603/EC and its changes		A1
Recycled content			29%



DOMUS

service@domusgroup.com | t: 020 8481 9500 | domusgroup.com