

Essential Mood

Porcelain Concrete



Floor: DCDEM 07 Matt

9 Colours / 2 Finishes / 2 Sizes

Essential Mood presents a blend of earthy and dusty tones evocative of an easy-going lifestyle that embraces sustainability and a more mindful approach to interior design. This porcelain tile range is part of Florim's 'CarbonZero' selection of Climate-Positive surfaces, which reduce the amount of CO₂ in the atmosphere.



Wall: DCDEM 04 Matt
Floor: DCDEM 09 Matt



Wall: DCDEM 02 Matt
Floor: DCDEM 03 Matt



Wall: DCDEM 01 Matt
Sink: DCDEM 07 Matt

Sizes



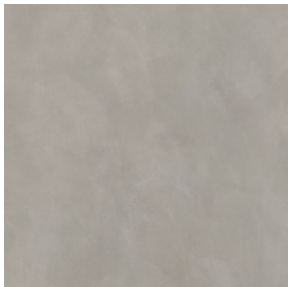
DCDEM 01



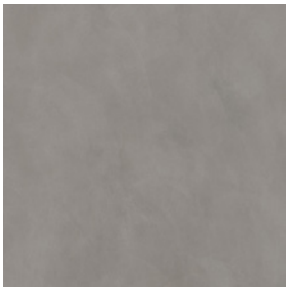
DCDEM 02



DCDEM 03



DCDEM 04



DCDEM 05



DCDEM 06



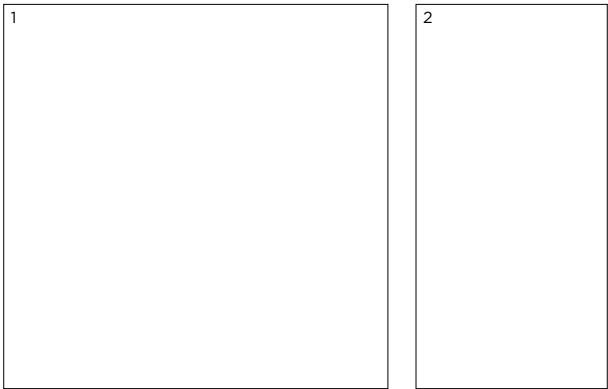
DCDEM 07



DCDEM 08



DCDEM 09



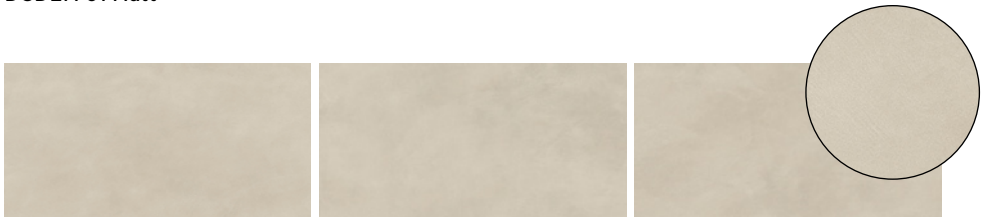
	Size (mm)	Thickness	Finish	Colour Availability
1	1197 x 1197 (R)	9	Matt	All colours
2	1197 x 597 (R)	9	Matt Natural Grip	All colours DCDEM 01, 02, 04 & 05
	Plinth Skirting 1197 x 46	9	Matt	All colours

(R) Rectified size – square edge with bevel. Swatch colours may vary from original. Samples should be requested.

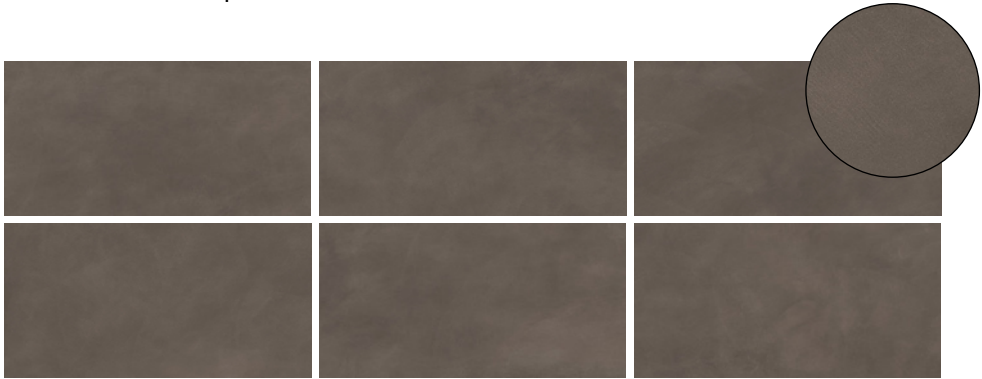
V2 - Moderate Shade Variation



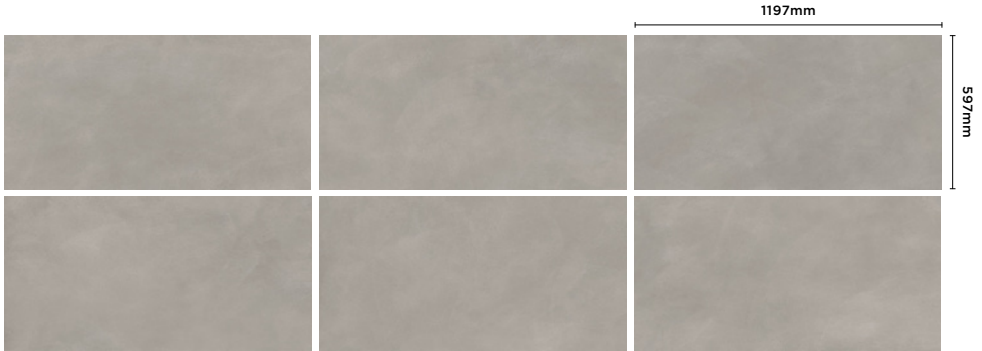
DCDEM 01 Matt



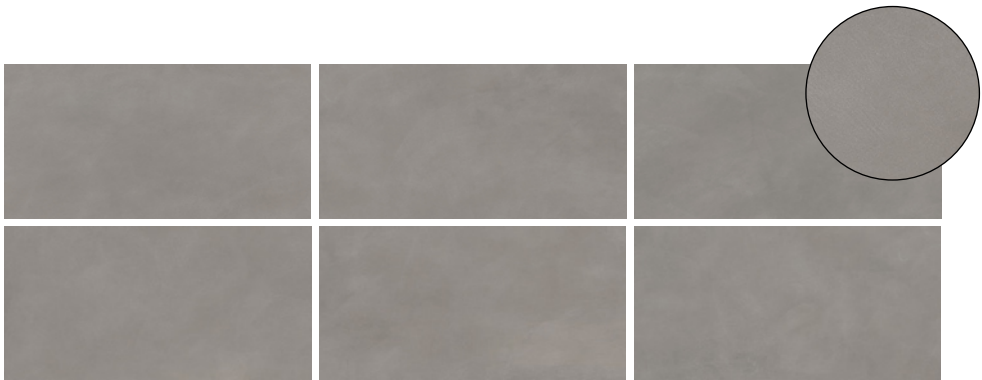
DCDEM 02 Natural Grip



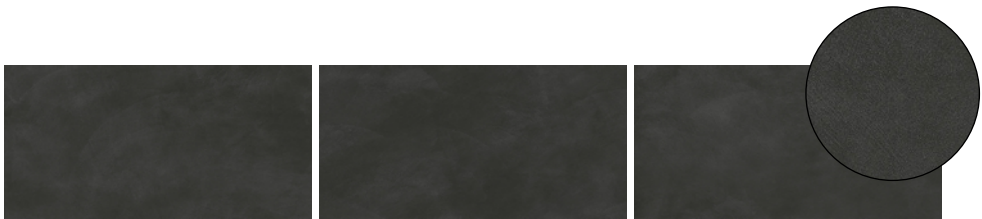
DCDEM 03 Matt



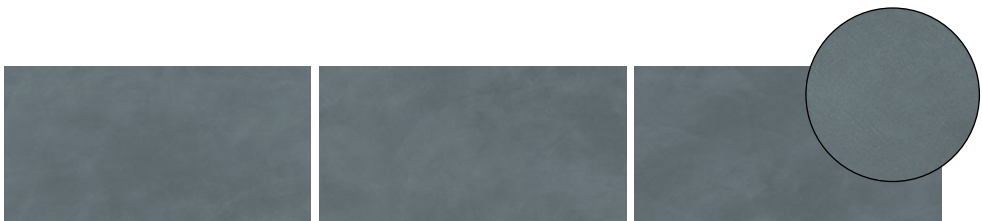
DCDEM 04 Natural Grip



DCDEM 05 Natural Grip



DCDEM 06 Matt



DCDEM 07 Matt



DCDEM 08 Matt



DCDEM 09 Matt

Essential Mood

Technical Data

Product Type: Unglazed Porcelain (BS EN 14411 – Group BIa)

Use: Floors & Walls

Product Code: DCDEM

DIMENSION & SURFACE QUALITY

Technical Characteristics	Industry Standards	Requirement	Actual Value
Length & width	BS EN ISO 10545-2	± 0.60% (max. ± 2.0mm)	Conforms
Thickness	BS EN ISO 10545-2	± 5% (max. ± 0.5mm)	Conforms
Edge straightness	BS EN ISO 10545-2	± 0.50% (max. ± 1.5mm)	Conforms
Orthogonality (squareness)	BS EN ISO 10545-2	± 0.50% (max. ± 2.0mm)	Conforms
Planarity (flatness)	BS EN ISO 10545-2	± 0.50% (max. ± 2.0mm)	Conforms
Appearance	BS EN ISO 10545-2	> 95%	Conforms

SLIP RESISTANCE

Technical Characteristics	Industry Standards	Requirement	Finish
Areas with footwear	BS EN 16165 (Annex B)	R10 from 10° to 19° R11 from 19° to 27°	Matt Grip
Areas with bare feet	BS EN 16165 (Annex A)	B over 18° to 24°	Matt
Slip resistance (Pendulum) Coefficient of friction	BS EN 16165 (Annex C)	Test results upon request	

PRODUCT QUALITY & DURABILITY

Technical Characteristics	Industry Standards	Requirement	Actual Value
Water absorption	BS EN ISO 10545-3	≤ 0.5%	0.08% (Typical Value)
Modulus of rupture (bending strength)	BS EN ISO 10545-4	≥ 35 N/mm ²	50 N/mm ² (Typical value)
Breaking strength	BS EN ISO 10545-4	≥ 7.5mm ≥ 1300 N	2200 N (Typical value)
Resistance to deep abrasion (unglazed tiles)	BS EN ISO 10545-6	≤ 175 mm ³	140 mm ³ (Typical value)
Thermal shock resistance	BS EN ISO 10545-9	No visible defects	Resistant
Frost resistance	BS EN ISO 10545-12	No surface alteration	Resistant
Chemical resistance: Low concentrations of acids & alkalis	BS EN ISO 10545-13	No visible defects	ULA
Domestic chemicals & additives for swimming pools	BS EN ISO 10545-13	UB/GB min.	UA
Stain resistance	BS EN ISO 10545-14	Declared value - unglazed	Class 4-5
Reaction to fire	Based on the decision 96/603/EC and its changes	A1 _{FL} /A1	A1 _{FL} /A1
Recycled content			5.8% - DCDEM 01 11% - DCDEM 02 - 09



All test results are based upon current test data provided by the manufacturer and are provided in good faith. Domus Group cannot be held responsible for any variation in the test data due to changes in manufacture or material characteristics. Errors & omissions excepted. Please refer to Domus Group Terms & Conditions of Sale. September 2024