

EMERGING TILE TRENDS 2017

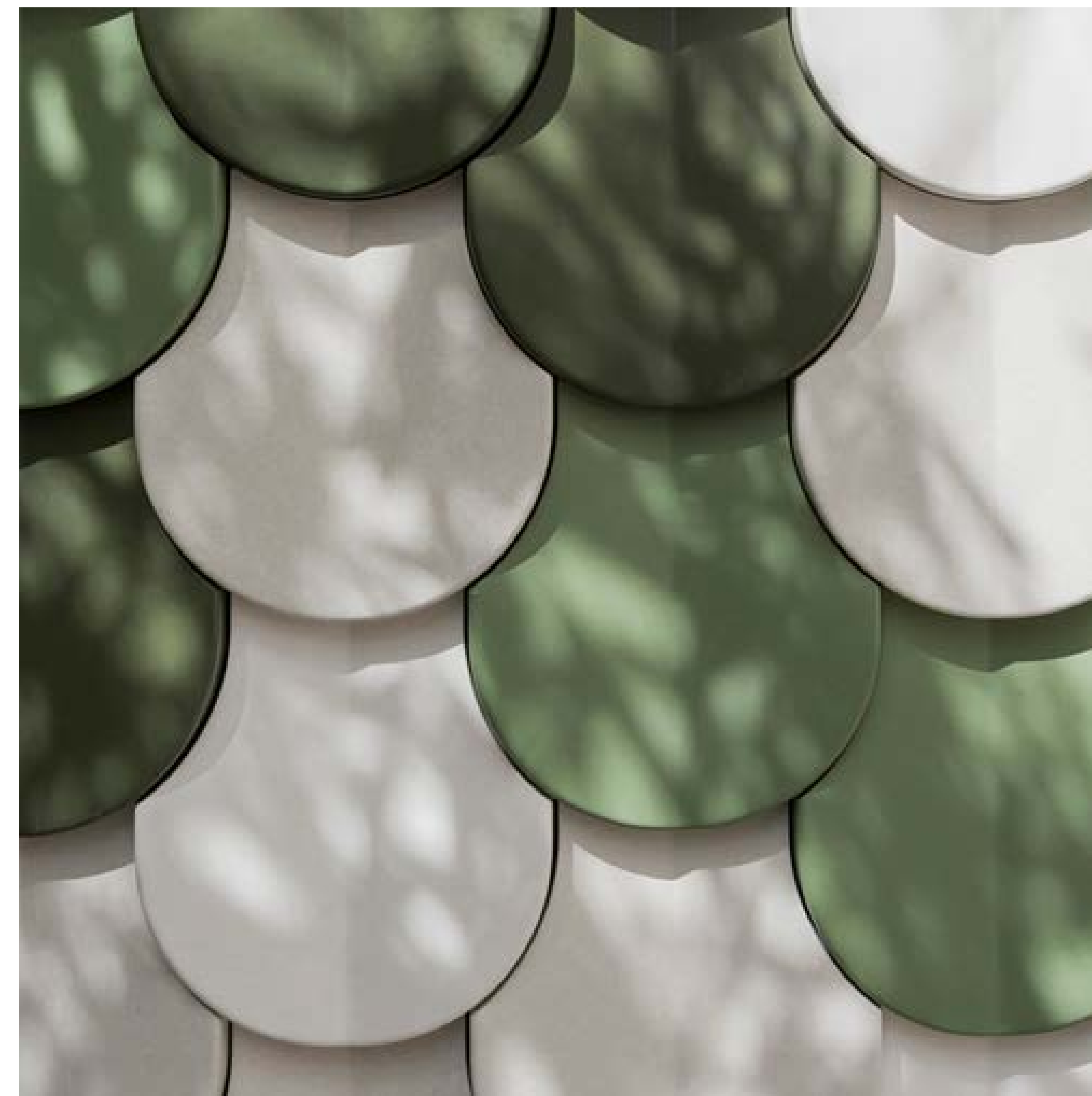
1

“Over the coming year we will see interior tastes become more personal. Confidence has grown in the use of colour, and design choices are becoming more eclectic. There are now many designer sanitary ware options in a wide variety of colours, which is a reflection of how tastes are changing. Ultramarine marks the pinnacle of the blue period, and green has made the transition from botanical prints to tiles. Neutrals are gradually becoming warmer, so much so that brown has begun to make a come-back. Uneven surface textures reflect a hand-crafted individuality, while shapes appear less uniform. Now is the time to really indulge your senses and reinvigorate your interiors.”

- Jess Piddock, *Domus In-house Interior Designer*



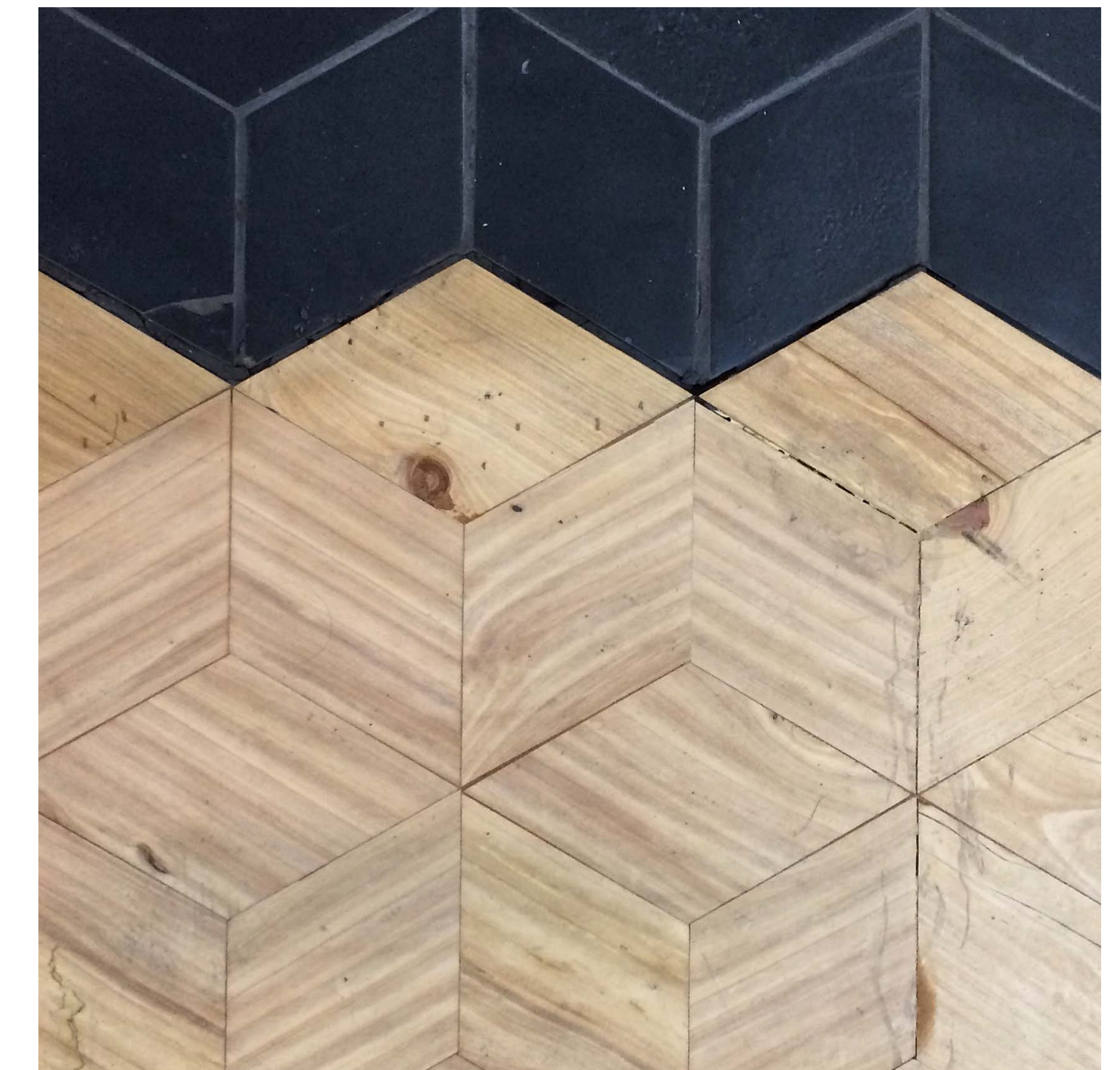
Puzzle



Shingle



Smink Things



New Terracotta

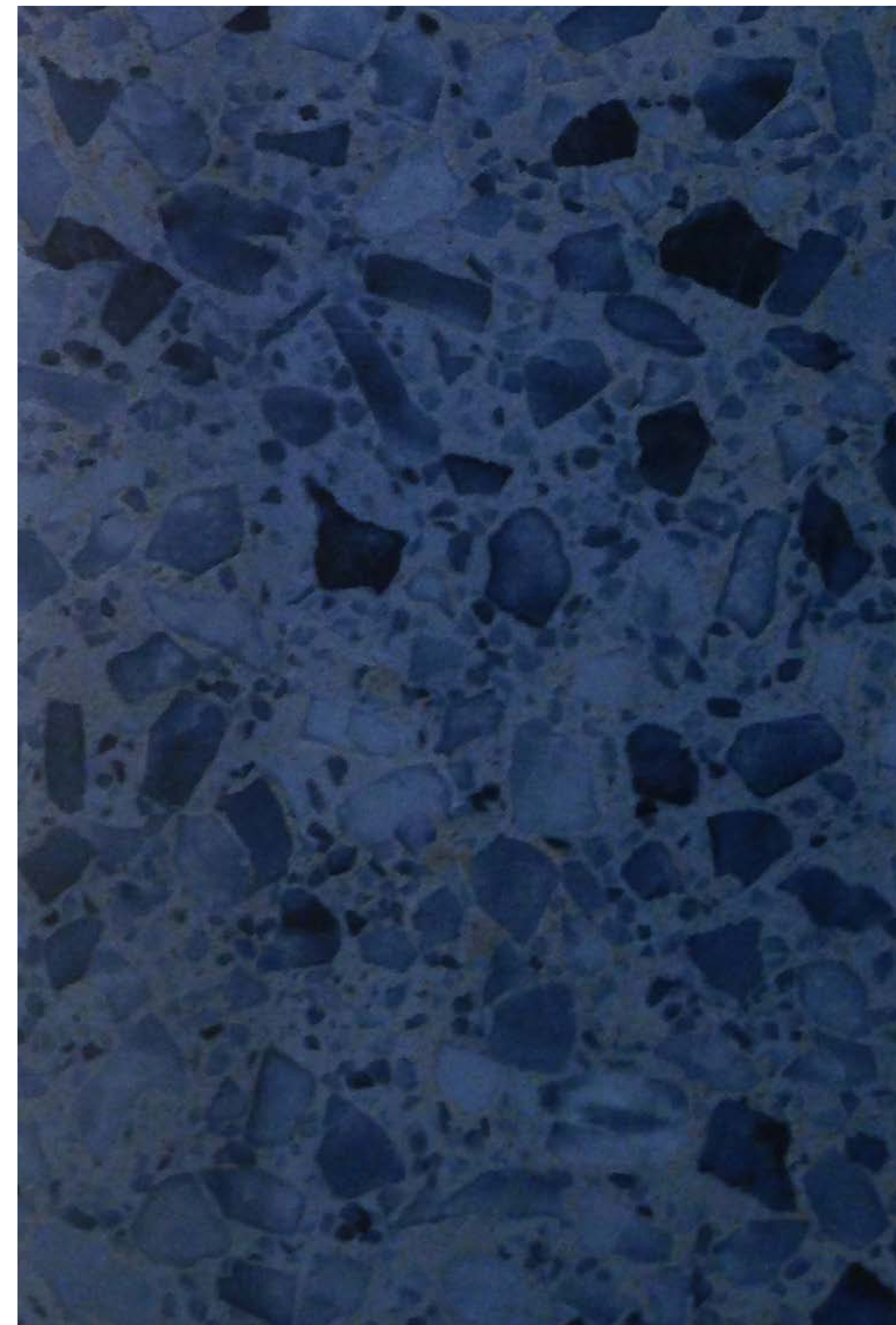
THE BLUE PERIOD

2

Rich blues and teals have become familiar in paints and soft furnishings, and these will become more prevalent in hard finishes. This Blue Period is evolving to welcome bolder, ultramarine too. Ultramarine is an excellent accent colour, whereas deeper Prussian blue works best in abundance; both combine beautifully with soft greys and marble finishes.



Puzzle



Sicis Marmi



Le Courbusier



Puzzle

GLORIOUS GREEN

Green can create the perfect escapist ambience, transporting you away from the mayhem of modern life. Green surfaces link well with the long standing trend for open plan, indoor/outdoor interiors, with kitchen dining spaces typically being opened up onto a terrace with BiFold doors. ‘Greenery’ is Pantone’s colour of the year for 2017, which is a zesty, fresh tone, but there are a myriad of gorgeous green shades that can all help to really bring the outdoors in.



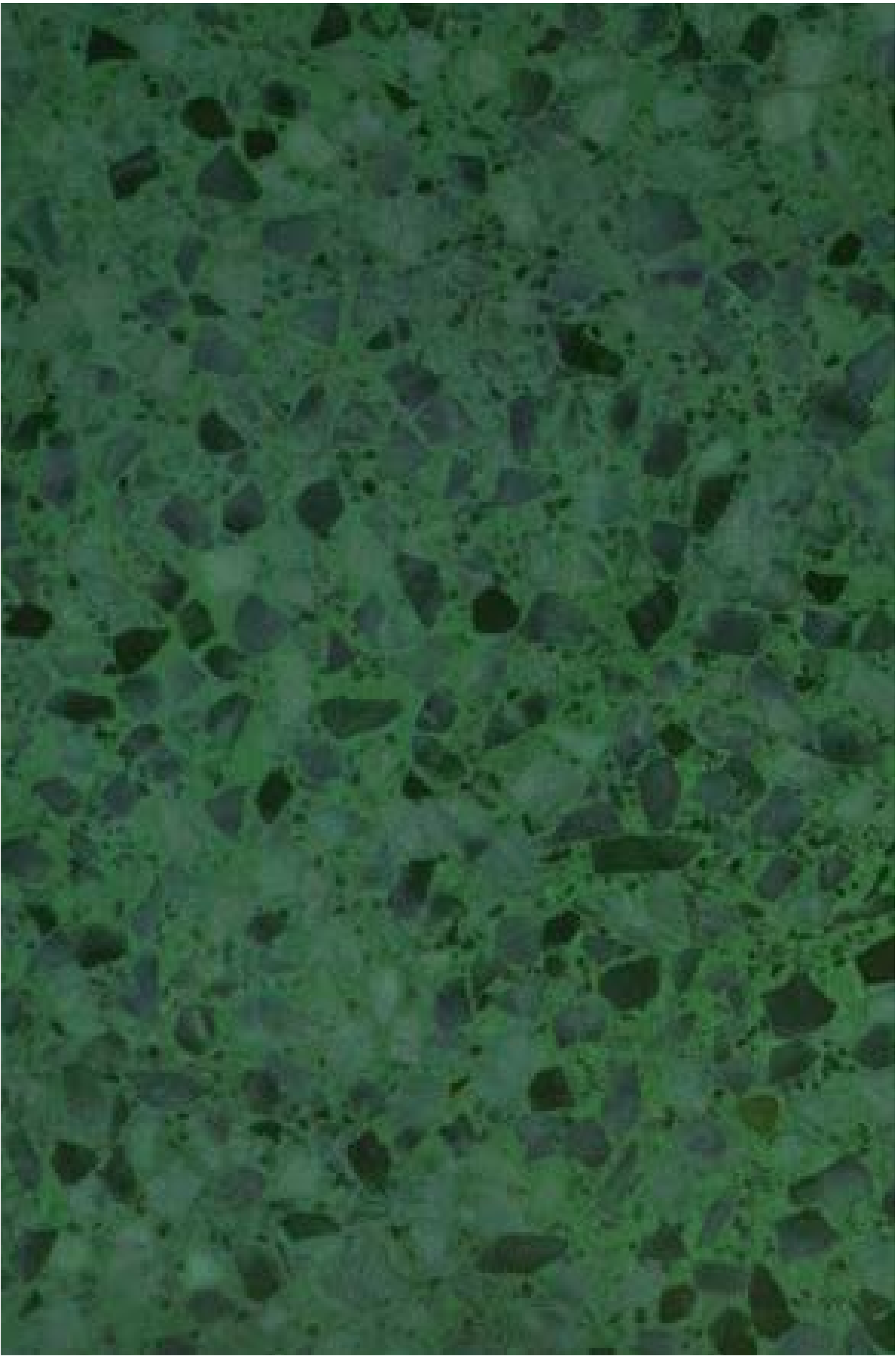
Cementiles



Sicis



Cementiles



Fluorite

Grey is still the most popular neutral colour, but it's been gradually getting warmer, transitioning to greige and taupe. So it shouldn't come as a complete surprise to see the resurgence of brown and terracotta tones. We're so familiar with grey now, that a sophisticated brown scheme appears rather refreshing. These earthy shades also resonate with the lifestyle trend for natural and organic styles.



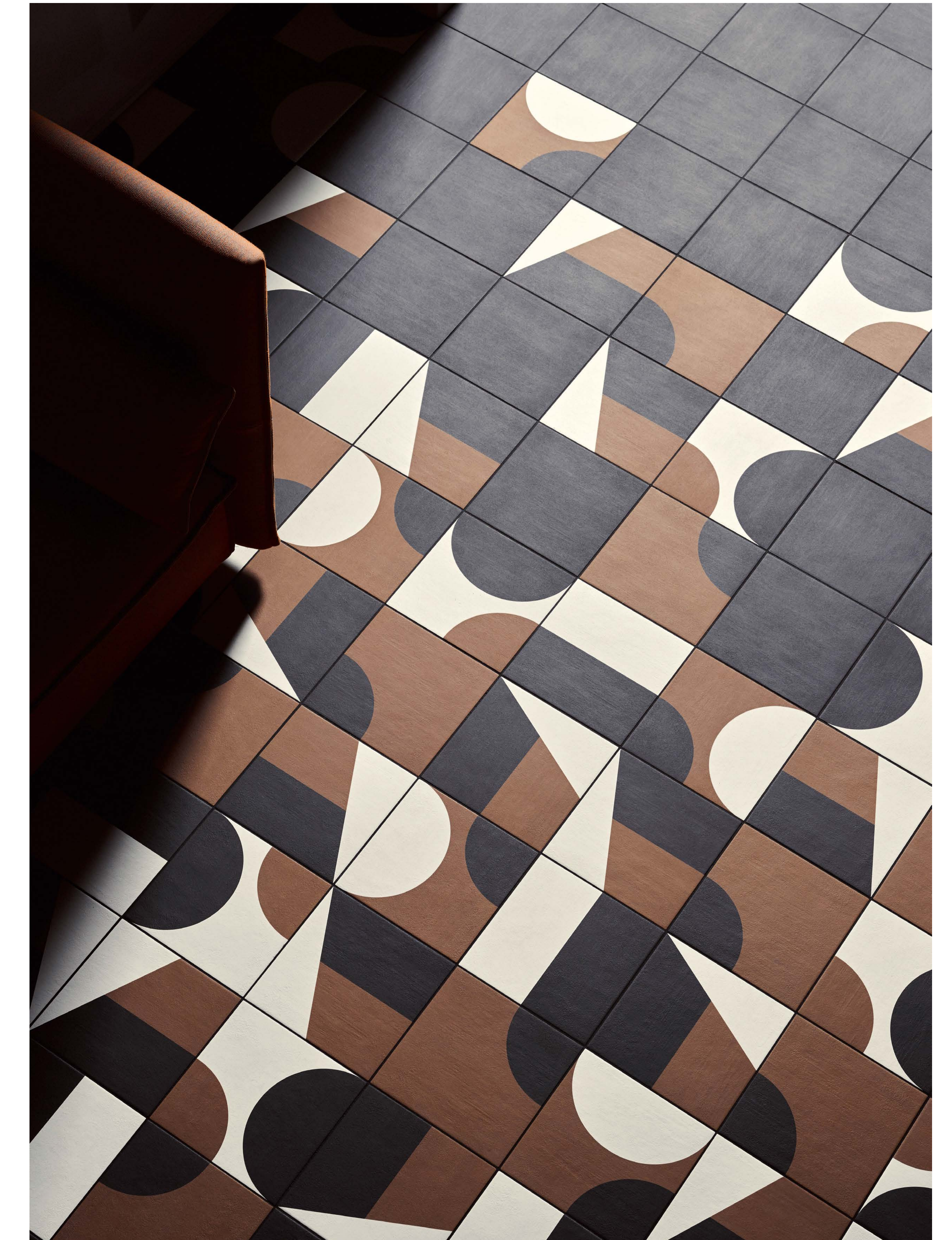
Gris Du Marais



Domus Wood: Dark Spirit



Domus Wood



Puzzle

The Danish concept of 'hygge' has caught the imagination of the public in the UK, and the way it's been interpreted by the media relates to creating a simple, cosy environment, a refuge both physically and psychologically. In terms of interior design, the 'hygge' philosophy translates into tactile, raw looking, or reclaimed finishes. Rustic, natural looking materials celebrate imperfections and irregularities signifying a human element.



Domus Reclaimed Wood



Carriere Du Kronos



La Roche



Modello #5

WOVEN

6

Woven materials such as rattan and wicker have become popular in product and furniture design recently, and these styles are now being seen on tiles and wood. From surface printed wicker chair patterns, to linen imprints, dog tooth mosaics and sculptural 3D surfaces, this trend is all about pattern and texture.



Opus Romano



Cementiles



I Tessutti



Weave

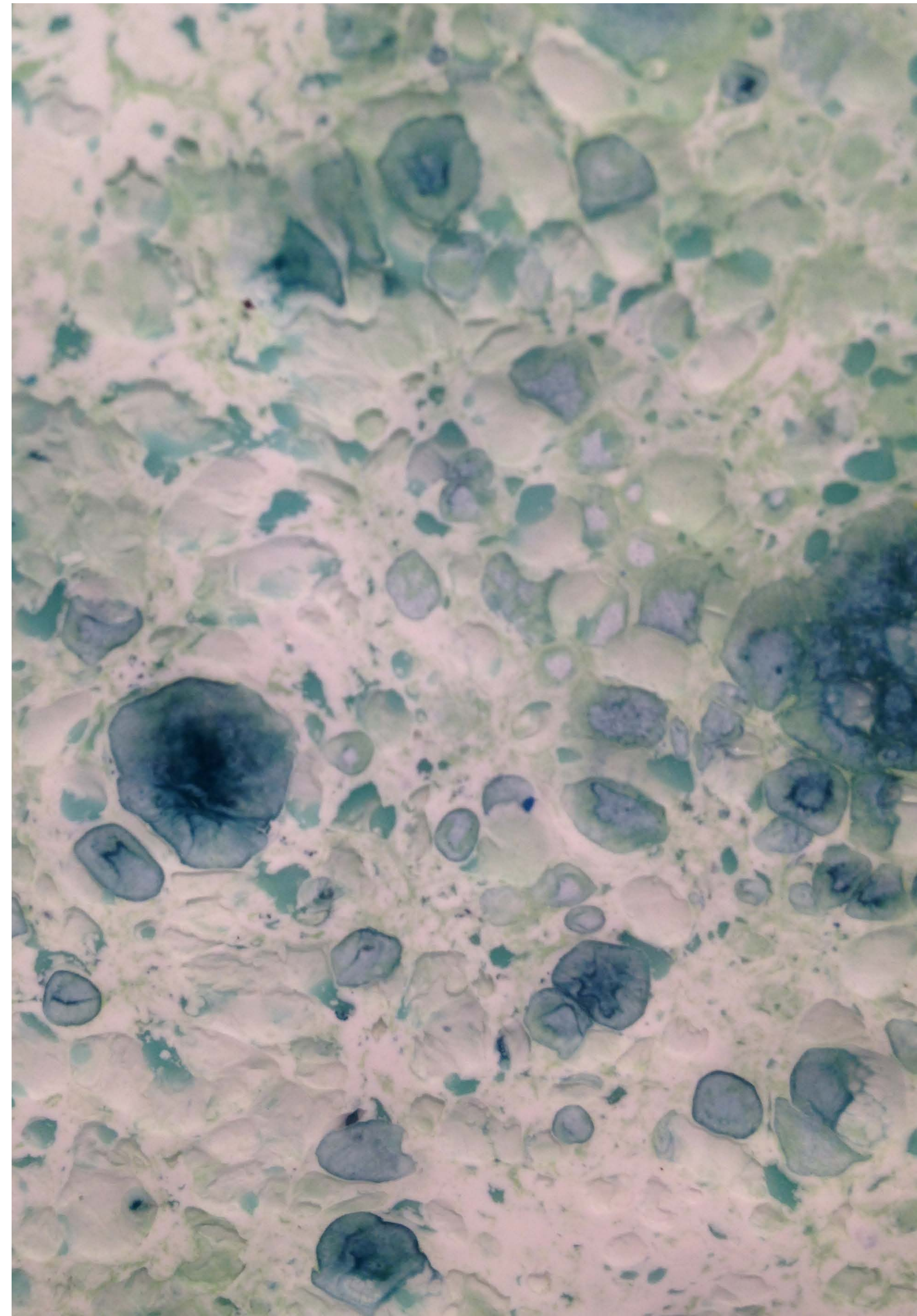
PAINT EFFECTS

7

From ombré to Abstract Expressionist, there's a wide variety of approaches to paint effects. Painterly marks are being expressed in contemporary tile designs in larger formats as well as on a smaller handmade scale. These tactile markings can create an atmosphere instantly; it's the perfect trend for that personal touch.



Argilla



Peccioli



Smink Things



Smink Things

OPULENT STONES

8

The use of opulent natural stones has long been associated with a traditional interior design style, but they are starting to be used in contemporary, cutting edge interiors. As onyx and coloured marbles become fashionable, expect to see more opulent markings and less minimal looking marbles. Whereas previously the appearance of opulent stones were often calmed with plainer looking counterparts, with this modern eclectic look, more is more.



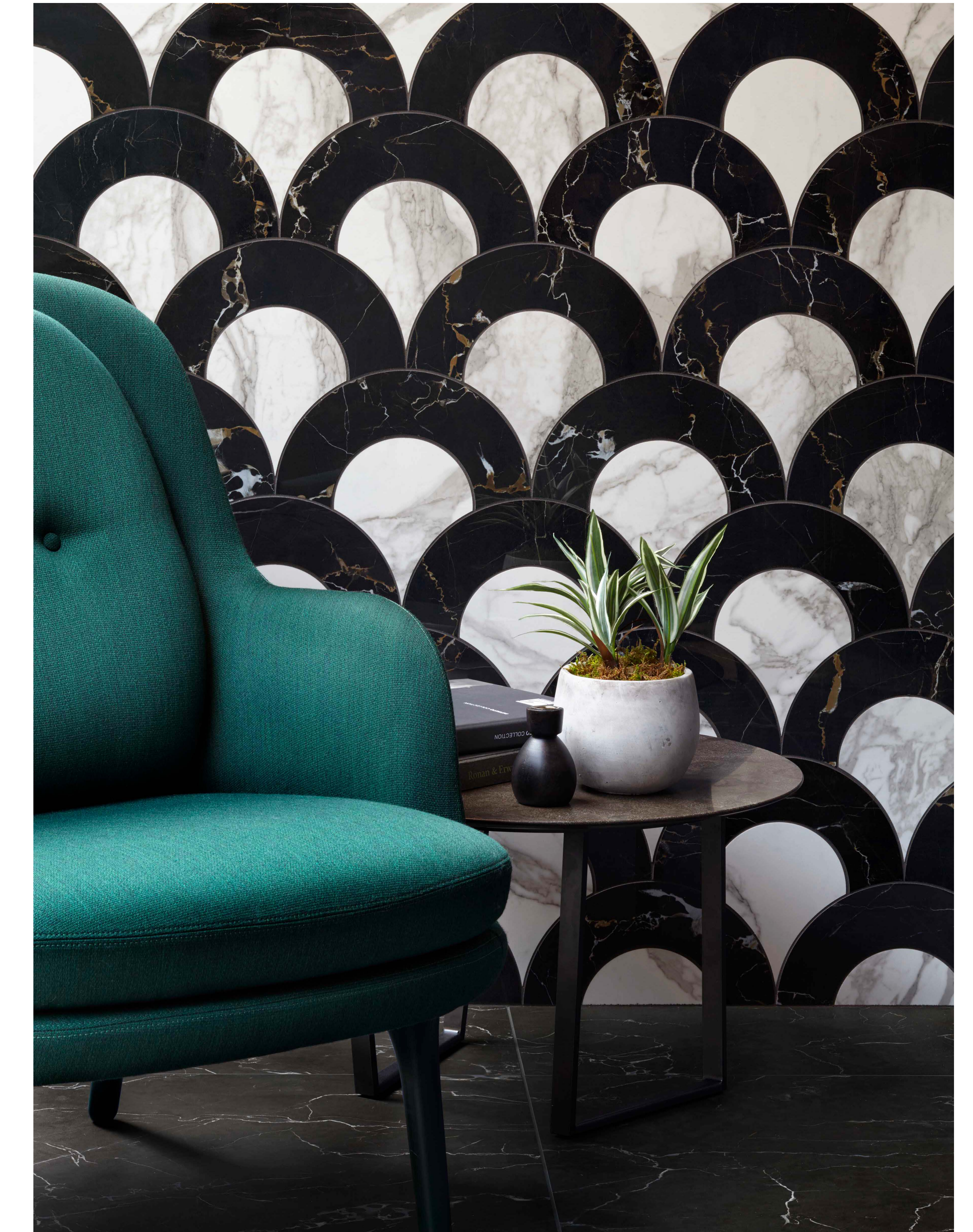
I Marmi



Abalone Green



I Classici

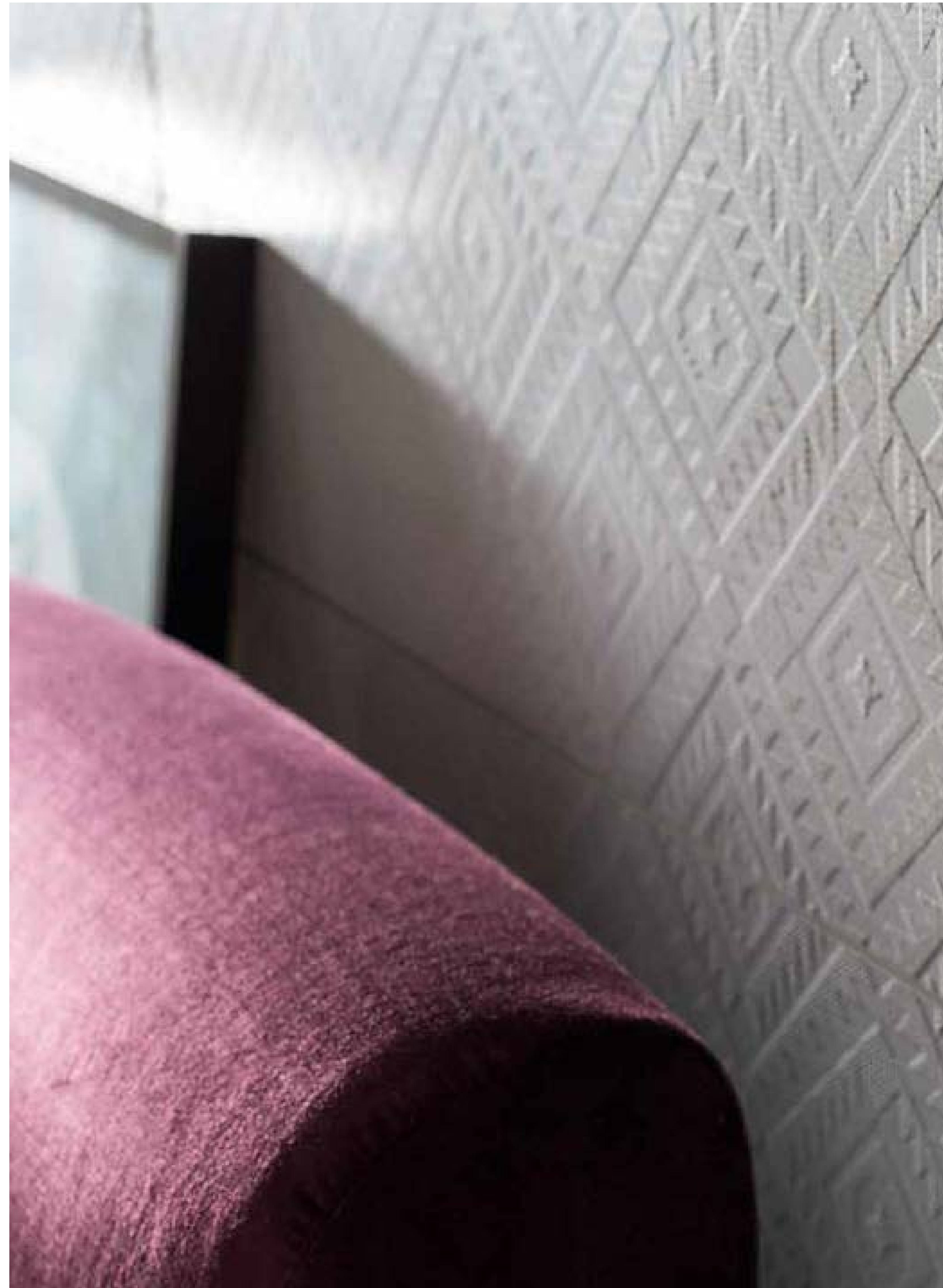


Modello #1

EMBOSSED

9

The trend for embossed tile finishes can be linked to the opulent trend for velvet and quilting. This presents another way of expressing pattern and surface design. It offers a more subtle alternative to creating a tactile look as it can be achieved in a single colour.



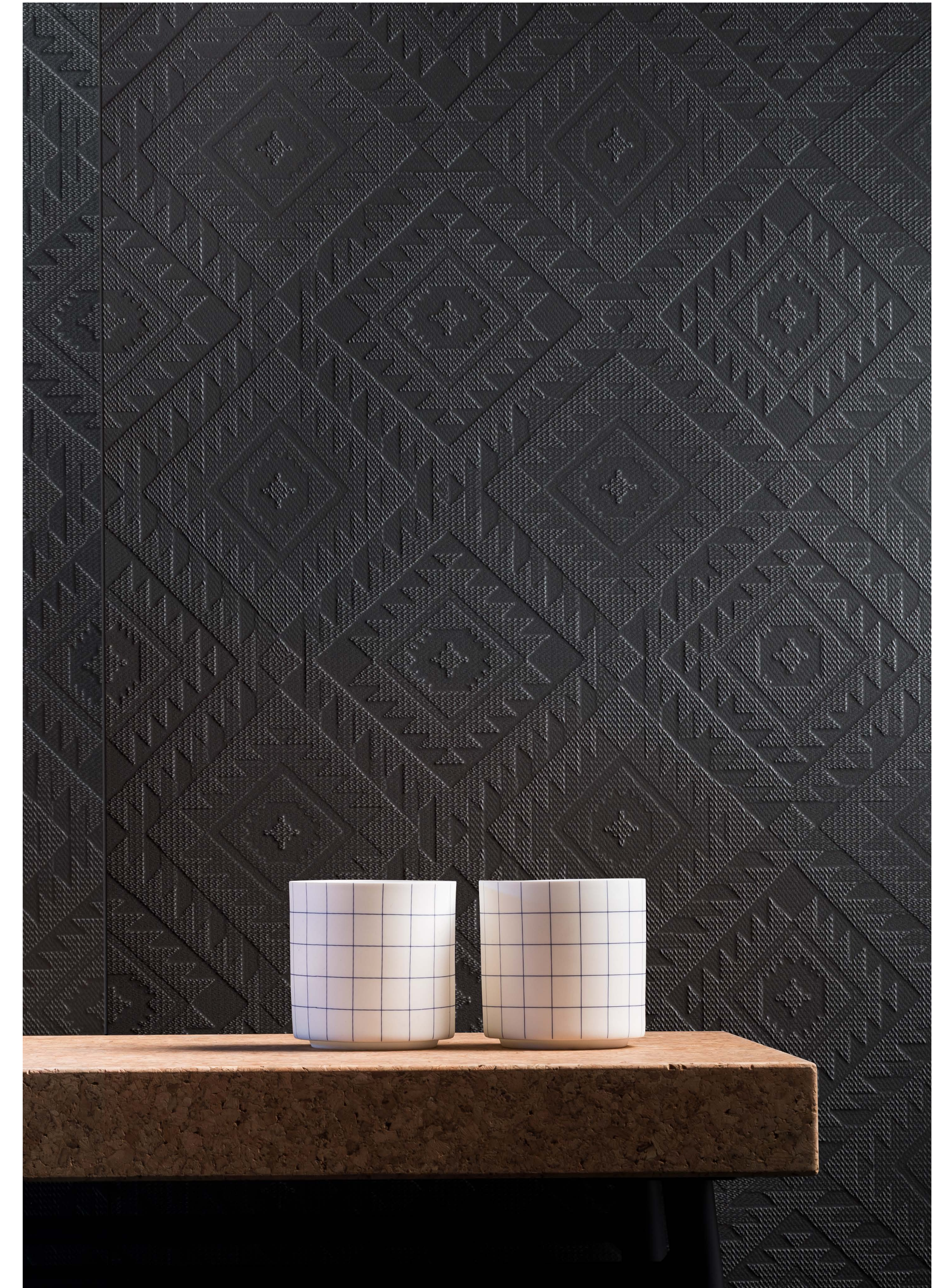
Synonyms & Atonyms



Synonyms & Atonyms



Numi



Synonyms & Atonyms

The trend for glossy accents was first seen on a collection designed by Konstantin Grcic for Mutina last year, Numi, where gloss and matt finishes were combined on a single tile. Like embossed finishes, glossy accents can be a subtle alternative to pattern making if kept to a single colour, allowing reflected light to create the drama.



Numi



Pecchioli



Numi



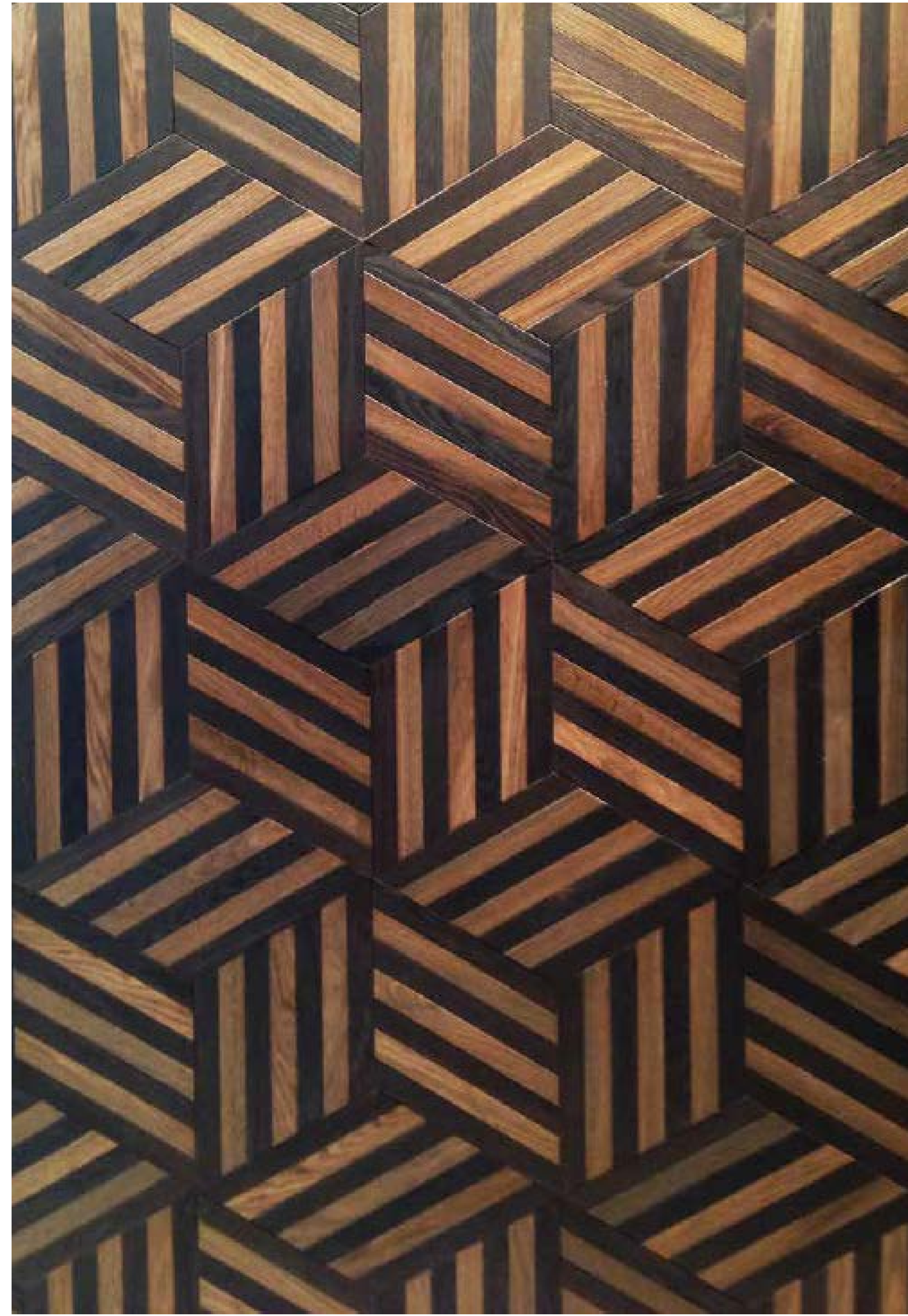
Degre

WOOD 'TILES'

Wood 'tiles' welcome a more playful approach to wood or porcelain wood flooring, and can be described as anything but a standard plank or parquet shape. This trend sees the wood floor industry catching up with the wider trend for pattern, colour, and smaller tile formats. As with all of the trends this year it presents a myriad of opportunities to create a more personal, tailored look.



Bisazza Wood



I Tessutti



Loop



I Tessutti